

COLLIER®

SPORTS

COLLIER®

TURF CARE

The Turf Care
Specialists



2019

Product Guide

V4

Nationwide supplier of quality turf care products and sports equipment. Fully supported by excellent agronomic and technical advice.

Mission Statement: “Collier Turf Care aims to provide excellent customer service to all of its clients, setting the highest benchmark within our industry sector.”

About Us: Collier Turf Care is a privately owned supplier to the sports and amenity market; known for high quality products, expert advice and professional services.
Our customers include golf clubs, bowls & cricket clubs, football & rugby clubs, private schools, local authorities and large private gardens.
Our distribution centre is based in Norfolk and is fully BASIS registered. From this centre we supply and advise to customers throughout the UK.
We deliver using mainly our own fleet of vehicles backed up by specialist contractors and aim to give the very highest level of service to our customers. Our drivers are all trained in the handling and delivery of chemicals as are all our support staff.
Collier Turf Care has achieved the Investors In People accreditation.

Ways to Order: Sales Representative: Order through one of our technically trained Area Technical Sales Representatives - details attached.

Telephone: Call us Monday to Friday 8:45am to 5:00pm on 01328 700600.

Online: Is quick, easy and secure - visit www.collier-turf-care.co.uk

Website: We have an extensive range of products available on our website for purchase. If you are a trade customer we can link your account and discount structure to your online portal where you have access to lots of information such as previous orders, invoices etc. By registering you can also have access to all technical information and downloads like safety data sheets, product labels etc. Our technical area can provide useful information from line marking guides to spreader settings.

Head Office: Drury Square, Beeston, King's Lynn, Norfolk, PE32 2NA

 01328 700600  sales@collier-turf-care.co.uk  www.collier-turf-care.co.uk

Follow us on Social Media:



Index

BEST SELLERS

Bowls
Golf

6

Contractors
Sports Grounds

7

Cricket
Tennis

8

10

| | | | | | |
|----------------------------------|-------------|-----------------------------------|----------------|----------------------------------|-------------------|
| Aerosol (Line Marking) | 68 | Greenmaster Liquids | 32, 36 | Purity Granular Soil Conditioner | 37 |
| All Clear Extra | 61 | Greenvale Organic Pellets | 25 | Purity Liquid Soil Conditioner | 37 |
| Amino-Sorb | 35 | Grow Cover Sheets | 75 | Pyrethum | 52 |
| Applicators | 58, 63 | H2Pro | 55, 57 - 58 | Qualibra | 55 |
| Assist | 61 | Heptasol | 36 | Rabbit Control | 52 |
| Aquatic Products | 60 | Heritage | 43 | Railway Sleepers | 76 |
| Aquatrols Liquids | 27 - 28 | Heritage MaXX | 43 | Rakes | 72 |
| Aqueduct | 54 | Holster XL | 45 - 47 | Ranger | 39 - 40 |
| Attain | 27 | Horse Paddock Mix | 17 | Renovator Pro | 9, 22 |
| Banner MaXX II | 43 | Hose Pipes | 72 | Revolution | 53 - 54 |
| Bark Products | 73 - 74 | Icade | 46 | Rigel G | 6, 7, 37 |
| Biosorb | 37 | Indicator Dyes | 59 | Ritepave | 78 |
| Boutmarker | 61 | Injector Dos | 63 | Roundup ProActive 360 | 49 |
| Briteliner Arrow | 71 | Instrata | 43 | Roundup ProVantage 480 | 49 |
| Bunker Sand Liner | 79 - 80 | Instrata Elite | 42 - 43 | Rubber Crumb | 37 |
| Calibration Kits | 63 | Irons Granular | 36 | Rubber Field Mats | 75 |
| CDA (Nomix) Spraying Lances | 63 | Irons Liquids | 36 | Safety Clothing & Equipment | 65 |
| Chemical Records | 65 | Irrigation Equipment | 72 | Salt Granular | 77 |
| Chemical Storage | 65 | Insecticides | 52 | Salt (De-icing) Liquid | 77 |
| Chikara | 48 | Kaloam | 74 | Seamax Soluble Seaweed | 33 |
| Cleanrun Pro | 22 | Kerb Granules | 48 | Seaturf Vitax | 34 - 35 |
| Clearing (Fairy Ring) | 56 | Knapsack Sprayers | 63 - 64 | Sierrablen Fertiliser | 7, 9, 22 |
| CMW Equipment | 71 | Landscaping Products | 75 - 74 | Sierraform GT | 7, 22 |
| Col-Mark Line Marking | 68 | Line Marking Machines | 70 - 71 | Sierrasol Iron | 36 |
| ColourPro | 59 | Line Marking Materials | 68 | Sleeper Grips | 76 |
| Combi | 26 | Magflo | 26 | Soils | 73 - 74 |
| Composts | 73 - 74 | Magnum Knapsacks | 63 - 64 | Soil Conditioners | 37 - 38 |
| Cricket Wicket Dressings | 74 | Mantrac | 26 | Soil Moisture Meters | 80 |
| De-foamer | 62 | Measuring Tapes | 80 | Soil Samplers | 80 |
| Dew Dispersal | 55 - 56 | Medallion TL | 41, 43 | Soil Thermometers | 80 |
| DiPel DF | 52 | MMC Pro | 39 - 40 | Spotless | 61 |
| Dispatch Sprayable Wetting Agent | 54 | Mogeton | 39 - 40 | Sportsmaster Fertiliser | 9, 22, 33 |
| Dragbrush | 71 | Mole Traps | 52 | Sprayers & Equipment | 6, 8, 10, 63 - 64 |
| Drainage Pipes | 78 | Moskiller Liquids | 39 - 40 | Spray Indicator Dyes | 59 |
| Early Start | 56 | Nematodes | 20 | Spraying Aids | 61 - 62 |
| Ecoplug Max | 49, 51 | Nippon Ant Killer | 52 | Sprinklers | 72 |
| Educational Wall Charts | 5, 58 | Nippon Wasp Nest Destroyer | 52 | Stamina | 61 |
| Effect Liquid Iron | 35 | Nomix Total Weedkillers | 49 | Sulphur 95 | 24 |
| Energise | 36 | Opal Green | 39 - 40 | Supaflush | 68 |
| Enforcer | 46 | Outcast | 6 - 7, 37 | Supaturf | 67, 70 |
| Enmag | 76 | Penetrants | 56 | Syngenta Nozzles | 63 |
| Enviroflow Plank | 78 | pH Buffer | 62 | Tank & Equipment Cleaner | 61 |
| Esteron T | 45 - 46 | Phixer | 61 | Tildenet Grow Sheets | 75 |
| Ev-n-Spred Fertiliser Spreaders | 66 - 67 | Plantex | 75 | Tools | 71 |
| Ferrosol | 36 | Planting Aids | 76 | Top Dressings | 66 - 67 |
| Fertiliser Granular Prestige | 20, 81 | Polybed Drainage | 78 | Trace Element Liquids | 27, 31 - 34 |
| Fertiliser Granular ICL | 22 | Potassium Nitrate | 25 | Tree Compost | 74 |
| Fertiliser Granular Vitax | 23 - 24 | Praxys | 46 | Tree Stakes | 76 |
| Fertiliser Liquid Prestige | 28 - 30 | Preseeder Fertilisers | 22 | Tree Ties | 76 |
| Fertiliser Liquid ICL | 23 - 24 | Prestige Armour | 6 - 7, 36 | Tricoflex Hose | 72 |
| Fertiliser Liquid Vitax | 34 | Prestige Granular Fertilisers | 6 - 10, 21, 81 | Turf | 20 |
| Fertiliser Organic | 21 | Prestige Nugro 6:2:4 Organic | 30 | Turfguard Sprayers | 63 |
| Fertiliser Straights | 25 - 26 | Prestige Super D Thatch | 38 | TXE Line Markers | 70 - 71 |
| Fertiliser Weed & Feed | 22 | Prestige Super Establisher | 38 | Ultraflo Advance | 56 |
| Fertiliser Spreaders | 66 - 67 | Prestige Super Fairway + Iron | 56 | Upstream Black | 60 |
| Fifty90 | 54 | Prestige Super Humic Acid | 38 | Urea | 26 |
| First Aid | 65 | Prestige Super Indicator Dyes | 59 | Vitalnova Range | 32 - 33 |
| Flex-Select Fertiliser Spreaders | 66 - 67 | Prestige Super Liquid Carbon | 38 | Weedball | 63 |
| Foliar Nozzles | 63 | Prestige Super Potassium Silicate | 38 | Weedkillers Aquatic | 60 |
| Fungicides | 41 - 43 | Prestige Super Recovery | 62 | Weedkillers Selective | 46 - 47 |
| Gallup Biograde Amenity | 48 | Prestige Super Replenish + | 56 | Weedkillers Total & Residual | 48 - 51 |
| Germination Aids | 75 | Prestige Super Spraying Aids | 61 | Wetting Agents | 54 - 57 |
| Glyphosate | 48 - 49, 51 | Prestige Super Wetting Agents | 56 | Wetting Agent Pellets | 57 |
| Golf Course Equipment | 71 | Prestige W Soil Conditioner | 6 - 7, 37 | Wheelbarrows | 75 |
| Granulated Lime | 25 | Primo Maxx II | 39 | Wild Flowers | 18 - 19 |
| Grass Seeds | 11 - 19 | Pro Crystal | 60 | Zeolite | 38 |
| Grazers | 52 | ProTurf Fertilisers | 7, 10, 22 | | |
| Grazon Pro | 46 | Propyz | 48 | | |
| Greenmaster Granules | 6, 22 | ProShield | 49 | | |



01328 700600



sales@collier-turf-care.co.uk



www.collier-turf-care.co.uk



Harrod Sport™

The original since 1954

Collier Turf Care are an official Harrod Sport distributor offering the complete Harrod Sport product range, supported by in-depth product knowledge, a superb level of customer service and competitive pricing. Buy with confidence from the UK's leading manufacturer of goals, posts and nets via Collier Turf Care & Collier Sports.

Harrod Sport are the UK's leading sports equipment manufacturer with over 60 years of experience. They manufacture equipment for all levels of practice and they are rightly proud to have had the privilege of supplying 1000's of amateur clubs, schools and Universities across the UK. They are trusted because of their long record of experience in successfully supplying International events including multiple Rugby World Cups, Commonwealth Games and the London 2012 & Rio 2016 Olympic and Paralympic Games.

MAJOR EVENT

CV:

2019

Rugby World Cup, Japan

2018

Vitality Women's World Cup,
Lee Valley London

2017

Hockey World League

2016

Rio Olympic Games 2016
Hockey Champions Trophy,
London, UK

2015

EuroHockey Championships,
London, UK

2014

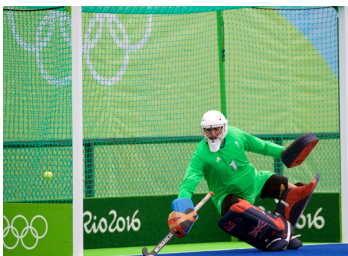
XX Commonwealth Games,
Glasgow, UK

2012

The London 2012 Olympic
Games, UK
The London 2012 Paralympic
Games, UK

2010

XIX Commonwealth Games,
Delhi, India



Setting the standard – leading the field

For all your sporting requirements, contact our dedicated Sports team:

01328 700600
sales@colliersports.co.uk

COLLIER
SPORTS

Collier Turf Care Educational Charts

COLLIER TURF CARE Specialists COLLIER SPORTS

IDENTIFICATION CHART

TURF DISEASES

Microdochium patch (Fusarium)
This is a common turf disease that causes irregular patches of yellowing and browning on the grass blades. It is caused by the fungus Microdochium patch, which is most active in late summer and autumn. Symptoms include yellowing and browning of the grass blades, which may be accompanied by a white or greyish growth on the surface of the grass blades.

Anthracnose
This is a common turf disease that causes irregular patches of yellowing and browning on the grass blades. It is caused by the fungus Colletotrichum, which is most active in late summer and autumn. Symptoms include yellowing and browning of the grass blades, which may be accompanied by a white or greyish growth on the surface of the grass blades.

Summer spot
This is a common turf disease that causes irregular patches of yellowing and browning on the grass blades. It is caused by the fungus Rhizoctonia, which is most active in late summer and autumn. Symptoms include yellowing and browning of the grass blades, which may be accompanied by a white or greyish growth on the surface of the grass blades.

Red thread
This is a common turf disease that causes irregular patches of yellowing and browning on the grass blades. It is caused by the fungus Laetisaria, which is most active in late summer and autumn. Symptoms include yellowing and browning of the grass blades, which may be accompanied by a white or greyish growth on the surface of the grass blades.

Take-all patch
This is a common turf disease that causes irregular patches of yellowing and browning on the grass blades. It is caused by the fungus Gaeumannomyces, which is most active in late summer and autumn. Symptoms include yellowing and browning of the grass blades, which may be accompanied by a white or greyish growth on the surface of the grass blades.

Yellow tuft
This is a common turf disease that causes irregular patches of yellowing and browning on the grass blades. It is caused by the fungus Rhizoctonia, which is most active in late summer and autumn. Symptoms include yellowing and browning of the grass blades, which may be accompanied by a white or greyish growth on the surface of the grass blades.

Fairy ring (Type 1)
This is a common turf disease that causes irregular patches of yellowing and browning on the grass blades. It is caused by the fungus Marasmius, which is most active in late summer and autumn. Symptoms include yellowing and browning of the grass blades, which may be accompanied by a white or greyish growth on the surface of the grass blades.

Fairy ring (Type 2)
This is a common turf disease that causes irregular patches of yellowing and browning on the grass blades. It is caused by the fungus Marasmius, which is most active in late summer and autumn. Symptoms include yellowing and browning of the grass blades, which may be accompanied by a white or greyish growth on the surface of the grass blades.

Fairy ring (Type 3) and Thin in August
This is a common turf disease that causes irregular patches of yellowing and browning on the grass blades. It is caused by the fungus Marasmius, which is most active in late summer and autumn. Symptoms include yellowing and browning of the grass blades, which may be accompanied by a white or greyish growth on the surface of the grass blades.

Fairy ring (Type 4) and Thin in August
This is a common turf disease that causes irregular patches of yellowing and browning on the grass blades. It is caused by the fungus Marasmius, which is most active in late summer and autumn. Symptoms include yellowing and browning of the grass blades, which may be accompanied by a white or greyish growth on the surface of the grass blades.

TURF WEEDS

Creeping bent
This is a common turf weed that causes irregular patches of yellowing and browning on the grass blades. It is caused by the fungus Marasmius, which is most active in late summer and autumn. Symptoms include yellowing and browning of the grass blades, which may be accompanied by a white or greyish growth on the surface of the grass blades.

Yellow tuft
This is a common turf weed that causes irregular patches of yellowing and browning on the grass blades. It is caused by the fungus Rhizoctonia, which is most active in late summer and autumn. Symptoms include yellowing and browning of the grass blades, which may be accompanied by a white or greyish growth on the surface of the grass blades.

White clover
This is a common turf weed that causes irregular patches of yellowing and browning on the grass blades. It is caused by the fungus Rhizoctonia, which is most active in late summer and autumn. Symptoms include yellowing and browning of the grass blades, which may be accompanied by a white or greyish growth on the surface of the grass blades.

Yellow flagging clover
This is a common turf weed that causes irregular patches of yellowing and browning on the grass blades. It is caused by the fungus Rhizoctonia, which is most active in late summer and autumn. Symptoms include yellowing and browning of the grass blades, which may be accompanied by a white or greyish growth on the surface of the grass blades.

Field bindweed
This is a common turf weed that causes irregular patches of yellowing and browning on the grass blades. It is caused by the fungus Rhizoctonia, which is most active in late summer and autumn. Symptoms include yellowing and browning of the grass blades, which may be accompanied by a white or greyish growth on the surface of the grass blades.

Blackberry plantain
This is a common turf weed that causes irregular patches of yellowing and browning on the grass blades. It is caused by the fungus Rhizoctonia, which is most active in late summer and autumn. Symptoms include yellowing and browning of the grass blades, which may be accompanied by a white or greyish growth on the surface of the grass blades.

Star aster
This is a common turf weed that causes irregular patches of yellowing and browning on the grass blades. It is caused by the fungus Rhizoctonia, which is most active in late summer and autumn. Symptoms include yellowing and browning of the grass blades, which may be accompanied by a white or greyish growth on the surface of the grass blades.

St. Mark's Fly
This is a common turf weed that causes irregular patches of yellowing and browning on the grass blades. It is caused by the fungus Rhizoctonia, which is most active in late summer and autumn. Symptoms include yellowing and browning of the grass blades, which may be accompanied by a white or greyish growth on the surface of the grass blades.

Get our Grass Guys Weekly Disease Blog delivered to your inbox every Monday! Email sales@collier-turf-care.co.uk or speak to your Local Area Technical Sales Representative.

For professional advice and product recommendations on turf disease, weeds, pests and grass seed, please contact the Grass Guys.

Follow us on social media

01328 700600 sales@collier-turf-care.co.uk

Identification Chart

COLLIER TURF CARE Specialists COLLIER SPORTS

NUTRITIONAL CHART

Nutrients

Nitrogen
Nitrogen is a key nutrient for grass growth. It is essential for the production of chlorophyll, which is needed for photosynthesis. Nitrogen deficiency causes yellowing of the grass blades and stunted growth.

Phosphorus
Phosphorus is a key nutrient for grass growth. It is essential for the production of energy and for the development of roots. Phosphorus deficiency causes stunted growth and a reddish-purple coloration of the grass blades.

Potassium
Potassium is a key nutrient for grass growth. It is essential for the production of enzymes and for the regulation of water balance. Potassium deficiency causes stunted growth and a yellowing of the grass blades.

Calcium
Calcium is a key nutrient for grass growth. It is essential for the production of cell walls and for the regulation of water balance. Calcium deficiency causes stunted growth and a yellowing of the grass blades.

Magnesium
Magnesium is a key nutrient for grass growth. It is essential for the production of chlorophyll and for the regulation of water balance. Magnesium deficiency causes stunted growth and a yellowing of the grass blades.

Sulfur
Sulfur is a key nutrient for grass growth. It is essential for the production of proteins and for the regulation of water balance. Sulfur deficiency causes stunted growth and a yellowing of the grass blades.

Zinc
Zinc is a key nutrient for grass growth. It is essential for the production of enzymes and for the regulation of water balance. Zinc deficiency causes stunted growth and a yellowing of the grass blades.

Copper
Copper is a key nutrient for grass growth. It is essential for the production of enzymes and for the regulation of water balance. Copper deficiency causes stunted growth and a yellowing of the grass blades.

Manganese
Manganese is a key nutrient for grass growth. It is essential for the production of enzymes and for the regulation of water balance. Manganese deficiency causes stunted growth and a yellowing of the grass blades.

Boron
Boron is a key nutrient for grass growth. It is essential for the production of enzymes and for the regulation of water balance. Boron deficiency causes stunted growth and a yellowing of the grass blades.

Iron
Iron is a key nutrient for grass growth. It is essential for the production of enzymes and for the regulation of water balance. Iron deficiency causes stunted growth and a yellowing of the grass blades.

Silica
Silica is a key nutrient for grass growth. It is essential for the production of enzymes and for the regulation of water balance. Silica deficiency causes stunted growth and a yellowing of the grass blades.

Soil Texture Chart

The chart shows the relative proportions of sand, silt, and clay in different soil types. Sandy loam has the highest sand content, while silty loam has the highest silt content.

Nitrogen Cycle

The diagram illustrates the cycle of nitrogen in the soil. It shows how nitrogen is taken up by plants, how it is converted to nitrate, and how it is eventually lost to the atmosphere or returned to the soil.

Grass Nutrient Deficiencies

| Symptoms: | N | P | K | Ca | Mg | S | Fe | Mn | Cu | Zn | Mo | B |
|------------------------|---|---|---|----|----|---|----|----|----|----|----|---|
| New leaf yellowing | ✓ | | | | | | | | | | | |
| Old leaf yellowing | | ✓ | | | | | | | | | | |
| Intermittent yellowing | | | ✓ | | | | | | | | | |
| Leaves curling | | | | ✓ | | | | | | | | |
| Old leaf brown tips | | | | | ✓ | | | | | | | |
| Stunted growth | | | | | | ✓ | | | | | | |
| Purple leaf | | | | | | | ✓ | | | | | |
| Mottled leaf | | | | | | | | ✓ | | | | |
| Weak growth | | | | | | | | | ✓ | | | |
| Clumping tips | | | | | | | | | | ✓ | | |
| Stiffening | | | | | | | | | | | ✓ | |
| Plaggy leaf | | | | | | | | | | | | ✓ |
| Stunted roots | | | | | | | | | | | | ✓ |

Spreader Settings

| Product Name | Product Size | Units | Spreader Size | Rate (kg/ha) | Rate (lb/acre) |
|----------------|-----------------|-------|---------------|--------------|----------------|
| Amphibol 1000 | 2.0ha - 3.0ha | 1000 | 1000 | 1000 | 1000 |
| Amphibol 1500 | 3.0ha - 4.0ha | 1500 | 1500 | 1500 | 1500 |
| Amphibol 2000 | 4.0ha - 5.0ha | 2000 | 2000 | 2000 | 2000 |
| Amphibol 2500 | 5.0ha - 6.0ha | 2500 | 2500 | 2500 | 2500 |
| Amphibol 3000 | 6.0ha - 7.0ha | 3000 | 3000 | 3000 | 3000 |
| Amphibol 3500 | 7.0ha - 8.0ha | 3500 | 3500 | 3500 | 3500 |
| Amphibol 4000 | 8.0ha - 9.0ha | 4000 | 4000 | 4000 | 4000 |
| Amphibol 4500 | 9.0ha - 10.0ha | 4500 | 4500 | 4500 | 4500 |
| Amphibol 5000 | 10.0ha - 11.0ha | 5000 | 5000 | 5000 | 5000 |
| Amphibol 5500 | 11.0ha - 12.0ha | 5500 | 5500 | 5500 | 5500 |
| Amphibol 6000 | 12.0ha - 13.0ha | 6000 | 6000 | 6000 | 6000 |
| Amphibol 6500 | 13.0ha - 14.0ha | 6500 | 6500 | 6500 | 6500 |
| Amphibol 7000 | 14.0ha - 15.0ha | 7000 | 7000 | 7000 | 7000 |
| Amphibol 7500 | 15.0ha - 16.0ha | 7500 | 7500 | 7500 | 7500 |
| Amphibol 8000 | 16.0ha - 17.0ha | 8000 | 8000 | 8000 | 8000 |
| Amphibol 8500 | 17.0ha - 18.0ha | 8500 | 8500 | 8500 | 8500 |
| Amphibol 9000 | 18.0ha - 19.0ha | 9000 | 9000 | 9000 | 9000 |
| Amphibol 9500 | 19.0ha - 20.0ha | 9500 | 9500 | 9500 | 9500 |
| Amphibol 10000 | 20.0ha - 21.0ha | 10000 | 10000 | 10000 | 10000 |

Effects of pH on Nutrient Availability

The graph shows that the availability of most nutrients is highest at a pH of 6.5 to 7.5. Nutrients like iron and manganese are more available at lower pH, while phosphorus and molybdenum are more available at higher pH.

For professional advice on plant nutrition or for soil, water and leaf tissue testing and bespoke nutritional programmes, please contact our FACTS qualified Grass Guys.

Get our Grass Guys Weekly Disease Blog delivered to your inbox every Monday! Email sales@collier-turf-care.co.uk or speak to your Local Area Technical Sales Representative.

Follow us on social media

01328 700600 sales@collier-turf-care.co.uk www.collier-turf-care.co.uk

£10 ex. VAT each or FREE to Account Customers

Nutritional Chart

Contact us for your copy of our informative educational charts, ideal for maintenance facilities and educating students!

Bowls Best Sellers - Autumn

Fertilisers

| | Pack Size | Analysis | Application Rate | Pack Coverage |
|--------------------------------|-----------|----------------------------------|------------------|----------------------|
| Prestige FT K Booster | 25 kg | 5:0:28 + 2% Mg | 35 g/sq.m | 714 sq.m |
| Prestige FT Organic All Season | 25 kg | 5:3:8 | 35 - 70 g/sq.m | 357 - 714 sq.m |
| Prestige FT All Season | 25 kg | 6:6:12 + 2% Fe + 2% Mg + seaweed | 35 g/sq.m | 714 sq.m |
| Prestige FT Initiate | 25 kg | 4:0:8 + 4% Fe + 2% Mg | 35 g/sq.m | 714 sq.m |
| Prestige Armour | 25 kg | 9% Fe + 4.5% Mg + Seaweed | 35 g/sq.m | 714 sq.m |
| Prestige Nugro Organic | 10 ltr | 6:2:4 | 5 - 10 ltr/ha. | 10,000 - 20,000 sq.m |
| Greenmaster Autumn | 25 kg | 6:5:10 + 6% Fe | 35 g/sq.m | 714 sq.m |
| Greenmaster Autumn Mg | 25 kg | 6:5:11 + 3% MgO + 0.5% Fe | 35 g/sq.m | 714 sq.m |
| Vitax Enhance R A/W | 20 kg | 5:2:15 + 2% MgO + TE | 15 - 25 g/sq.m | 800 - 1,333 sq.m |

Grass Seed

| | Pack Size | Sowing Rate | Sowing Depth | Oversowing Rate |
|-------------------------------|---------------|----------------|--------------|-----------------|
| Barenbrug Sport Classic 80:20 | 5 kg or 20 kg | 20 - 30 g/sq.m | Rootzone | 10 - 20 g/sq.m |
| Barenbrug Sport Platinum FT | 5 kg or 20 kg | 25 - 35 g/sq.m | 8 - 12 mm | 15 - 25 g/sq.m |
| Barenbrug Sport Ultrafine | 20 kg | 25 - 50 g/sq.m | 10 - 15 mm | 20 - 30g/sq.m |
| Barenbrug Sport Extreme | 5 kg or 20 kg | 25 - 50 g/sq.m | 10 - 15 mm | 20 - 30g/sq.m |
| Barenbrug Essential E5 | 20 kg | 25 - 35 g/sq.m | | 15 - 25 g/sq.m |

Fungicides

(Use with Prestige Super Recovery)

| | Pack Size | Active Ingredient/s | Application Rate | Pack Coverage |
|---------------------------|---------------|--------------------------------|------------------|---------------------|
| Heritage WSG | 100 g - 500 g | Azoxystrobin | 0.5 kg/ha. | 2,000 - 10,000 sq.m |
| Medallion TL | 1 - 3 ltr | Fludioxonil | 3 ltr/ha. | 3,333 - 10,000 sq.m |
| Instrata Elite | 1 - 3 ltr | Difenoconazole + Fludioxonil | 3 ltr/ha. | 3,333 - 10,000 sq.m |
| NEW Clayton Bestow | 500 ml | Tebuconazole + Trifloxystrobin | 1 ltr/ha. | 5,000 sq.m |

Soil Conditioners

| | Pack Size | Application Rate | Pack Coverage |
|-----------------------------|-----------|------------------|--------------------|
| Heptasol | 12.5 kg | 25 kg/ha. | 5,000 sq.m |
| Rigel G | 1 ltr | 2 - 3 ltr/ha. | 3,333 - 5,000 sq.m |
| Prestige W Soil Conditioner | 20 kg | 30 g/sq.m | 666 sq.m |
| Outcast | 10 ltr | 20 ltr/ha. | 5,000 sq.m |

Wetting Agents

| | Pack Size | Application Rate | Pack Coverage |
|-------------------------------|-----------|------------------|--------------------|
| Prestige Super Replenish Plus | 10 ltr | 20 ltr/ha. | 5,000 sq.m |
| Prestige Super Infiltrate | 10 ltr | 10 ltr/ha. | 10,000 sq.m |
| Aquatrols Revolution | 10 ltr | 19 ltr/ha. | 5,263 sq.m |
| ICL H2Pro Tri-Smart | 5 ltr | 10 - 25 ltr/ha. | 2,000 - 5,000 sq.m |

Top Dressing

| | Pack Size |
|----------|-------------------|
| Tru-Turf | 25 kg or bulk bag |

Biological/Bio-Stimulants

| | Pack Size | Application Rate | Pack Coverage |
|---------------------------|-----------|------------------|---------------|
| Amino-Sorb R | 5 ltr | 15 ltr/ha. | 3,333 sq.m |
| Prestige Super Humic Acid | 5 ltr | 10 ltr/ha. | 5,000 sq.m |

Spreaders/Sprayers

Ev-n-Spred 2150
TurfGuard Pro Plus



Golf Best Sellers - Autumn

Fertilisers

| | Pack Size | Analysis | Application Rate | Pack Coverage |
|--------------------------------|-----------|----------|------------------|--------------------|
| Prestige Fine Turf All Season | 25 kg | 6:6:12 | 35 g/sq.m | 714 sq.m |
| Prestige Stress Less | 25 kg | 13:0:26 | 25-35 g/sq.m | 1,000 sq.m |
| Prestige K Booster | 25 kg | 5:0:28 | 35 g/sq.m | 714 sq.m |
| Prestige Fine Turf Initiate | 25 kg | 4:0:8 | 35 g/sq.m | 714 sq.m |
| Vitax Enhance R Autumn/Winter | 20 kg | 5:2:15 | 15-25 g/sq.m | 800-1,333 sq.m |
| Sierrablen Plus Stress Control | 25 kg | 15:5:22 | 25-40 g/sq.m | 625-1,000 sq.m |
| Greenmaster Autumn | 25 kg | 6:5:10 | 35 g/sq.m | 714 sq.m |
| Greenmaster Autumn Mg | 25 kg | 6:5:11 | 35 g/sq.m | 714 sq.m |
| Sierraform K-Step | 25 kg | 6:0:27 | 15-25 g/sq.m | 800-1,333 sq.m |
| Pro-Turf (2-3 months) | 25 kg | 12:5:20 | 35 g/sq.m | 714 sq.m |
| Prestige Nugro Organic Liquid | 10 ltr | 6:4:12 | 5-10 ltr/ha | 10,000-20,000 sq.m |
| Prestige NK Autumn/Winter | 20 ltr | 5:0:12 | 20-40 ltr/ha | 1,666-10,000 sq.m |

Grass Seed

| | Pack Size | Sowing Rate | Sowing Depth | Oversowing Rate |
|--------------------------|-----------|--------------|--------------|-----------------|
| Barenbrug Sport RPR Golf | 20 kg | 25-50 g sq.m | 10-15 mm | 20-30 g/sq.m |
| Barenbrug Sport SOS | 20 kg | 20-40 g sq.m | 4-8 mm | 20-40 g/sq.m |

Fungicides

| | Pack Size | Application Rate | Pack Coverage | (Use with Prestige Super Recovery) |
|---------------------------|------------|------------------|---------------|------------------------------------|
| Instrata Elite | 3 ltr | 3 ltr/ha | 10,000 sq.m | |
| Medallion TL | 1 or 3 ltr | 3 ltr/ha | 3,333 sq.m | |
| NEW Clayton Bestow | 500 ml | 1 ltr/ha | 5,000 sq.m | |

Dew Dispersal

| | Pack Size | Application Rate | Pack Coverage |
|-------------------|-----------|------------------|---------------|
| Vitax Early Start | 2 ltr | 2 ltr/ha | 10,000 sq.m |
| ICL Dewsmart | 10 ltr | 10 ltr/a | 10,000 sq.m |

Soil Conditioners

| | Pack Size | Application Rate | Pack Coverage |
|-----------------------------|-----------|------------------|---------------|
| Prestige W Soil Conditioner | 20 kg | 30 g/sq.m | 666 sq.m |
| Rigel G | 1 ltr | 1-2 ltr/ha | 5,000 sq.m |
| Outcast | 10 ltr | 20 ltr/ha | Various |

Tough Turf Package

| | Pack Size | Application Rate | Pack Coverage | |
|------------------------|-----------|------------------|---------------|-----------------|
| Aquatrols Calcium Plus | 10 ltr | 10 ltr/ha* | 10,000 sq.m | * In a tank mix |
| Aquatrols Ferrosol | 10 ltr | 10 ltr/ha* | 10,000 sq.m | |
| Aquatrols Premium K | 10 ltr | 10 ltr/ha* | 10,000 sq.m | |

Wetting Agents

| | Pack Size | Application Rate | Pack Coverage |
|---------------------------|-----------|------------------|---------------|
| Prestige Super Infiltrate | 10 ltr | 10 ltr/ha | 10,000 sq.m |
| ICL Flowsmart | 10 ltr | 10 ltr/ha | 10,000 sq.m |

Iron Hardeners

| | Pack Size | Application Rate | Pack Coverage |
|-------------------|-----------|------------------|---------------|
| Prestige Armour | 25 kg | 30-35 g/sq.m | 714-833 sq.m |
| Prestige Heptasol | 12.5 kg | 25 kg/ha | 5,000 sq.m |

Spraying Aids

| | Pack Size | Application Rate | Pack Coverage |
|-------------------------------|-------------|--------------------------|---------------|
| Prestige Super Recovery | 5 ltr | 10 ltr/ha | 5,000 sq.m |
| Prestige Super Blue Spray Dye | 1 or 10 ltr | 200-500 ml in 200 ltr | Various |

Contractors Best Sellers - Summer

Selective Weedkillers

| | Pack Size | Application Rate | Pack Coverage |
|------------|-----------|------------------|----------------------|
| Holster XL | 2 ltr | 2 ltr/ha | 10,000 sq.m |
| Grazon Pro | 1 ltr | Various | Various |
| Praxys | 2 ltr | 1 - 2 ltr/ha | 10,000 - 20,000 sq.m |
| Enforcer | 5 ltr | 7.5 ltr/ha | 6,666 sq.m |
| Icade | 1 ltr | Various | Various |

Grass Seed

| | Pack Size | Sowing Rate | Sowing Depth | Oversowing Rate |
|---|-----------|--------------|--------------|-----------------|
| Barenbrug Sport Extreme | 20 kg | 25 - 35 sq.m | 10 - 15 mm | 20 - 30 g/sq.m |
| Barenbrug Essential E1 Lawn & Landscape | 20 kg | 25 - 35 sq.m | | |
| Barenbrug Essential E7 Sports Ryegrass | 20 kg | 30 - 50 sq.m | | |
| Barenbrug Essential E8 Shaded Areas | 20 kg | 25 - 35 sq.m | | |

Total Weedkillers

| | Pack Size | Application Rate | Pack Coverage |
|-------------------------------|--------------|------------------|--------------------|
| Roundup Pro Active | 5 ltr | Various | Various |
| Gallup Biograde Amenity 360 g | 5 ltr | Various | Various |
| Belchim Chikara | 50 g & 200 g | 150 g/ha | 3,333- 13,333 sq.m |
| Clayton APT | 50 g & 200 g | 150 g/ha | 3,333- 13,333 sq.m |
| EcoPlug Max | pk/100 | Various | Various |

Fertiliser

| | Pack Size | Analysis | Application Rate | Pack Coverage |
|--------------------------------|-----------|----------|------------------|----------------------|
| Prestige Sportsfield Longevity | 25 kg | 12:2:10 | 35 - 50 g/sq.m | 500 - 714 sq.m |
| Prestige Organic TE S/S | 25 kg | 12:6:6 | 35 - 50 g/sq.m | 500 - 714 sq.m |
| Sportsmaster Preseeder | 25 kg | 8:12:8 | 35 - 50 g/sq.m | 500 - 714 sq.m |
| Prestige Growmore Granular | 25 kg | 7:7:7 | 70 - 130 g/sq.m | 192 - 537 sq.m |
| Prestige NPK Spring & Summer | 20 ltr | 12:4:8 | 45 - 120 g/sq.m | 1,666 - 5,000 sq.m |
| Prestige NK Spring & Summer | 20 ltr | 15:0:12 | 40 - 120 g/sq.m | 1,666 - 5,000 sq.m |
| Prestige Nugro Organic | 10 ltr | 6:2:4 | 5 - 10 g/sq.m | 10,000 - 20,000 sq.m |

Miscellaneous

| | Pack Size | Application Rate | Pack Coverage |
|-------------------------------|----------------|---|---------------|
| ICL Ranger | 5 ltr | 1 ltr/100 sq.m | 500 sq.m |
| Brinton's MMC Pro | 5 ltr | 1:4/1:9 | 75 - 350 sq.m |
| Prestige Super Blue Spray Dye | 1 ltr & 10 ltr | 200 - 500 ml in 200 ltr spray solution | |

Applicators

Turfguard Pro Plus Professional Sprayer
ICL SR2000 Spreader
Magnum 1000 Knapsack Sprayer
Magnum 2000 Knapsack Sprayer
Weedball

Sports Ground Best Sellers - Summer

Fertilisers

| | Pack Size | Analysis | Application Rate | Pack Coverage |
|--------------------------------|-----------|----------|------------------|------------------|
| Prestige Sportsfield Longevity | 25 kg | 12:2:10 | 35 g/sq.m | 714 sq.m |
| Prestige Organic TE S/S | 25 kg | 12:6:6 | 25 - 35 g/sq.m | 714 - 1,000 sq.m |
| Sierrablen range | 25 kg | | Various | Various |
| Pro-Turf range | 25 kg | | Various | Various |
| Prestige Super Fairway + Iron | 200 ltr | 10:0:0 | 20 ltr/ha | 100,000 sq.m |
| Vitax Enhance R Outfield | 20 kg | 15:2:6 | 25 g/sq.m | 800 sq.m |

Grass Seed

| | Pack Size | Sowing Rate | Sowing Depth | Oversowing Rate |
|-----------------------------|-----------|----------------|--------------|-----------------|
| Barenbrug Sport Seven Sport | 20 kg | 30 - 50 g/sq.m | 10 - 15 mm | 15 - 30 g/sq.m |
| Barenbrug Sport Extreme | 20 kg | 25 - 25 g/sq.m | 10 - 15 mm | 20 - 30 g/sq.m |
| Barenbrug Sport RPR Stadium | 20 kg | 30 - 50 g/sq.m | 12 - 15 mm | 15 - 30 g/sq.m |
| Barenbrug Sport Multi Sport | 20 kg | 30 - 50 g/sq.m | 10 - 15 mm | 15 - 30 g/sq.m |
| Barenbrug Sport Elite Sport | 20 kg | 30 - 50 g/sq.m | 10 - 15 mm | 15 - 30 g/sq.m |

Moss Control

| | Pack Size | Application Rate | Pack Coverage |
|---------|-----------|-------------------------|---------------|
| MMC Pro | 5 ltr | 1:4/1:9 | Various |
| Ranger | 5 ltr | 1 ltr/100m ² | 500 sq.m |

Weed Killer

| | Pack Size | Application Rate | Pack Coverage |
|------------------------------|-----------|------------------|---------------------|
| Holster XL | 2 ltr | 2 ltr/ha | 10,000 sq.m |
| Gallup Biograde Amenity 360g | 5 ltr | Various | Various |
| Clayton Apt | 50/200 g | 150g/ha | 3,333 - 13,333 sq.m |
| ICL Praxys | 2 ltr | Various | 10,000 sq.m |

Wetting Agents

| | Pack Size | Application Rate | Pack Coverage |
|--------------------------------------|-----------|------------------|---------------|
| Prestige Super Fairway Wetting Agent | 10 ltr | 20 ltr/ha | 5,000 sq.m |
| Aquatrols Dispatch Sprayable | 10 ltr | 2 ltr/ha | 50,000 sq.m |

Applicators

Turfguard Pro Plus Professional Sprayer
SR2000 Spreader
Magnum 1000 Knapsack Sprayer
Magnum 2000 Knapsack Sprayer
Weedball

Line markers and marking paint also available.



Cricket and Tennis Best Sellers - Autumn

Cricket Loams

| | Pack Size | % Clay | Sterilisation |
|-------------------|-----------|--------|---------------|
| Ongar Loam | 25 kg | 31% | Unsterilised |
| County No.1 | 25 kg | 32% | Sterilised |
| Club No.2 | 25 kg | 30% | Sterilised |
| Super Surrey Loam | 25 kg | 28% | Unsterilised |
| Ongar Loam Plus | 25 kg | 31% | Unsterilised |
| Kaloam | 25 kg | 31% | Unsterilised |

Tennis Loams

| | Pack Size | % Clay | Sterilisation |
|----------------|-----------|--------|---------------|
| Kettering Loam | 25 kg | 24% | Sterilised |

Grass Seed

| | Pack Size | Sowing Rate | Sowing Depth | Oversowing Rate |
|---------------------------|--------------|----------------|--------------|-----------------|
| Barenbrug Sport Extreme | 5 kg & 20 kg | 25 - 50 g/sq.m | 10 - 15 mm | 20 - 30 g/sq.m |
| Barenbrug Sport Medal | 20 kg | 25 - 35 g/sq.m | 8 - 12 mm | 15 - 25 g/sq.m |
| Barenbrug Sport Ultrafine | 20 kg | 25 - 50 g/sq.m | 10 - 15 mm | 20 - 30 g/sq.m |

Fertiliser

| | Pack Size | Analysis | Application Rate | Pack Coverage |
|-------------------------------|-----------|----------------------------|------------------|------------------|
| Prestige Fine Turf All Season | 25 kg | 6:6:12 + 2% Fe, 2% Mg + SW | 35 g/sq.m | 714 sq.m |
| Prestige Fine Turf Initiate | 25 kg | 4:0:8 4% Fe + 2% Mg | 35 g/sq.m | 714 sq.m |
| Prestige Fine Turf K Booster | 25 kg | 5:0:28 + 2% Mg | 35 g/sq.m | 714 sq.m |
| Prestige Stress Less | 25 kg | 13:0:26 + 1% Fe | 25 - 35 g/sq.m | 714 - 1,000 sq.m |
| Greenmaster Autumn | 25 kg | 6:5:10 + 6% Fe | 35 g/sq.m | 714 sq.m |

Soil Conditioners

| | Pack Size | Application Rate | Pack Coverage |
|-----------------------------|-----------|------------------|--------------------|
| Heptasol | 12.5 kg | 25 kg/ha. | 5,000 sq.m |
| Rigel G | 1 ltr | 2 - 3 ltr/ha. | 3,333 - 5,000 sq.m |
| Prestige W Soil Conditioner | 20 kg | 30 g/sq.m | 666 sq.m |
| Outcast | 10 ltr | 20 ltr/ha. | 5,000 sq.m |

Line Marking Paint

| | Pack Size | Colour/s | Application Method |
|-------------------|-----------|--------------------------|--------------------|
| Col-Mark Premium | 12.5 ltr | White | Spray Machine |
| Col-Mark Sport | 12.5 ltr | White | Spray Machine |
| Col-Mark Transfer | 12.5 ltr | White | Transfer Machine |
| Prestige Aerosols | 750 ml | Red, Blue, White, Yellow | Aerosol Applicator |

Applicators

Spreaders

Ev-n-Spred 2050P
SR2000 Spreader

Sprayers

Turfguard Pro Plus Professional Sprayer
Magnum 1000 Knapsack Sprayer
Magnum 2000 Knapsack Sprayer

Line Markers

Topline TXE 353 Line Marker
Topline TXE 606 Pro Line Marker
Topline TXE 353 Pro Line Marker
Topline TXE 606 Line Marker
Topline TFS25 Line Marker
WM1 Waveney Line Marker
Blue Diamond 2 Wheeled Applicator
Briteliner Arrow

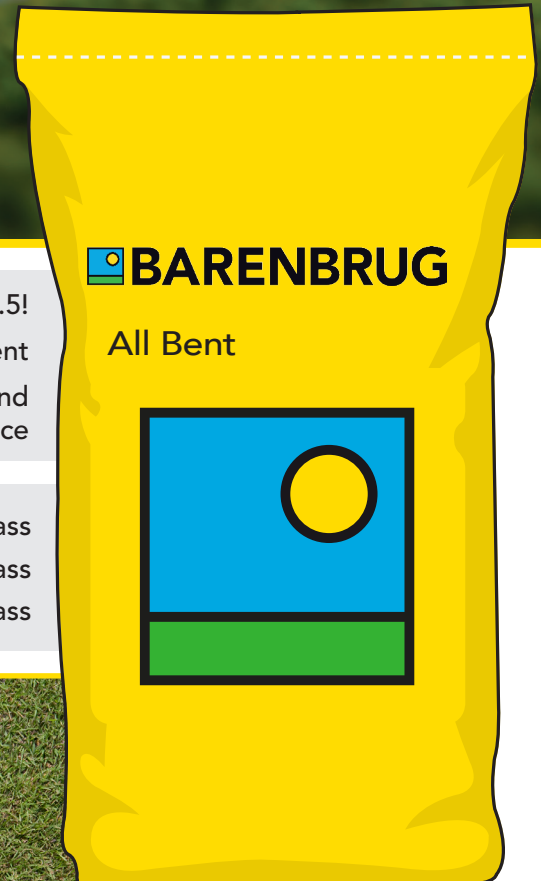
Also available

Nets | Cages | Ropes | Practice Stumps | Posts | Other accessories

For pests such as worms, leatherjackets, chafer grubs, ring our technical
'Grass Guys' on 01328 700600 for up to date advice



All Bent 100% browntop bentgrass



 **BARENBRUG**

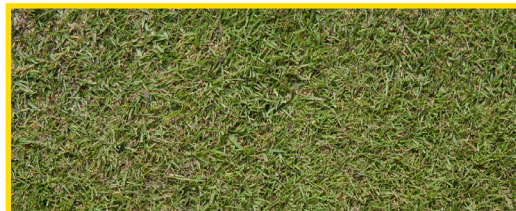
All Bent

Charles #1 by 0.5!

BarKing #5 bent

BarKing winter colour and
Microdochium (Fusarium) tolerance

60% **BARKING** browntop bentgrass
30% **HERIOT** browntop bentgrass
10% **CHARLES** browntop bentgrass



SALTEX

SPORTS AMENITIES LANDSCAPING TRADE EXHIBITION

OCTOBER 30-31 2019
NEC BIRMINGHAM

VISIT US ON STAND
G055

 **BARENBRUG**

Barenbrug Sport Grass Seed

Fescue

Golf

Outstanding blend of four red fescue cultivars for the overseeding and construction of free-draining fine turf.

| | | |
|-----|-----------|-----------------------------|
| 30% | Viktorka | slender creeping red fescue |
| 30% | Barlineus | chewings red fescue |
| 20% | Barcrown | slender creeping red fescue |
| 20% | Bodega | chewings red fescue |

Sowing rate: 25 - 35 g per sq.m Sowing depth: 8 - 12 mm

Over sowing rate: 15 - 25 g Min. cutting height: 4 mm

20 kg

Fairway

Golf

Excellent blend of five fine fescue species, designed for overseeding, divoting and constructing free-draining turf areas on the golf course.

| | | |
|------|----------|-----------------------------|
| 35% | Barrisse | strong creeping red fescue |
| 30% | Viktorka | slender creeping red fescue |
| 20% | Musica | chewings red fescue |
| 7.5% | Hardtop | hard fescue |
| 7.5% | Beacon | hard fescue |

Sowing rate: 20 - 35 g per sq.m Sowing depth: 8 - 12 mm

Over sowing rate: 15 - 25 g Min. cutting height: 7 mm

20 kg

Shoreline

Golf

Designed for germination and survival in salt for courses exposed to saline conditions.

| | | |
|-----|----------|-----------------------------|
| 40% | Barmalia | slender creeping red fescue |
| 30% | Viktorka | slender creeping red fescue |
| 30% | Barpearl | slender creeping red fescue |

Sowing rate: 35 - 45 g per sq.m Sowing depth: 8 - 12 mm

Over sowing rate: 20 - 30 g Min. cutting height: 4 mm

20 kg

All Bent

Golf

100% browntop bentgrass blend, designed for overseeding and species exchange in golf and bowling greens.

| | | |
|-----|---------|---------------|
| 50% | Barking | browntop bent |
| 30% | Heriot | browntop bent |
| 20% | Charles | browntop bent |

Sowing rate: 8 - 10 g per sq.m Sowing depth: Rootzone contact

Over sowing rate: 4 - 6 g Min. cutting height: 3 mm

Available in 10 kg & 20 kg

Classic 80:20

Golf

Traditional 80:20 fescue:bentgrass mixture - the number one choice for golf green construction

| | | |
|-----|-----------|-----------------------------|
| 20% | Viktorka | slender creeping red fescue |
| 20% | Barcrown | slender creeping red fescue |
| 20% | Barlineus | chewings red fescue |
| 20% | Bodega | chewings red fescue |
| 20% | Barking | browntop bentgrass |

Sowing rate: 20 - 30 g per sq.m Sowing depth: Rootzone contact

Over sowing rate: 10 - 20 g Min. cutting height: 4 mm

Available in 5 kg & 20 kg



Fescue



Fairway



Shoreline



All Bent



Yellow Jacket Water Manager

Game-changer for turf managers



Yellow Jacket Fescue

Golf

Outstanding blend of four red fescue cultivars for the overseeding and construction of free-draining fine turf.

| | | |
|-----|-----------|-----------------------------|
| 30% | Viktorka | slender creeping red fescue |
| 30% | Barlineus | chewings red fescue |
| 20% | Barcrown | slender creeping red fescue |
| 20% | Bodega | chewings red fescue |

Sowing rate: 25 - 35 g per sq.m

Sowing depth: 8 - 12 mm

Over sowing rate: 15 - 25 g

Min. cutting height: 4 mm

10 kg

Yellow Jacket Fairway

Golf

Excellent blend of five fine fescue species, designed for overseeding, divoting and constructing free-draining turf areas on the golf course.

| | | |
|------|----------|-----------------------------|
| 35% | Barrisse | strong creeping red fescue |
| 30% | Viktorka | slender creeping red fescue |
| 20% | Musica | chewings red fescue |
| 7.5% | Hardtop | hard fescue |
| 7.5% | Beacon | hard fescue |

Sowing rate: 20 - 35 g per sq.m

Sowing depth: 8 - 12 mm

Over sowing rate: 15 - 25 g

Min. cutting height: 7 mm

10 kg

Temporary Mixtures for 2019

Please note the following changes to the Sport Range, which will come into effect when current stocks diminish.

Fescue Eco

Golf

60% slender creeping red fescue, 40% chewings red fescue
A temporary mixture for 2019.

| | | |
|-----|----------|-----------------------------|
| 30% | Pinafore | slender creeping red fescue |
| 30% | Nicole | slender creeping red fescue |
| 20% | Casanova | chewings red fescue |
| 20% | Melitta | chewings red fescue |

Sowing rate: 25 - 35 g per sq.m

Sowing depth: 8 - 12 mm

Over sowing rate: 15 - 25 g

Min. cutting height: 4 mm

20 kg

Fairway Eco

Golf

A cost-effective alternative for fescue fairway overseeding and divoting.

| | | |
|------|----------|-----------------------------|
| 35% | Barrisse | strong creeping red fescue |
| 30% | Viktorka | slender creeping red fescue |
| 20% | Musica | chewings red fescue |
| 7.5% | Hardtop | hard fescue |
| 7.5% | Beacon | hard fescue |

Sowing rate: 20 - 35 g per sq.m

Sowing depth: 8 - 12 mm

Over sowing rate: 15 - 25 g

Min. cutting height: 7 mm

20 kg

BarKing

Golf

100% BarKing

browntop bentgrass

Sowing rate: 35 - 45 g per sq.m Sowing depth: 8 - 12 mm

Over sowing rate: 20 - 30 g Min. cutting height: 4 mm

20 kg

Available from

COLLIER
TURF CARE

BARENBRUG

Barenbrug Sport Grass Seed

Platinum Fine Turf

Golf

A mixture of perennial ryegrass and red fescue, designed for the construction or overseeding of fine turf with moderate wear pressure.

| | | |
|-----|------------|-----------------------------|
| 40% | Viktorka | slender creeping red fescue |
| 30% | Barolympic | perennial ryegrass |
| 20% | Barlineus | chewings red fescue |
| 10% | Musica | chewings red fescue |

Sowing rate: 25 - 35 g per sq.m Sowing depth: 8 - 12 mm

Over sowing rate: 15- 25 g Min. cutting height: 4 mm

Available in 5 kg & 20 kg

Medal

Golf / Summer Sports

Designed for the construction or overseeding of medium-fine and fine turf with high wear pressure.

| | | |
|-----|------------|-----------------------------|
| 40% | Viktorka | slender creeping red fescue |
| 30% | Barolympic | perennial ryegrass |
| 30% | Barsignum | perennial ryegrass |

Sowing rate: 25 - 35 g per sq.m Sowing depth: 8 - 12 mm

Over sowing rate: 15 - 25 g Min. cutting height: 4 mm

20 kg

Ultrafine

Golf / Summer Sports

Ultrafine perennial ryegrass blend for unrivalled tolerance of close mowing and wear.

| | | |
|-----|------------|--------------------|
| 50% | Barolympic | perennial ryegrass |
| 30% | Barsignum | perennial ryegrass |
| 20% | Eventus | perennial ryegrass |

Sowing rate: 25 - 50 g per sq.m Sowing depth: 10 - 15 mm

Over sowing rate: 20 - 30 g Min. cutting height: 5 mm

20 kg

Extreme

Golf / Summer Sports

Hard-wearing 100% perennial ryegrass for extreme wear and aesthetic value and close-mowing performance for summer sports.

| | | |
|-----|--------------|--------------------|
| 35% | Barcristalla | perennial ryegrass |
| 25% | Bargold | perennial ryegrass |
| 25% | Eventus | perennial ryegrass |
| 15% | Barsignum | perennial ryegrass |

Sowing rate: 25 - 50 g per sq.m Sowing depth: 10 - 15 mm

Over sowing rate: 20 - 30 g Min. cutting height: 5 mm

(Cricket Min height: 2mm)

Available in 5 kg & 20 kg

RPR Golf

Golf

Perennial ryegrass with RPR technology that delivers a turf with exceptional wear tolerance, fast recovery and good aesthetics.

| | | |
|-----|------------|------------------------|
| 35% | Barlibro | RPR perennial ryegrass |
| 35% | Eurocordus | perennial ryegrass |
| 30% | Barsignum | perennial ryegrass |

Sowing rate: 25 - 50 g per sq.m Sowing: Depth 10 - 15 mm

Over sowing rate: 20 - 30 g Min. cutting height: 10 mm

20 kg

Fairway Rye

Golf

Balanced mix of species for medium-fine turf across a range of soil types.

| | | |
|-----|--------------|-----------------------------|
| 40% | Barcristalla | perennial ryegrass |
| 35% | Sergei | strong creeping red fescue |
| 15% | Barpearl | slender creeping red fescue |
| 10% | Musica | chewings red fescue |

Sowing rate: 25 - 35 g per sq.m Sowing: Depth 5 - 10 mm

Over sowing rate: 10 - 25 g Min. cutting height: 10 mm

20 kg



Platinum Fine Turf



Medal



Extreme



RPR Golf



Barenbrug Sport Grass Seed

RPR Sport **Sport / Football & Rugby**

Delivers on four key traits for football and rugby pitches.

| | | |
|---------------------------------|--------------|----------------------------|
| 40% | Barcristalla | dwarf perennial ryegrass |
| 30% | Barlibro | RPR perennial ryegrass |
| 30% | Barorlando | dwarf perennial ryegrass |
| Sowing rate: 30 - 50 g per sq.m | | Sowing depth: 10 - 15 mm |
| Over sowing rate: 15 - 30 g | | Min. cutting height: 18 mm |

20 kg

Smooth Sport **Football & Rugby**

Renovation and repair of football, rugby and sportsfields.

| | | |
|---------------------------------|------------|----------------------------|
| 40% | Barorlando | dwarf perennial ryegrass |
| 40% | Eurosport | dwarf perennial ryegrass |
| 20% | Bariris | smooth stalked meadowgrass |
| Sowing rate: 30 - 50 g per sq.m | | Sowing depth: 12 - 15 mm |
| Over sowing rate: 15 - 30 g | | Min. cutting height: 18 mm |

20 kg

SOS **Sport / Football & Rugby / Racing & Polo**

Superfast winter grass seed. The ultimate patching repair kit in cool temperatures.

| | | |
|---------------------------------|-----------|----------------------------|
| 50% | Barterra | annual ryegrass |
| 50% | Bardorado | perennial ryegrass |
| Sowing rate: 30 - 40 g per sq.m | | Sowing depth: 4 - 8 mm |
| Over sowing rate: 20 - 40 g | | Min. cutting height: 20 mm |

20 kg

RPR Sprint **Racecourses**

100% perennial ryegrass seed mixture specifically formulated for the unique demands of racecourses.

| | | |
|-----|--------------|-------------------------------|
| 30% | Barorlando | dwarf perennial ryegrass |
| 25% | Barcristalla | dwarf perennial ryegrass |
| 20% | Copeland | dwarf perennial ryegrass |
| 15% | Barlibro | RPR perennial ryegrass |
| 10% | Double | Tetraploid perennial ryegrass |

20 kg



RPR Sport



SOS

New for 2019 from BARENBRUG

Ignite (V8)

Golf

One of the finest leaf textures of any creeping bentgrass.

| | | |
|-------------------------------------|--------|--------------------|
| 100% | Ignite | creeping bentgrass |
| Sowing rate: 8 - 10 g per sq.m | | |
| Overseeding rate: 4 - 5 g per sq. m | | |
| Min. cutting height: 2 mm | | |

11.34 kg (bucket)

L-93XD

Golf

Bred for high performance golf greens and eXtra Disease (XD) tolerance.

| | | |
|-------------------------------------|--------|--------------------|
| 100% | L-93XD | creeping bentgrass |
| Sowing rate: 8 - 10 g per sq.m | | |
| Overseeding rate: 4 - 5 g per sq. m | | |
| Min. cutting height: 2 mm | | |

11.34 kg (bucket)

Elite Sport (Formerly Seven Sport)

Football & Rugby

A blend of four hard-wearing perennial ryegrasses for the renovation and construction of winter sports pitches.

| | | |
|---------------------------------|--------------|----------------------------|
| 40% | Europitch | dwarf perennial ryegrass |
| 25% | Eurocordus | dwarf perennial ryegrass |
| 25% | Barcristalla | dwarf perennial ryegrass |
| 10% | Eurosport | dwarf perennial ryegrass |
| Sowing rate: 30 - 50 g per sq.m | | Sowing depth: 10 - 15 mm |
| Over sowing rate: 15 - 30 g | | Min. cutting height: 18 mm |

20 kg

Multi Sport

Football & Rugby

Hard-wearing 100% perennial ryegrass for all sports environments.

| | | |
|---------------------------------|--------------|----------------------------|
| 40% | Barcristalla | perennial ryegrass |
| 30% | Barorlando | perennial ryegrass |
| 20% | Baromario | perennial ryegrass |
| 10% | Barlicum | perennial ryegrass |
| Sowing rate: 30 - 50 g per sq.m | | Sowing depth: 10 - 15 mm |
| Over sowing rate: 15 - 30 g | | Min. cutting height: 10 mm |

20 kg



Barenbrug Essential Grass Seed

E1 - Value Lawn and Landscape

Suitable for professional landscaping and domestic lawns, forming a dense and durable turf.

60% perennial ryegrass
40% strong creeping red fescue

Sowing rate: 25 - 35 g per sq.m Min. cutting height: 15 mm

20 kg

E2 - Tough Turf

Hardwearing mixture for playing fields, campsites, public open spaces and lawns.

40% Turfgold perennial ryegrass
20% Barclay II RPR perennial ryegrass
20% Bardorado perennial ryegrass
20% Dipper strong creeping red fescue

Sowing rate: 25 - 35 g per sq.m Min. cutting height: 15 mm

20 kg

E3 - Universal Turf

A great multi purpose mixture for areas that demand excellent aesthetics combined with ability to withstand high wear.

40% Dipper strong creeping red fescue
20% Barclay II RPR perennial ryegrass
20% Turfgold perennial ryegrass
20% Viktorika slender creeping red fescue

Sowing rate: 25 - 35 g per sq.m Min. cutting height: 12 mm

20 kg

E4 - Fine Turf

A traditional mixture containing only new-leaved fescue species. Often the choice when creating a high-quality lawn, due to their ability to create an exceptionally dense turf.

40% Dipper strong creeping red fescue
40% Reggae slender creeping red fescue
20% Capriccio chewings red fescue

Sowing rate: 25 - 35 g per sq.m Min. cutting height: 8 mm

20 kg

E5 - Extra Fine Turf & Bowling Green

Traditional blend of bent and fescue grasses – widely used on greens throughout the UK.

50% Reggae slender creeping red fescue
40% Capriccio chewings red fescue
10% Allure browntop bentgrass

Sowing rate: 25 - 35 g per sq.m Min. cutting height: 5 mm

Over seeding rate: 15 - 25 per sq.m

20 kg

E6 - 100% Bent Grass

Bentgrass mixture, ideal for golf and bowling greens renovations.

50% Allure browntop bent
50% Heriot browntop bent

Sowing rate: 10 g per sq.m Min. cutting height: 4 mm

Over sowing rate: 5 g per sq.m

10 kg

E7 - Sports Ryegrass

Designed for establishing and renovating sports turf surfaces and areas subjected to extreme levels of wear.

40% Fandango perennial ryegrass
30% Eurosport perennial ryegrass
30% Jubilee perennial ryegrass

Sowing rate: 30 - 50 g per sq.m

Over seeding rate: 15 - 30 g per sq.m

Min. cutting height: Winter 20 mm, Summer 5 mm

20 kg

E8 - Shaded Areas

A blend formulated to perform in areas that are subjected to increased levels of shade.

30% Barorlando perennial ryegrass
30% Dipper strong creeping red fescue
20% Reggae slender creeping red fescue
20% Triana hard fescue

Sowing rate: 25 - 35 g per sq.m Min. cutting height: 15 mm

Available in 5 kg & 20 kg

E9 - Mow Saver

Unique low maintenance mixture which utilises perennial ryegrass varieties that have demonstrated up to 40% slower growth when compared against other varieties.

50% Barsignum perennial ryegrass
35% Barmalia slender creeping red fescue
15% Capriccio chewings red fescue

Sowing rate: 25 - 35 g per sq.m Min. cutting height: 12 mm

20 kg

E10 - Clay/Waterlogged Soils

Formulated to be used on areas that are either prone to occasional flooding or seasonal waterlogging.

40% tall fescue
30% perennial ryegrass
20% strong creeping red fescue
10% perennial ryegrass tetraploid

Sowing rate: 30 - 40 g per sq.m Min. cutting height: 25 mm

20 kg

E11 - Water Saver - Dry Soils

Designed for areas of extremely dry, thin and sandy soil that are prone to drought. Useful for areas with normal soil conditions that are subject to restricted water usage.

50% tall fescue
50% perennial ryegrass

Sowing rate: 35 - 50 g per sq.m Min. Cutting height: 25 mm

20 kg

E12 - Rapid Repair & Winter Establishment

Rapid germination for emergency repairs and low temperature germination for winter use. In trials the annual ryegrass has germinated at temperatures as low as 3.5°C.

50% Barterra annual ryegrass
50% Double perennial ryegrass tetraploid

Sowing rate: 30 - 40 g per sq.m Over sowing rate: 20 - 40 g

Min. Cutting height: 20 mm

20 kg

E13 - Coastal Areas

Developed for coastal areas which are frequently composed of free draining sandy soils, prone to drought, and raised levels of salinity.

30% perennial ryegrass
30% slender creeping red fescue
20% hard fescue
20% tall fescue

Sowing rate: 30 - 40 g per sq.m Min. Cutting height: 25 mm

20 kg

essential
BARENBRUG



Barenbrug Essential Grass Seed

E14 - Airfield

The grasses included in the mixture are ones which have a stiff, upright growth habit that make it difficult for birds to land.

- 70% tall fescue
- 15% Cocksfoot
- 10% Timothy
- 5% Crested dogstail

Sowing rate: 20 - 30 g per sq.m Min. Cutting height: 150 mm

20 kg

E15 - Road Verge (Official Department of Transport Mixture)

Fast to establish and tolerant of the harsh conditions typical of road verges.

- 30% hard fescue
- 25% perennial ryegrass
- 20% strong creeping red fescue
- 10% smooth-stalked meadowgrass
- 10% bentgrass
- 5% white clover

Sowing rate: 10 - 20 g per sq.m Min. Cutting height: 75 mm

20 kg

E16 - Embankment & Ground Cover

The mixture includes a combination of deep-rooted, creeping, drought tolerant and hardwearing species to create an incredibly hardy mixture.

- 20% perennial ryegrass
- 20% strong creeping red fescue
- 15% annual ryegrass
- 15% slender creeping red fescue
- 15% tall fescue
- 10% hard fescue
- 5% bentgrass

Sowing rate: 25 - 50 g per sq.m Min. Cutting height: 50 mm

20 kg

E16C - Embankment & Ground Cover + Clover

The mixture includes a combination of deep-rooted, creeping, drought tolerant and hardwearing species to create an incredibly hardy mixture.

- 20% perennial ryegrass
- 20% strong creeping red fescue
- 15% annual ryegrass
- 12.5% slender creeping red fescue
- 12.5% tall fescue
- 10% hard fescue
- 5% bentgrass
- 5% white clover

Sowing rate: 25 - 50 g per sq.m Min. Cutting height: 50 mm

20 kg

E365 - Green 365

Formulated to create a year-round dark green turf. As well as having an excellent appearance, the mixture produces a very strong and durable turf.

- 50% Turfgold perennial ryegrass
- 25% Musica chewings red fescue
- 25% Reggae slender creeping red fescue

Sowing rate: 25 - 35 g per sq.m Min. Cutting height: 15 mm

Over seeding rate: 20 - 40 per sq.m

20 kg

Paddock Grass Seed Mix

Hunters Equestrian General Purpose Grass Seed

Hardwearing general-purpose mixture designed to withstand the pressures of equestrian use and provide good quality grazing for horses.

- 70% perennial ryegrass
- 16% strong creeping red fescue
- 8% meadow fescue
- 6% Timothy

Sows: Up to 0.7 acres

Repairs: 1 acre

10 kg



Barenbrug Green Velvet Lawn Seed

The All Rounder

A great everyday grass seed for areas of grass that get everyday use.

- 60% perennial ryegrass
- 40% strong creeping red fescue

Sowing rate: 25- 30 g per sq.m Sowing depth: 8 - 12 mm

Min. Cutting height: 25 mm

Available in 1.75 kg & 20 kg

The Shady One

A high quality grass seed mixture that is specifically formulated to create an excellent lawn in shady places.

- 30% Barlennium perennial ryegrass
- 30% Reverent strong creeping red fescue
- 20% Reggae slender creeping red fescue
- 20% Triana hard fescue

Sowing rate: 25 - 35 g per sq.m Sowing depth: 4 - 6 mm

Min. Cutting height: 15 - 25 mm

Available in 1.75 kg & 20 kg

The Perfectionist

A fine and luxury traditional lawn grass seed mixture delivering a superior, quality result for a lawn with a WOW factor.

- 40% Reverent strong creeping red fescue
- 30% Raisa chewings fescue
- 30% Libano slender creeping red fescue

Sowing rate: 25 - 35 g per sq.m Sowing depth: 8 - 12 mm

Min. Cutting height: 7 mm

Available in 1.5 kg & 20 kg



Barenbrug Wild Flower Mixes

Wildflower - Acidic Soils

A blend of wildflower species which are frequently found growing on soils with a low pH, such as heathland.
Sowing rate 100%: 2 g per sq. m 80/20%: 5 g per sq. m
1 kg

Wildflower - Bees & Butterflies

A broad and reliable mixture that contains annuals, perennials and biennials. Each wild flower species contained in the mixture is featured on the Royal Horticultural Society 'Perfect for Pollinators' list. Annual species will provide instant results by flowering in the first year.
Sowing rate 100%: 2 g per sq. m 80/20%: 5 g per sq. m
1 kg

Wildflower - Chalk, Limestone, Calcareous

Suitable for use on soils which are rich in chalk and limestone. These soils are characteristically quite thin, dry and low in nutrients.
Sowing rate 100%: 2 g per sq. m 80/20%: 5 g per sq. m
1 kg

Wildflower - Classic Annual Mix

Non-native annual mixture.
Sowing rate 100%: 2 g per sq. m
1 kg

Wildflower - Clay/Heavy Soils

Designed to be used on soils which are clay based, prone to waterlogging during the winter and sometimes drying out during the summer months.
Sowing rate 100%: 2 g per sq. m 80/20%: 5 g per sq. m
1 kg

Wildflowers - Coastal

Features species which are often found growing in a coastal environment. These species are typically quite hardy and tolerant of impoverished soils and a degree of salinity.
Sowing rate 100%: 2 g per sq. m 80/20%: 5 g per sq. m
1 kg

Wildflowers - Cornfield Annual

A 100% annual mixture designed to give a big hit of colour. Contains the five most popular UK native annual wildflower species. Can be added to other mixtures to provide impact in the first year.
Sowing rate 100%: 2 g per sq. m
1 kg

Wildflowers - Dry, Sandy Soils

Formulated to be used on soils which are sand based, free draining and very dry during the summer months.
Sowing rate 100%: 2 g per sq. m 80/20%: 5 g per sq. m
1 kg

Larger Pack Sizes available on request.



Acidic Soils



Bees & Butterflies



Chalk, Limestone, Calcareous



Classic Annual Mix



Clay/Heavy Soils



Coastal

Wild Flower Seed Mixtures

All wild flower mixes are available as 100% wild flowers or 80% wildflower 20% grass seed

PLEASE SPECIFY YOUR REQUIREMENT



Barenbrug Wild Flower Mixes

Wildflowers - General Purpose, Classic Hay Meadow

A mixture of some of the most commonly found wildflower species in the UK. Can be used on a broad range of soil types.

Sowing rate 100%: 2 g per sq. m 80/20%: 5 g per sq. m
1 kg

Wildflowers - Groundcover (low growing)

Non-native annual mixture containing 8 wildflower species.

Sowing rate 100%: 2 g per sq. m
1 kg

Wildflowers - Shaded Hedgerow & Woodland Edge

A mixture which features species that will tolerate a degree of shade and are typically found growing along hedgerows, on the edges of woodland and in woodland clearings.

Sowing rate 100%: 2 g per sq. m 80/20%: 5 g per sq. m
1 kg

Wildflowers - Loam / Variable Soils

A mixture designed to be used on loam soils which are a mixture of soil types and tend to retain a degree of moisture. A reliable mixture that can be used on larger sites where the soil varies across the site.

Sowing rate 100%: 2 g per sq. m 80/20%: 5 g per sq. m
1 kg

Wildflowers - Pastel Shades

Non-native annual mixture containing 8 wildflower species.

Sowing rate 100%: 2 g per sq. m
1 kg

Wildflowers - Red, White & Blue

Non-native annual mixture containing 26 wildflower species.

Sowing rate 100%: 2 g per sq. m
1 kg

Wildflowers - Short Flowers

Ideal for smaller areas along roadsides where restricting visibility may be an issue. The wildflower species used in this mixture will grow to approximately knee height.

Sowing rate 100%: 2 g per sq. m 80/20%: 5 g per sq. m
1 kg

Wildflowers - Tall Flowers

Formulated using wild flowers which can grow to approximately thigh height. Can be sown alongside our 'Short Flowers' mixture to create a contrasting feature.

Sowing rate 100%: 2 g per sq. m 80/20%: 5 g per sq. m
1 kg

Universal Wildflowers

A reliable mixture which will perform in almost any situation. Contains a blend of reliable perennial and annual species which give instant colour by flowering in the first year.

Sowing rate 100%: 2 g per sq. m 80/20%: 5 g per sq. m
1 kg

Wildflowers - Wetland & Water Edge

Suitable for sowing in areas bordering lakes, ponds and watercourses. Typically the soil in these areas will be moist year-round.

Sowing rate 100%: 2 g per sq. m 80/20%: 5 g per sq. m
1 kg



Groundcover (low growing)



Shaded Hedgerow



Pastel Shades



Loam/Variable Soils



Red, White & Blue



Short Flowers

Turf and Nematodes

Sovereign Turf

Regal Turf

For winter sports pitches, golf tees and hard wearing lawns. Dwarf perennial ryegrass, smooth stalked meadow grass, chewings fescue, strong creeping red fescue and slender creeping red fescue.

Elite Turf

For golf tees, surrounds and fine ornamental lawns. Smooth stalked meadow grass, chewings fescue, strong creeping red fescue, slender creeping red fescue and browntop bent.

New Century

Specifically grown for first class golf and bowling greens on sandy loam soils. Chewings fescue, slender creeping red fescue and browntop bent.

Xeris

Specially designed to need less moisture and withstand dry conditions, featuring tall fescue, dwarf perennial ryegrass and smooth stalked meadow grass. Xeris turf is the future of lawns for many UK householders faced with water scarcity and frequent hose pipe bans.

Paynes Turf

Grown in Essex and Suffolk on both free draining sandy loams and Essex clay.

Premium Grade Turf

For general lawns, landscaped areas and golf club use. Dwarf perennial ryegrass, slender creeping red fescue, strong creeping red fescue and chewings fescue.

Pro Sports Turf

For winter sports pitches, playing fields, golf courses and parks. Grown on sandy loam, dwarf perennial ryegrass, smooth stalked meadow grass, strong creeping red fescue,

In addition CTC supply turf from a variety of growers including County Turf, Harroden Turf, Spearhead and Tillers. For a quote please contact us.



Sovereign Turf

and slender creeping red fescue.

Nematodes

Chafer Grubs and Leatherjackets cause extensive damage by feeding on plant roots. Birds, badgers, foxes and other small mammals searching and pecking for the larvae can rip up already weakened turf. Moles and badgers are especially attracted to the protein-filled larvae.

Nemasys G and Nemasys J provide the perfect biological control by entering the larvae which stops them feeding. This happens within three days of infection. The larvae die within 10 - 14 days. The nematodes complete their life cycle within the larvae, then enter the soil seeking out more hosts and so the pest control continues naturally.

ICL Nemasys G

A biological solution for chafer grub control using insect parasitic nematodes. Must be refrigerated on delivery.

Pack coverage 500 sq.m
1 x 250 million tray

ICL Nemasys J

A biological solution for leatherjacket control using insect parasitic nematodes. Must be refrigerated on delivery.

Pack coverage 500 sq.m
1 x 250 million tray



Chafer grub



Leatherjacket

Prestige Granular Fertilisers

| Product | Analysis | Slow release | Type | Application rate per sq.m | Bag size |
|---|-------------------------------|--------------|------------|---------------------------|----------|
| Prestige Spring Summer Fine Turf High quality micro granulated (1 - 2 mm) fertiliser. | | | | | |
| FT Traditional | 12:0:9 + 2% Fe + 1% Mg | no | microgran. | 35 g | 25 kg |
| FT Longevity | 14:2:6 + 2% Mg | yes 25% MU | microgran. | 35 g | 25 kg |
| Sure Start | 16:0:16 + 2% MgO + 1% Fe + TE | yes 50% MU | microgran. | 25 - 35 g | 25 kg |

Prestige Organic Fine Turf

| | | | | | |
|----------------------|--------------------|-------------|------------|-----------|-------|
| FT All Season | 5:3:8 100% Organic | yes organic | microgran. | 35 - 70 g | 25 kg |
| Microbial TE | 8:0:0 + 1% Fe | yes organic | granular | 35 g | 25 kg |
| Microbial TE (NO FE) | 8:0:0 | yes organic | granular | 35 g | 25 kg |
| Microbial TE (NO FE) | 8:0:12 | yes organic | granular | 35 g | 25 kg |

Prestige Autumn Winter Fine Turf

High quality micro granulated (1 - 2 mm) fertiliser.

| | | | | | |
|------------------|----------------------------------|------------|------------|-----------|-------|
| FT Turf Initiate | 4:0:8 + 4% Fe + 2% Mg | no | microgran. | 35 g | 25 kg |
| FT All Season | 6:6:12 + 2% Fe + 2% Mg + seaweed | no | microgran. | 35 g | 25 kg |
| Stress Less | 13:0:26 + 1% Fe + TE | yes 50% MU | microgran. | 25 - 35 g | 25 kg |
| FT K Booster | 5:0:28 + 2% Mg | no | microgran. | 35 g | 25 kg |

Prestige Powders

| | | | | | |
|--------------------|-----------------|----|--------|------------|-------|
| No.1 Lawn Sand | 4.6:0:0 + 7% Fe | no | powder | 70 - 105 g | 25 kg |
| Standard Lawn Sand | 5:0:0 + 2% Fe | no | powder | 70 - 140 g | 25 kg |
| No.1 Turf Hardener | 2:0:8 + 4% Fe | no | powder | 70 g | 25 kg |

Prestige Sportsfield

High quality mini granular (2 - 4 mm) fertiliser.

| | | | | | |
|-----------------------|-----------------|------------|-----------|-----------|-------|
| Sportsfield Longevity | 12:2:10 + 2% Mg | yes 25% MU | minigran. | 35 - 50 g | 25 kg |
|-----------------------|-----------------|------------|-----------|-----------|-------|

Prestige Organic Sportsfield

A unique organic based granular (3 - 5 mm) fertiliser with trace elements which lasts for up to twelve weeks. Its minimal-scorch formulation makes it ideal for fairways, semi rough and sportsfield applications.

| | | | | | |
|----------------------|-------------------------|-------------|----------|-----------|-------|
| TE Spring and Summer | 12:6:6 + trace elements | yes organic | granular | 35 - 50 g | 25 kg |
|----------------------|-------------------------|-------------|----------|-----------|-------|

How to work out nutrient input for Granular Fertiliser



Use the following formula to convert to kg per hectare:

$$\frac{\text{Application rate (in g/m}^2\text{)} \times \% \text{ nutrient content of fertiliser applied}}{10}$$

Example: For an application of 12:0:9 fertiliser at 35g per sq.m

$$35 \times 12 \div 10 = 42 \text{ kg/ha. N}$$

$$35 \times 9 \div 10 = 31.5 \text{ kg/ha. K}_2\text{O}$$

For the efficient spreading of your fertilisers, see our extensive range of fertiliser spreaders on pages 66 and 67.



ICL Granular Fertilisers

| Product | Analysis | Slow release | Type | Application rate per sq.m | Bag size |
|----------------------------------|----------------|--------------|-----------|---------------------------|----------|
| ICL Sportsmaster Standard | | | | | |
| Spring Summer | 9:7:7 | no | minigran. | 35 - 70 g | 25 kg |
| Autumn Winter | 4:12:12 | no | minigran. | 35 - 70 g | 25 kg |
| Zero Phosphate | 12:0:9 + 1% Fe | no | minigran. | 35 - 50 g | 25 kg |

ICL Sportsmaster Specialities

| | | | | | |
|---------------|--|----|-----------|-----------|-------|
| Preseeder PS5 | 8:12:8 + 3% MgO + seaweed | no | minigran. | 35 - 50 g | 25 kg |
| Cleanrun Pro | 14:0:5 + chemicals (weedkiller) | no | minigran. | 35 g | 25 kg |
| Renovator Pro | 14:0:5 + Fe + chemicals (weed/moss killer) | no | minigran. | 35 g | 25 kg |

ICL ProTurf Outfield Fertilisers

| | | | | | |
|---------|---------------------------|-----|----------|-----------|-------|
| ProTurf | 20:0:7 + 3% CaO + 3% MgO | yes | granular | 20 - 35 g | 25 kg |
| ProTurf | 12:5:20 + 2% CaO + 2% MgO | yes | granular | 20 - 35 g | 25 kg |
| ProTurf | 15:5:15 + 2% MgO | yes | granular | 20 - 35 g | 25 kg |

ICL Sierraform GT

| | | | | | |
|-----------------|--|-----|-----------|-----------|-------|
| GT Momentum | 22:5:11 + 2% MgO + trace elements | yes | minigran. | 15 - 25 g | 20 kg |
| GT Preseeder | 18:22:5 | yes | minigran. | 15 - 25 g | 20 kg |
| GT All Season | 18:6:18 + 2% MgO + trace elements | yes | minigran. | 15 - 25 g | 20 kg |
| GT Anti Stress | 15:0:26 + Fe | yes | minigran. | 15 - 25 g | 20 kg |
| GT Spring Start | 16:0:16 + Fe + Mn | yes | minigran. | 15 - 25 g | 20 kg |
| GT K Step | 6:0:27 + 2% MgO + trace elements | yes | minigran. | 15 - 25 g | 20 kg |
| GT N K | 19:0:19 + 2% MgO + trace elements | yes | minigran. | 15 - 25 g | 20 kg |
| Step Hi Mag | Contains all necessary micro nutrients | no | minigran. | 7 - 11 g | 20 kg |

ICL Greenmaster Pro-Lite Fine Turf

| | | | | | |
|------------------|---------------------------------|----|------------|------|-------|
| Turf Tonic | 8:0:0 + 3% Fe + 3.3% MgO | no | microgran. | 35 g | 25 kg |
| Spring Summer | 14:5:10 + 2% MgO | no | microgran. | 35 g | 25 kg |
| NK | 12:0:12 + 2% Fe + 3.3% MgO | no | microgran. | 35 g | 25 kg |
| Double K | 7:0:14 + 4% Fe | no | microgran. | 35 g | 25 kg |
| Autumn | 6:5:10 + 6% Fe | no | microgran. | 35 g | 25 kg |
| Autumn Mg | 6:5:11 + 3% MgO + 0.5% Fe | no | microgran. | 35 g | 25 kg |
| Invigorator | 4:0:8 + 4% Fe + 2% Mg + seaweed | no | microgran. | 35 g | 25 kg |
| Invigorator Plus | 4:0:14 + 8% Fe + 2% Mg | no | microgran. | 35 g | 25 kg |
| Cold Start | 11:5:5 + 8% Fe | no | microgran. | 35 g | 25 kg |
| Pro-Iron | 7% Fe + 3% MgO + seaweed | no | microgran. | 35 g | 25 kg |

ICL Sierrablen

| | | | | | |
|---------------|-----------------|-----|----------|-----------|--------|
| Turfmix 9 S/S | 27:5:5 + Fe | yes | granular | 40 - 60 g | 25 kg |
| Turfmix 6 S/S | 28:5:5 + Fe | yes | granular | 35 - 50 g | 25 kg |
| Turfmix | 24:5:10 + 2% Fe | yes | granular | 30 - 45 g | 500 kg |

ICL Sierrablen Plus

| | | | | | |
|----------------------|-----------------------------------|-----|----------|-----------|-------|
| Starter 5 S/S | 24:5:8 + 2% MgO | yes | granular | 25 - 40 g | 25 kg |
| Active 5 S/S | 18:5:18 + 2% MgO | yes | granular | 25 - 40 g | 25 kg |
| Stress Control 5 A/W | 15:5:22 + 2% MgO | yes | granular | 25 - 40 g | 25 kg |
| Spring Starter 3 S/S | 24:5:13 | yes | granular | 20 - 30 g | 25 kg |
| Active 3 S/S | 19:5:18 + 2% MgO + trace elements | yes | granular | 20 - 30 g | 25 kg |
| Stress Control 3 A/W | 15:0:28 + 2% MgO | yes | granular | 20 - 30 g | 25 kg |
| S/S CalMag | 23:0:5 + 5% CaO + 2% MgO | yes | granular | 30 - 35 g | 25 kg |
| Pearl Renovator | 11:11:5 + 6% MgO + 6% CaO | yes | granular | 25 - 40 g | 25 kg |
| Pearl Turf Starter | 5:28:0 + 10% MgO | yes | granular | 25 - 40 g | 25 kg |

ICL Sierrablen Mini

| | | | | | |
|--------------|--------|-----|-----------|-----------|-------|
| Potash 4 S/A | 0:0:39 | yes | minigran. | 20 - 30 g | 25 kg |
|--------------|--------|-----|-----------|-----------|-------|



Autumn Products from ICL

Vitalnova[®] SeaMax

- Helps condition turf against stress.
- Helps enhance and develop root development.
- Improves turf colour and quality.



**BUY
NOW**

ICL

Sierraform[®] GT K-STEP

- Low nitrogen content for compact growth and turf hardening.
- Full trace element package to enhance turf health and aid recovery from stress.
- Magnesium content helps improve turf colour.



**BUY
NOW**

ICL



Vitax Granular Fertilisers

Vitax Enhance R

Bio-active fine turf fertiliser range with added Amino-Sorb. Available in a micro granular (1 - 1.2 mm) formulation Vitax Enhance is a unique fertiliser specially developed for fine turf areas including golf greens, bowling greens and quality sports pitches. Each homogenous granule contains all components to ensure even spreading and turf colour plus Bacillus Subtilis, a microbial element that increases resistance to pathogen attack. It also includes Amino-Sorb, the bio-stimulant that helps create a stress free environment and encourages healthy deep rooting.

| Product | Analysis | Slow release | Type | Application rate per sq.m | Bag size |
|-----------------|--------------------------------------|--------------|------------|---------------------------|----------|
| Enhance R S/S | 15:2:8 + 2% MgO + trace elements | yes | microgran. | 15 - 25 g | 20 kg |
| Enhance R A/W | 5:2:15 + 2% MgO + trace elements | yes | microgran. | 15 - 25 g | 20 kg |
| Enhance R Prime | 5:0:10 + 4% Fe + 2% MgO + t/elements | yes | microgran. | 15 - 25 g | 20 kg |

Enhance R Outfield

This high quality mini granular (3 - 4 mm) formulation has been specifically designed for fairways, sportsfields and outfield areas.

| | | | | | |
|------------------------|-------------------------------|-----|-----------|------|-------|
| Enhance R Outfield S/S | 15:2:6 + MgO + trace elements | yes | minigran. | 25 g | 20 kg |
| Enhance R Outfield A/W | 6:2:10 + MgO + trace elements | yes | minigran. | 25 g | 20 kg |

Vitax Soil Management Products

Easy to apply mini prills that are readily dispersed by water. SulpHur 95 should be used to reduce the soil pH following soil analysis results. The effect on soil pH should be evident between 2 - 3 months, with the degree of pH reduction varying on soil type.

| | | | | | |
|------------|------------------------------|-----|------------|------|-------|
| SulpHur 95 | 95% sulphur for pH reduction | yes | mini-prill | 15 g | 15 kg |
|------------|------------------------------|-----|------------|------|-------|

For the efficient spreading of your fertilisers, see our extensive range of fertiliser spreaders on pages 66 and 67. To work out the nutrient being applied per application see our helpful hints box on page 21.



For more information on Vitax Swardphite and Vitasil please go to page 35.



Straight Granular Fertilisers

We supply a comprehensive range of traditional straight fertilisers (supply only one major plant food) and balanced general fertilisers (supply all three major NPK nutrients). Some of these are inorganic, powdered or granular and some are organic solids.

Granulated Lime

A fine granular product for easy, even and accurate spreading, with reduced dust. Useful source of calcium and magnesium.

20 kg Application rate various.

Dried Blood

11:0:0 Straight nitrogen organic fertiliser.

A safe source of quick acting organic nitrogen which naturally produces more vigorous growth.

25 kg Application rate 35 g sq.m.

Prestige Fish, Blood and Bone

5:5:6.5 NPK fertiliser for general garden use.

A good general purpose, organic fertiliser ideal for use all round the garden.

25 kg Application rate 70 g sq.m.

Greenvale Organic Pellets

5:3:3 Nitrogen, phosphate and potash organic fertiliser.

A genuine organic fertiliser which also contains a range of trace elements essential for root and plant development.

25 kg Application rate 100 - 250 g sq.m.

Prestige Growmore Granular

7:7:7 Balanced nitrogen, phosphate and potash fertiliser.

A multi purpose plant food with an even balance of nutrients suitable for all crops either as a base or a top dressing.

25 kg Application rate 70 - 130 g sq.m

Prestige Kieserite

16% Mg. A readily available form of magnesium for turf which helps correct magnesium deficiency in sandy soils.

25 kg Application rate 17 g sq.m

Magnesium Sulphate (Technical Grade)

A high quality 16% MgO fully water soluble product for horticultural use. (Bitter salts)

25 kg Application rate various.

Mono Ammonium Phosphate (Technical Grade)

Highly efficient water soluble source of N&P used at early plant establishment for root development.

25 kg Application rate various.

Potassium Nitrate (Technical Grade)

13:0:46 (totally soluble) giving the ideal combination of low nitrogen and high potassium. Apply as a liquid formulation.

25 kg Application rate 25 - 50 kg in 450 - 600 litres of water per hectare.



Granulated Lime



Growmore Granular



Kieserite



Potassium Nitrate



Prestige Rose Food

5:5:10 For use around rose bushes.

A balanced general fertiliser supplying all three major NPK nutrients.

25 kg Application rate 35 - 70 g sq.m.

Prestige Sulphate of Ammonia (Soluble)

21:0:0 Quick acting nitrogen.

Soluble sulphate of ammonia contains 21% nitrogen and 24% sulphur.

25 kg Application rate 25 kilos per hectare. Soluble formation.

Prestige Sulphate of Iron (Soluble)

21% Fe (heptahydrate formulation). A high quality soluble version which can also be applied as a powder or as a liquid. Applied in liquid formulation, extra attention must be paid when dissolving this fertiliser to avoid blockages and to ensure sprayability.

25 kg Apply 20 - 30 kg in 800 - 1,000 litres of water per hectare. Powder application rate 9 g per sq.m.

Prestige Sulphate of Potash

0:0:50 Powdered potassium fertiliser which hardens plants. A fast acting source of potassium to help the development of healthy fruit and flowers.

25 kg Application rate 35 g sq.m.

Urea Prilled (Technical Grade)

46:0:0 (totally soluble) giving a high level of nitrogen. Best applied in a liquid formulation using approx. 25 - 50 kg in 450 - 600 litres of water per hectare.

25 kg

Yara Mantrac

A flowable liquid micronutrient fertiliser containing a high concentration of manganese for application as a foliar spray or seed treatment to a wide range of crops to treat or prevent manganese deficiency. 500 g per ltr

5 ltr

Yara Magflo

Can be used to regulate the uptake of other plant nutrients, assist with phosphate metabolism and is essential for chlorophyll production. Apply in 200 - 500 ltrs of water per hectare.

10 ltr Application rate 2 - 4 ltr per hectare



For the efficient spreading of your fertilisers, see our extensive range of fertiliser spreaders on pages 66 and 67.



Rose Food



Sulphate of Ammonia



Sulphate of Iron



Urea Prilled



Aquatrols Organic & Liquid Fertilisers

Organic Fertilisers

Aquatrols Combi

A quality foliar turf treatment containing a full range of trace elements. The trace elements are fully chelated to maintain availability for the turf to ensure optimal results.

1 ltr coverage 5,000 - 10,000 sq.m

Aquatrols Calcium Plus

19.5:0:0 + 9% Calcium

A root and foliar feed that builds and strengthens cell walls in roots, stems and leaves. High levels of calcium in the cell of the plant make the cell wall rigid, which strengthens the turf against disease.

10 ltr Coverage various

Also available in 210 ltr

Aquatrols Premium K

0:0:38

A revolutionary source of potassium having superior foliar absorption. Premium K has been demonstrated to have up to 5 times the foliar uptake of tradition forms of potassium.

10 ltr Coverage various

Also available in 210 ltr

Aquatrols Premium N

35:0:0

A high performance liquid fertiliser with the nitrogen source being methylene urea. This summer fertiliser provides high quality, high strength nitrogen at an affordable price.

Pack coverage various

25 ltr Coverage various

Also available in 210 ltr



Aquatrols Calcium Plus



Aquatrols Attain



Aquatrols Premium K



Aquatrols Calcium Plus

Flo-Gro Super Concentrates

Aquatrols Flo-Gro Spring & Summer

36:0:12 + 2% S + 1% Mg.

A balanced 3:1 nitrogen:potash analysis with zero phosphate and sulphur. The ideal liquid fertiliser for balanced nutrient supply and good colour without excessive top growth.

10 ltr Coverage 2,000 sq.m giving 13:0:4 nutrient value

Aquatrols Flo-Gro NK Special

31:0:26 + 5% S + 2% Mg.

A balanced nitrogen and potash fertiliser with sulphur. Particularly suitable for sandy and light soils with low potash.

10 ltr Coverage 2,500 sq.m giving 11:0:9 nutrient value

Aquatrols Flo-Gro Complete

30:7:22

A specially formulated balanced fertiliser where phosphates may be required as well as nitrogen and potash. Complete is a good all round standard for use throughout the year.

10 ltr Coverage 3,333 sq.m giving 8:2:6 nutrient value

Aquatrols Flo-Gro Super Nitrogen

38:0:0

A high nitrogen fertiliser, ideal for intensively managed fine turf where phosphate and potash levels are in sufficient supply.

10 ltr Coverage 2,000 sq.m giving 18:0:0 nutrient value

Also available in 200 ltr

Aquatrols Flo-Gro Potash Plus

2.5:0:25.5

An autumn treatment with sulphur, iron and magnesium to improve the colour and hardness of the grass in readiness for winter.

10 ltr Coverage 2,500 sq.m giving 0:0:6 nutrient value

Aquatrols Attain

8:0:0 + 3% Fe

Attain promotes optimal plant and soil health for all turf types, including greens, tees, fairways and sports turf. Attain maximises the benefit of existing nutrition elements and supports consistent and sustainable root growth.

10 ltr Coverage 10,000 sq.m giving 0.92N and 0.345 Fe nutrient value

“Attain is our go-to plant & soil conditioner this season.”

- The Mendip GC Greens Team



 **ATTAIN**
Bio-Nutritional Liquid Extract
with Liquid Organic and Kelp Enhancement



All the talk is true, try Attain and see for yourself

Attain, derived from natural sources, is not just your average bio-nutritional. It has been developed using an innovative bio-extraction process which promotes optimal plant and soil health for all turf types, including greens, tees, fairways, and sports turf.

Benefits include:

- ✓ Promotes optimal plant and soil health for all turf types
- ✓ Maximise the benefit of existing nutritional elements
- ✓ Supports consistent and sustainable root growth

“We tank-mix Attain with Revolution and you see consistency across the greens within days. It's a must-have combination for us.”

- Allan Black, Royal Jersey GC

“Sward density and coverage have vastly improved since using Attain.”

- Paul Hamilton, Ralston GC

 **Aquatrols**[®]

INNOVATE. IMPROVE. INSPIRE.



01328 700600



sales@collier-turf-care.co.uk



www.collier-turf-care.co.uk

Prestige Liquid Fertilisers

Prestige NPK Spring Summer

12:4:8 + 5% seaweed extract.

All round general purpose spring and summer product including seaweed extract.

20 ltr Coverage 1,666 - 5,000 sq.m

Also available in 200 ltr & 1000 ltr.

Prestige NK Spring Summer

15:0:12 + 2% Fe.

A balanced zero phosphate feed for spring and summer use with 2% iron for immediate colour up.

20 ltr Coverage 1,666 - 5,000 sq.m

Also available in 200 ltr & 1000 ltr

Prestige NK Autumn Winter

5:0:12 + 5% Fe.

A high strength potassium feed for autumn and winter use, providing winter hardiness with a strong greenup effect.

20 ltr Coverage 5,000 - 10,000 sq.m

Also available in 200 ltr & 1000 ltr

Prestige NPK Autumn Winter

6:4:12 + 5% seaweed extract.

A balanced NPK (high potash) fertiliser for general use which includes sand based and traditional constructed greens.

20 ltr Coverage 1,666 - 5,000 sq.m

Also available in 200 ltr & 1000 ltr

Prestige Super Fairway + Iron

10:0:0 + 5% Fe + 5% Sugars.

Designed to enhance the visual quality of golf fairways and sports fields. It is a blend of ureic N, sulphate of iron and carbohydrates.

200 ltr Coverage 100,000 sq.m (10 hectares)

Also available in 1000 ltr



NPK Spring Summer



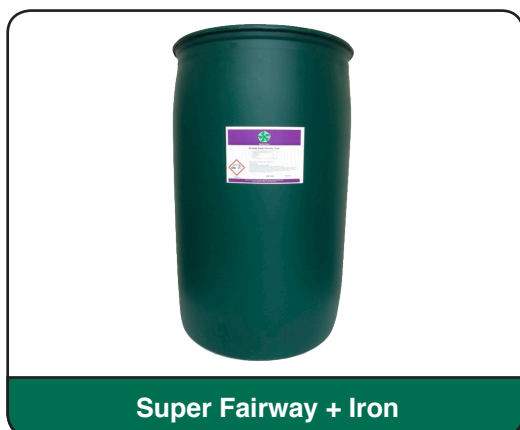
NK Spring Summer



NK Autumn Winter



NPK Autumn Winter



Super Fairway + Iron



Prestige Foliar Liquids

Prestige High N Spring Summer

25:0:0 A high N controlled release 4 - 6 week liquid fertiliser for turf containing ammonium sulphate, methylene urea and straight urea.

20 ltr Coverage 1,666 - 10,000 sq.m

Also available 200 ltr & 1000 ltr

Prestige Green Seaweed

Seaweed extract + 3.7% Fe. A seaweed extract plus iron helps to prevent leaf yellowing and gives an excellent green colour.

20 ltr Coverage 10,000 sq.m

Also available 200 ltr & 1000 ltr

Prestige Super Seaweed

30% seaweed extract.

New formulation for 2017. Concentrated seaweed extract containing a nutrient enhanced package.

20 ltr Coverage 10,000 - 20,000 sq.m

Also available in 200 ltr & 1000 ltr

Prestige Nugro 6:2:4 Organic Liquid

A high performance, organic plant nutrient fertiliser, derived from liquidised plant proteins. Apply as and when required as a general foliar spray. Prestige Nugro 6:2:4 Organic liquid can also be used as a tank mix with selective herbicides to enhance their performance and to give good colour to the sward. Apply 5 - 10 litres in 200 - 600 litres water per hectare.

10 ltr Coverage 10,000 - 20,000 sq.m

Also available in 200 ltr & 1000 ltr

Prestige Super Micro Nutrient TE Liquid

A fully chelated formulation which improves the foliar absorption by the leaf. Once inside the leaf the chelates break down making the nutrients readily available to the plant.

10 ltr Coverage 20,000 - 33,333 sq.m



High N Spring Summer



Super Seaweed



Super Micro Nutrient TE Liquid

How to work out Nutrient input for Liquid

In order to calculate the nutrient inputs from liquid fertilisers you need to use the Specific Gravity (kg/litre) of the specific product being used.

Use the following formula to calculate nutrient input:

$$\text{(Ltr/ha.)} \times \text{Specific Gravity (SG)} \times \text{(\% Nutrient/100)} = \text{kg nutrient/ha.}$$

Example: For an application of 15:0:12 @ 40 Ltr/ha. (SG = 1.25kg/Ltr)
convert application rate from Ltr/ha. to kg/ha. (40Ltr/ha. X 1.25 = 50kg/ha.)
Multiply product rate (kg/ha.) by % N content (ie. 50 X 15% = 7.5kg/ha.)
Multiply product rate (kg/ha.) by % K content (ie. 50 X 12% = 6.0kg/ha.)

For the efficient spreading of your fertilisers, see our extensive range of sprayers on pages 63 and 64.



Prestige Super Foliar Liquids

The Prestige range has been specifically designed to give the highest level of foliar uptake and performance. Enhancing the performance are surfactants, a pH buffer and a full trace element package.

Foliar Autumn 6:3:12 + TE

A high strength potassium feed for autumn and winter use.

10 ltr Coverage 5,000 - 10,000 sq.m

Foliar Spring and Summer 14:3:7 + TE

All round general purpose spring and summer use.

10 ltr Coverage 5,000 - 10,000 sq.m

Foliar Zero Phosphate 10:0:10 + TE

A balanced zero phosphate for spring and summer use.

10 ltr Coverage 5,000 - 10,000 sq.m



Foliar Autumn



Foliar Spring Summer



ICL Liquid Fertilisers

ICL Greenmaster High N

25:0:0 + 2% MgO + trace elements.

Early spring fertiliser plus magnesium for rapid green up.

10 ltr Coverage 833 - 2,500 sq.m

Also available in 200 ltr

ICL Greenmaster NK

10:0:10 + trace elements.

Phosphate free NK fertiliser for all year round use.

10 ltr Coverage 833 - 2,500 sq.m

Also available in 200 ltr

ICL Greenmaster Spring and Summer

12:4:6 + trace elements.

Complete NPK formula for main summer season feeding.

10 ltr Coverage 1,250 - 3,333 sq.m

Also available in 200 ltr

ICL Greenmaster High K

3:3:10 + trace elements.

High potash autumn and winter NPK fertiliser, which increases stress tolerance.

10 ltr Coverage 800 - 2,500 sq.m

Also available in 200 ltr

ICL Greenmaster Step Liquid

Chelated trace elements.

Ideal for correcting plant nutrient imbalances.

10 ltr Coverage 1,666 - 5,000 sq.m

ICL Greenmaster CalMag

9:0:0 + 13% CaO + 3% MgO + trace elements

Greenmaster Liquid CalMag has been developed to boost turf health where calcium and magnesium are required. The formulation is extremely tank-mix compatible and produces excellent turf colour and quality responses.

10 ltr Coverage 1,250 - 5,000 sq.m

Also available in 200 ltr & 1,000 ltr



Greenmaster High N



Greenmaster NK



Greenmaster Spring and Summer



Greenmaster Step Liquid



ICL Liquid Fertilisers

ICL Vitalnova StressBuster

7:0:0 + 2% Fe + sugars + WA + amino + TE

Unique liquid formulation designed to precondition turf against stress and to help generate quick recovery.

10 ltr Coverage 2,000 - 4,000 sq.m

Also available in 200 ltr & 1000 ltr

ICL Vitalnova AminoBoost

8:0:7 + 10% amino acids

Liquid fertiliser containing amino acids designed for foliar feeding in the summer.

10 ltr Coverage 10,000 sq.m

ICL Vitalnova SILK

0:7:12 + 6% Si

Potassium silicate formulation designed for leaf and stem cell strengthening.

10 ltr Coverage 5,000 sq.m

ICL Vitalnova Seamax

Vitalnova SeaMax contains seaweed extract which has proven to be extremely effective in trials and by end users. The seaweed concentrate has been shown in trials to improve turf colour, turf quality, root development and stress tolerance.

10 ltr Coverage 20,000 sq.m

Also available in 200 ltr

ICL Vitalnova Blade

5:6.5:3.5 + carbohydrates + seaweed + TE

Carbohydrate and seaweed micro nutrients. When used within an overall turf maintenance programme, usage has shown increased grass plant sward density and health.

10 ltr Coverage approx. 2,000 - 4,000 sq.m

Also available in 200 ltr & 1000 ltr

Sportsmaster Water Soluble Fertilisers

Premium foliar fertilisers containing TMax for enhanced foliar and root nutrient uptake.

ICL Sportsmaster WSF High N

35:0:14 + trace elements.

High nitrogen ensures a fast initial effect. It lasts 2 - 4 weeks.

15 kg Coverage 2,500 - 10,000 sq.m

ICL Sportsmaster WSF High K

15:0:43 + trace elements.

Ideal to apply prior to stress conditions such as drought or winter. Lasts 2 - 4 weeks.

15 kg Coverage 2,500 - 10,000 sq.m

ICL Sportsmaster SeaMax WSF Seaweed

A premium soluble powder product containing over 75% seaweed to improve turf colour and quality.

1 kg Coverage 10,000 sq.m

ICL Sportsmaster Liquid Fertilisers

ICL Sportsmaster Liquid Fe

A cost effective liquid iron treatment for use on sports fields and fairways. It gives a quick and long lasting green up (up to four weeks) and is an ideal tank-mix partner for Primo Maxx.

200 ltr Coverage 50,000 - 100,000 sq.m



Sportsmaster WSF High N

How to work out Nutrient input for Solubles

In order to calculate the nutrient inputs from Soluble fertilisers you need to use the following formula:

Application rate (kg per hectare) x % nutrient divided by 100

Example: For an application of 35:0:14 soluble fertiliser applied at 30kg/ha.

$$30 \times 35 \div 100 = 10.5 \text{ kg/ha. N}$$

$$30 \times 14 \div 100 = 4.2 \text{ kg/ha. K}$$

For the efficient spreading of your fertilisers, see our extensive range of sprayers on pages 63 and 64.



Vitax Liquid Fertilisers

Vitax Enhance F (Foliar Fertiliser)

Developed principally as an easily absorbed rapid response foliar fertiliser for fine turf. It is also suitable for root-zone feeding at high application rates.

Vitax Enhance F Spring and Summer

12:1.5:6 + trace elements (with Amino-Sorb).
Formulated to contain all components to promote stress resistance, deep rooting, sward density and good colour.

10 ltr Coverage foliar 5,000 sq.m
Coverage root-zone 667 - 2,000 sq.m

Vitax Enhance F Autumn and Winter

4:1.5:12 + trace elements (with Amino-Sorb).
Formulated to contain all components to promote stress resistance, deep rooting, sward density and good colour.

10 ltr Coverage foliar 5,000 sq.m
Coverage root-zone 667 - 2,000 sq.m

Vitax Enhance F Prime Spring Starter

5:0:10 + trace elements (with Amino-Sorb).
Formulated to contain all components to promote stress resistance, deep rooting, sward density and good colour.

10 ltr Coverage foliar 5,000 sq.m
Coverage root-zone 667 - 2,000 sq.m

Seaturf Liquids

Specially formulated for sports turf, the Vitax Seaturf range is produced from the seaweed laminaria digitata harvested in the clear Atlantic Ocean.

Vitax Seaturf Super Concentrate

A concentrated seaweed extract to improve turf development without stimulating soft grass growth. It promotes early season root growth by stimulating photosynthesis.

10 ltr Coverage 10,000 sq.m

Vitax Seaturf Complete

12:0:6
An ideal seaweed turf stimulant for use during the growing season. The balance of nitrogen and potash being provided to give a rapid response for wear recovery and resistance to drought.

10 ltr Coverage 1,515 sq.m

Vitax Seaturf Iron Extra

6% Fe + 3% N.

The addition of extra iron to Seaturf will give a fast greenup, usually within 24 hours, which will last for 4 to 6 weeks. Seaturf Iron Extra will also act as a turf hardener, assisting in the prevention of turf diseases.

10 ltr Coverage 2,500 sq.m



Enhance F Spring and Summer



Enhance F Autumn and Winter



Vitax Seaturf Super Concentrate



Amino-Sorb Biostimulants

Proven amino acid technology creates a stress free environment, which helps turf to thrive and achieve its maximum performance whatever the circumstances. Under normal circumstances turf plants synthesise their own amino acids, but when under stress conditions they need a little help.

Vitax Amino-Sorb F

Foliage absorbed amino acid supplement will give turf relief from stress and helps it to maintain overall quality by increasing the photosynthesis rate and chlorophyll concentration.

5 ltr Coverage 10,000 sq.m

Vitax Amino-Sorb R

Root absorbed amino acid supplement expressly formulated for root growth, enhanced germination and stress relief. It also increases nutrient uptake and creates conditions for weedkillers and fungicides to work more efficiently.

5 ltr Coverage 3,333 sq.m

Vitax SwardPhite

4:30:8

An innovative fertiliser based on potassium phosphite (PO₃). This promotes healthy turf growth by aiding the turf's natural defence systems and by stimulating meristem cell activity in roots and crowns.

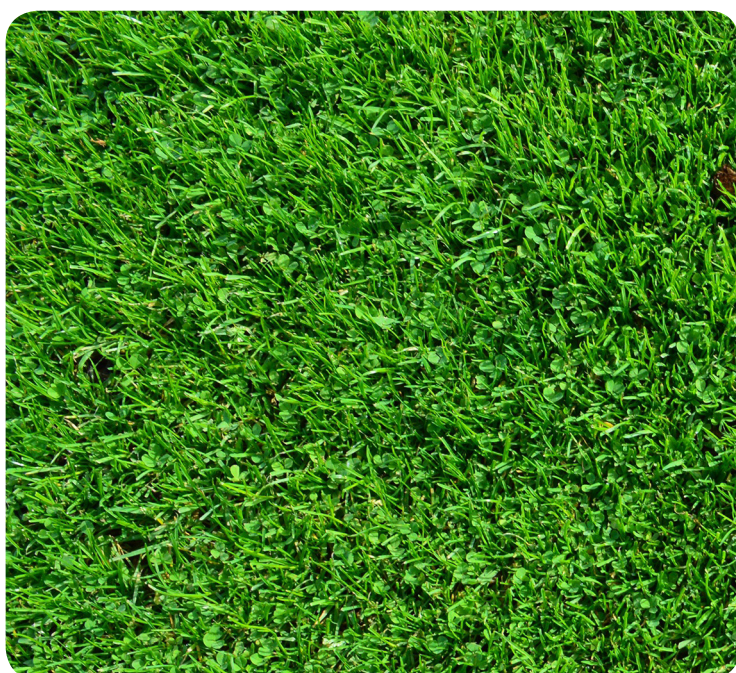
10 ltr Coverage 25,000 sq.m

Vitax VitaSil

14% Potash (K₂O) + 7% Silicon (Si) + humates.

A liquid silicon stress reducer for turf. VitaSil provides essential potassium and beneficial silicon, plus uptake enhancing humates.

10 ltr Coverage 20,000 sq.m



Amino-Sorb F



Amino-Sorb R



SwardPhite



VitaSil



Granular and Liquid Irons

Prestige Armour

9% Fe + 4.5% MgO + seaweed

A slow release iron, magnesium and seaweed blend specifically designed to give an even, steady release ensuring plant strength, health and colour without promoting soft growth. With a 1 - 2 mm homogenous granulation it breaks down quickly and lasts for about 12 weeks.

25 kg Coverage 714 sq.m

Liquid Irons

Aquatrols Ferrosol

6% Fe and 4% S

A foliar applied unique iron nitrogen bonded complex which provides a quick greenup of the turf without over stimulation of growth. Ideal for use at any time when turf is in need of a greenup boost, and in the autumn it will harden the turf and strengthen it against disease.

10 ltr Coverage 5,000 sq.m

Also available in 200ltr

Prestige Super Green Autumn

2:0:6 + 6% Fe.

A concentrated liquid iron and nitrogen potash fertiliser. It gives rapid greenup (usually within 24 hours) and lasts up to 6 weeks. It colours and hardens the turf without stimulating soft growth.

20 ltr Coverage 5,000 - 10,000 sq.m

Also available in 200 ltr

ICL Greenmaster Effect Fe Liquid Iron

This new 6.9% liquid iron represents the next generation of liquid iron technology. It is based on a new and unique formulation, which combines both complexed and chelated iron giving both long lasting and rapid-acting results.

10 ltr Coverage 5,000 sq.m

Also available in 200 ltr



Water Soluble Irons

Prestige Heptasol

A fast acting soluble iron (19.5%) for the greening and toughening of sports turf. Due to the sulphur content (12.5%), regular applications can help to acidify soil at the surface which will also help to reduce worm activity. Heptasol can also be used for moss control where it burns off the moss and to help with disease prevention where it toughens the leaf blade.

12.5 kg Coverage 5,000 sq.m



Heptasol

ICL Sierrasol Sportsmaster WSF Iron

A high quality ferrous sulphate (20% iron) formulation for rapid greenup, hardening and toughening of the sward. Ideal for use during autumn and winter low temperature conditions.

15 kg Coverage 7,500 - 15,000 sq.m

Vitax 50/50 Soluble Iron

A fast acting soluble 20.5% ferrous sulphate (iron) formulation for rapid greenup and toughening of the sward to promote disease resistance.

10 kg Coverage 4,000 sq.m



Soil Conditioners

Outcast

Outcast is a specialist ammonium sulphate based fertiliser with added surfactants for application to any amenity turf to acidify the surface and lower the pH. It can significantly reduce or even eradicate the soil casting of earthworms.

10 ltr

Barclay Biosorb

Biosorb is a calcined naturally occurring, free flowing ceramic granule for the conditioning of sand, soil and composts. It works by increasing percolation rates and improving aeration on free draining soils with a low CEC.

30 ltr Fine 0.5 - 1 mm

Barclay Energise

Energise contains menefee humate (a natural humic acid) which improves the soil structure helping to maintain optimal quantities of air, water and nutrients. It encourages root growth which promotes stronger, healthier turf.

22.68 kg Energise G (granular)

Prestige W Soil Conditioner

2.5:1:1

A natural based and balanced low analysis winter soil conditioner containing slow release nutrients. Also containing specific plant extracts, it increases microbial activity boosting plant health and reducing turf stress.

20 kg Coverage 666 sq.m

Rubber Crumb

Rubber Crumb is an innovative way to reinforce turf, this product should be used when the grass is actively growing and applied after tining or spiking. It needs to be worked down into the holes where it will help eliminate compaction, aid growth, improve drainage and reduce wear.

25 kg Standard 1 - 3 mm

Rigel-G

Is a silicon and garlic based plant nutrient that helps plants overcome stress caused by difficult growing conditions such as drought, disease and insect damage. Rigel-G helps strengthen plant tissue and the unique combination of silicon and a salicylic acid derivative plus garlic has been found to enable plants to resist a range of insect attacks.

1 ltr Coverage 3,333 - 5,000 sq.m

Purity Granular Soil Conditioner

An all new organic mini grade soil conditioner, made from plant extracts, which is designed to purify the soil before the onset of spring growth and autumn/winter shut down.

20 kg Coverage 660 sq. m

Purity Liquid Soil Conditioner

An all new organic liquid soil conditioner, made from plant extracts, which is designed to purify the soil before the onset of spring growth and autumn/winter shut down.

10 ltr Coverage 1250 sq. m

Zeolite

Clinoptilolite Zeolite is a naturally occurring porous mineral with an extremely high cation exchange capacity. Added to sports turf areas such as golf greens, Zeolite will reduce compaction and increase moisture and aid nutrient retention.

25 kg Fine 0.5 - 1 mm

25 kg Medium 1 - 3 mm



Biosorb



W Soil Conditioner



Rigel-G



Prestige Speciality Products

This range of unique speciality products has been developed to deal with major turf problems. Manufactured from the highest quality ingredients, these products provide the answer to many greenkeepers' problems.

Prestige Super D Thatch

A specifically formulated microbial bio-stimulant and enzyme product that boosts microbial populations, increasing rooting and plant health. This product reduces thatch especially when used in conjunction with high aeration and mechanical thatch removal.

10 ltr Coverage 10,000 sq.m

Prestige Super Establisher

3:1:4 + Mycorrhizae + 5% Humic Acid.

This unique granular fertiliser and bio-stimulant increases seed growth and establishment. It has both mycorrhizae and humic acid added to aid turf recovery following aeration and turf wear. Best applied after spiking or verti-cutting it must have soil contact. Apply 40 g per sq.m as a standard feed.

20 kg Coverage 500 sq.m

Prestige Super Humic Acid

A specifically formulated bio-stimulant, that increases rooting and plant health. Can be used all year round but best timing is in spring and autumn. Apply 10 litres in 500 - 600 litres water.

5 ltr Coverage 5,000 sq.m

Prestige Super Liquid Carbon

An effective liquid carbon based treatment for dealing with oil spillages. It is essential that all oil spillages are treated as soon as they occur, this will provide optimum results. First remove as much oil as possible with absorbent paper then apply the product. Apply 10 litres in 50 litres water per 500 sq.m

5 ltr Coverage 250 sq.m

Prestige Super Potassium Silicate

6% Silica (Si) + 15% Soluble Potash (K₂O).

A new unique product specifically formulated for turf. This specialist silica and potash fertiliser is designed to make your grass stand up straight. Improves uniform cutting and appearance of turf with increased ball roll and green speed.

10 ltr Coverage 10,000 sq.m



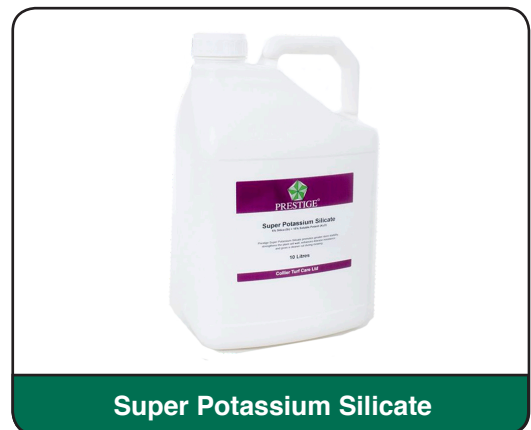
Super D Thatch



Super Establisher



Super Humic Acid



Super Potassium Silicate



Growth Regulators

ICL Primo MaXX II

Trinexapac-ethyl.

Primo Maxx II is an advanced, liquid plant growth regulator to be used on managed turf grass areas.

- Enhances turf health and playing surface consistency
- Delivers improved playability by increasing turf density
- Improved turf quality and wear tolerance
- Promotes healthy plants that are better able to resist the effects of stress and disease

Pack coverage depends on type of area, type of grass and height of cut. Do not apply Primo MaXX II to stressed turf, for best results Primo MaXX II should be tank mixed with a seaweed or liquid fertiliser product.

5ltr Coverage various MAPP No. 17509

Also available in 10 ltrs

Greens: Coverage (5 ltr) 125,000 sq.m

Tees: Coverage (5 ltr) 31,250 - 62,500 sq.m

Fairways: Coverage (5 ltr) 20,833 - 31,250 sq.m

Rough & Semi-rough: Coverage (5 ltr) 15,625 - 20,833 sq.m



Primo MaXX II

Use plant protection products safely. Always read the label and product information before use.

Liquid Moss Control

Brinton's MMC Pro

MMC Pro is a broad spectrum antiviral and antibacterial disinfectant especially developed to target black/green mould, algae and moss on hard surfaces only. Apply 5 litres mixed with 20 litres of water and spray to saturate the surface. Dilution rate 1:4 equals 25 useable litres covering approx. 75 - 150 sq.m.

5 ltr Coverage various HSE No. 7284

Certis Mogeton

Quinoclamine.

A horticultural turf treatment for golf courses on managed amenity turf. One application per year between May and August when moss is actively growing. Mogeton contains an orange indicator dye so that the operator can see which areas have been treated - this orange dye fades shortly after application.

750 g Coverage 500 sq.m MAPP No. 15837

ICL Ranger

Chloride, organic acid and surfactants

A hard surface cleaner for use on concrete, asphalt, tarmac, block paving, artificial sports surfaces and any hard surface areas.

5 ltr Coverage 500 sq.m HSE No. 10045

Indigrow Opal Green (Moss Biocide)

For the control of algae, mosses, moulds, fungi, slime, liverworts and lichen on hard surfaces only including concrete, asphalt, tarmac, block paving and artificial sports surfaces. Opal Green is based around a blend of organic acids, biocides and surfactants. The surfactants allow the acid and biocide to spread and penetrate the moss or algae. The acid then kills them directly by burning.

The standard rate of application is 5 litres per 1000 sq.m in 50 litres of water (50 litres per hectare in 500 litres of water). This low water rate offers significant advantages over comparative products and results in saving of time and labour resource. For more permeable surfaces such as Astroturf, a higher water rate of 1000 litres per hectare should be used.

5 ltr Coverage 1,000 sq.m HSE No. 9114



MMC Pro



Ranger



Hard Surface Moss Control



MMC Pro



Opal Green



Ranger

Turf Moss Control



Standard Lawnsand



No.1 Lawnsand



Mogeton

Moss Control



Hard-hitting contact fungicide designed for preventative use.

- Attacks disease pathogens on leaf, in thatch and on soil surface
- Great when conditions are cold (below 6°C)
- Performs well as a pre-snow application
- Rainfast in 1 hour
- The perfect cold weather fungicide



Label Approved Diseases

- ✓ Microdochium Patch
- ✓ Anthracnose
- ✓ Leaf Spot

Please contact your local sales representative for more information.

Medallion[®] TL contains fludioxonil. MAPP No. 15287. Registered Trade Mark of Syngenta Group Company. Use plant protection products safely. Always read the label and product information before use.



01328 700600



sales@collier-turf-care.co.uk



www.collier-turf-care.co.uk

Vitalnova® Stressbuster



Liquid treatment to help condition turf against stress and also aid recovery from stress.

- A turf specific biostimulant that helps condition the turf against stress
- Provides turf boost at any time of year
- Immediate colour-up response
- 7-0-0 + 2Fe + sugars + wetting agent + amino + TE

Part of the Vitalnova range



**Vitalnova®
AminoBoost**



**Vitalnova®
SILK**



**Vitalnova®
Blade**

Please contact your local sales representative for more information.

ICL

© Registered Trade Mark of ICL Limited



01328 700600



sales@collier-turf-care.co.uk



www.collier-turf-care.co.uk

Turf Fungicides

ICL Heritage

Azoxystrobin.

Featuring both preventative and curative actions against turf diseases unparalleled by existing turf fungicides. It enters turf grass through the leaf, stem, crown and root system moving throughout the plant giving excellent protection.

100 g Coverage 2,000 sq.m MAPP No. 13536

Also available in 500 g

ICL Heritage MaXX

Azoxystrobin.

Heritage MaXX has taken the world's top selling fungicide active ingredient azoxystrobin to a new level, to consistently deliver exceptional turf quality. Heritage MaXX has the broadest spectrum of turf diseases (7) on the label and with no LERAP is the easiest to use. Fast acting, it tackles both foliar and soil diseases giving excellent longer lasting turf disease control.

3 ltr Coverage 12,000 sq.m MAPP No. 14787

ICL Instrata Elite

Difenoconazole, Fludioxonil

Instrata Elite gives a powerful combination of curative and contact plus systemic properties, for reliable turf protection outside and in the plant.

3 ltr Coverage 10,000 sq.m MAPP No. 17976

Also available in 1 ltr

ICL Medallion TL

Fludioxonil.

Medallion TL is the exciting new 'contact+' turf fungicide proven to give exceptional long lasting protection from microdochium (fusarium) patch and other turf diseases. Contact+ activity of Medallion TL controls disease pathogens on the leaf, in the thatch and at the soil surface.

3 ltr Coverage 10,000 sq.m MAPP No. 15287

Also available in 1 ltr

Oath

Tebuconazole and Trifloxystrobin.

A broad spectrum contact and systemic fungicide for the control of microdochium patch, anthracnose, dollar spot, leaf spot, red thread and rusts in amenity turf, at any time of the year.

500 ml Coverage 5,000 sq.m MAPP No. 18520

NEW Clayton Bestow

Tebuconazole and Trifloxystrobin.

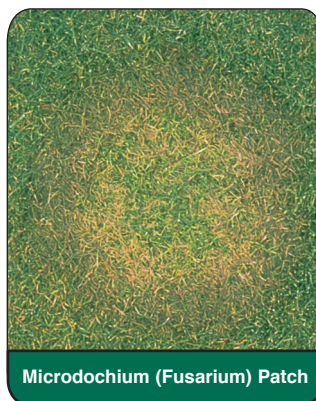
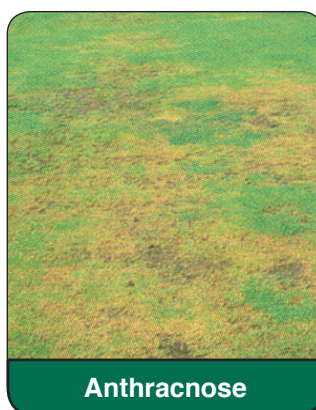
Clayton Bestow is a fungicidal mixture having both contact and systemic properties and is recommended for the control of certain diseases of in established turf and amenity grass e.g. golf courses and other sports areas, parks and lawns including commercial and residential areas

500 ml Coverage 5,000 sq.m MAPP No. 17185

Worm Control



We don't currently sell any products to control earthworms. We do have a selection of products and good advice that can vastly reduce the casting caused by earthworms. Talk to the Grass Guys about worm cast reduction products and advice.

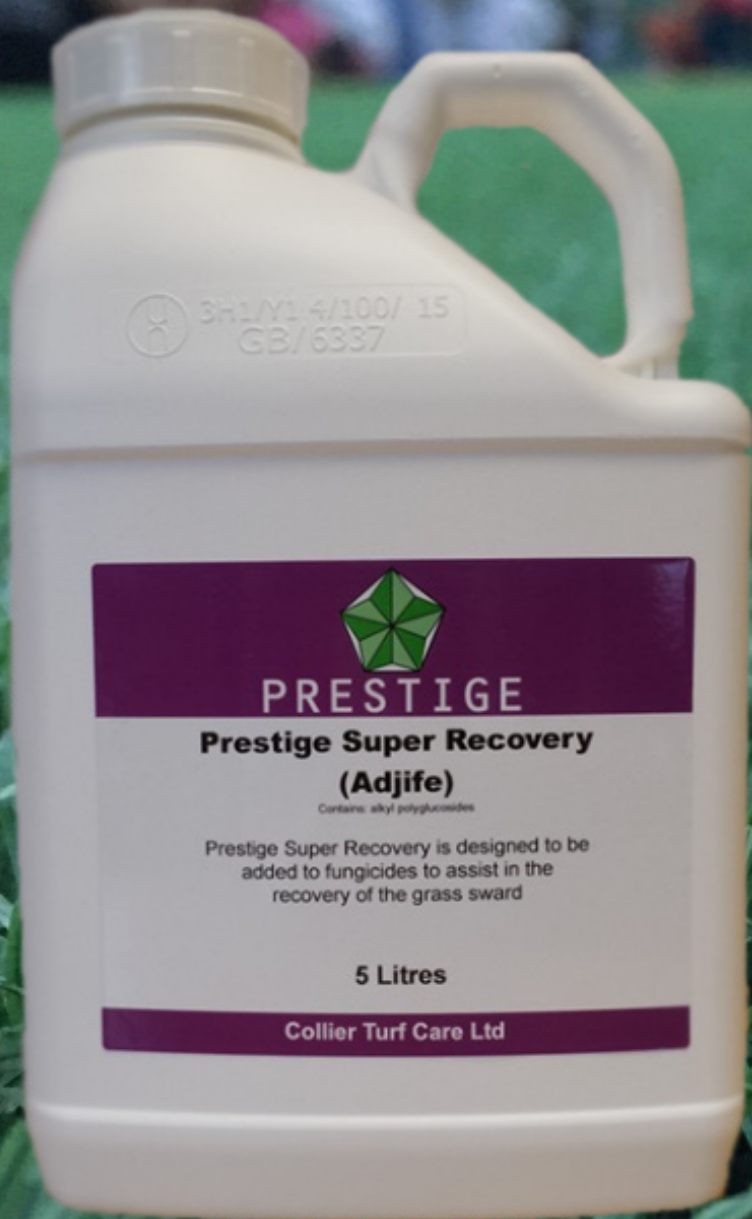


Use plant protection products safely. Always read the label and product information before use.



Prestige Super Recovery

(AdgiFE) (ADJ A0797)



- Fully tank mixable
- Complex iron provides a visual green up
- Green up masks the blackening of the weeds
- Surfactant contains a stick and spreader
- Surfactant enhances efficiency of the iron

A registered adjuvant designed to be added to fungicides and herbicides to assist in the recovery of the grass.

Tough on weeds Kind on grass

Holster XL



Barclay
CROP PROTECTION

Holster XL[®]

MAPP 16407

Contains 100 g/l (2.7% w/w) fenoxiprop-P as the 1-*n*-methylheptyl ester, 100 g/l (2% w/w) 2,4-D as the 2-methylheptyl ester and 50.2 g/l (1.48% w/w) dicamba as an amulsifiable concentrate

Holster XL is a selective post-emergence herbicide for the control of a range of broad-leaved weeds in managed amenity turf including fine turf and nearby grassland

Marketing Company: Barclay Chemicals Manufacturing Ltd., O'Meara Park, Donaghadee Industrial Park, Malinbeg, Co. Donegal, Ireland.
Tel: +353 1 9112800 Fax: +353 1 6224079
E-mail: info@barclay.ie Website: www.barclay.ie

Approved Holder: Barclay Chemicals R&D Ltd
Contact details as above

Copyright © Barclay Chemicals (PBC) Limited, 2014.
Holster XL is a registered trademark of Barclay Chemicals (PBC) Ltd

PROTECT FROM FROST
2 Litres e 33801374

IMPORTANT INFORMATION
FOR USE ONLY AS AN AGRI-CULTURAL HERBICIDE
See Directions for Use on attached leaflet for the following safety precautions, Concentrations, Maximum permitted area of product, Maximum use rate, Label date of Application and other specific precautions.
READ THE LABEL BEFORE USE. USING THIS PRODUCT IN A MANNER THAT IS UNAUTHORIZED WITH THE LABEL MAY BE AN OFFENCE. FOLLOW THE CODE OF PRACTICE FOR USING PLANT PROTECTION PRODUCTS



Take the tough work out of turf weeds with Holster XL. The combination of three powerful active ingredients in Holster XL delivers outstanding control of a range of broad-leaved weeds in turf, including hard-to-kill problem weeds like speedwell, dandelions, chickweed and daisies.

But that's not all. Holster XL is also kind to grass – so gentle, in fact, that it's safe to use on newly-sown grass after just two months.

Holster XL. It's got tough weeds within its grasp.

Holster XL[®] is a registered trade mark of Barclay Chemicals Manufacturing Ltd. MAPP 16407. Use plant protection products safely. Always read the label and product information before use. For details of warning phrases and symbols relating to Holster XL[®], and any further product information, please use www.barclay.ie

Barclay
CROP PROTECTION

Selective Turf Weedkillers

Barclay Holster XL

Fluroxypyr, dicamba and 2,4-D.

Holster XL controls slender speedwell (early spring application for best results), white clover, yarrow, yellow suckling clover and most problem weeds in turf. Its three powerful ingredients used at a low application rate of 2 litres per hectare make it very safe. It can be used on newly sown grass after eight weeks and is ideal for fine turf applications, such as golf and bowling greens.

2 ltr Coverage 10,000 sq.m MAPP No. 16407

Dow Grazon Pro

Triclopyr and Clopyralid

Herbicide for the control of perennial broad leaf weeds including nettles, docks, thistles, brambles, broom and gorse.

1 ltr 60ml in 10 ltr water spot treatment
MAPP No. 15785

ICL Enforcer

Dicamba, MCPA and mecoprop-P.

A selective herbicide for broad leaved weeds in managed amenity turf including lawns, golf courses and sports fields.

5 ltr Coverage 6,666 sq.m MAPP No. 17274

ICL Esteron T

2,4-D and florasulam

Esteron T is a low volume dual action selective herbicide for the control of broad-leaved weeds in managed amenity turf and domestic lawns.

2 ltr Coverage 24,000 sq.m MAPP No. 17432

ICL Icade

Aminopyralid and triclopyr.

For the control of invasive and tough woody weeds such as japanese knotweed, hogweed and buddleia.

1 ltr Coverage various MAPP No. 16182

ICL Praxys

Florasulam, fluroxypyr and clopyralid.

A selective systemic post emergence herbicide, it rapidly enters target weeds travelling through the whole plant (includes the roots) to give an excellent kill with no regrowth.

2 ltr Coverage 10,000 - 20,000 sq.m
MAPP No. 13912

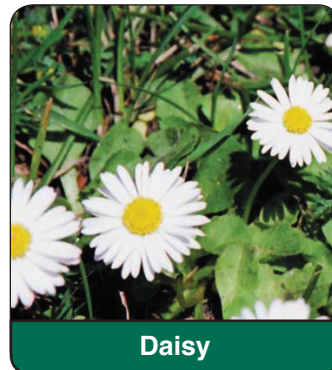
Vitax Lawn Clear RTU Turf Weedkiller

Clopyralid, 2,4-D and MCPA.

A ready to use, trigger spray pack for spot treatment on a wide variety of broadleaved weeds.

12 x 750 ml Coverage various MAPP No. 15195

* For enhanced selective weed control, add **Prestige Nugro**. A high performance, organic plant nutrient fertiliser, derived from liquidised plant proteins.



Daisy



Speedwell



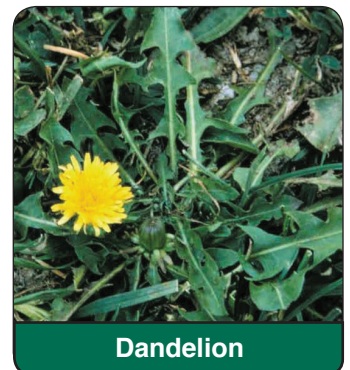
Pearlwort



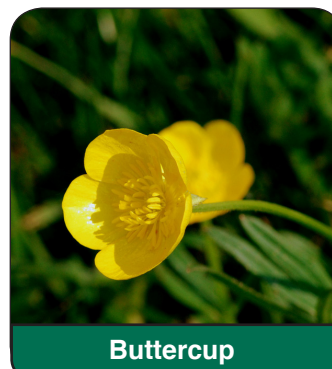
Yarrow



White Clover



Dandelion



Buttercup



Yellow Suckling Clover

Tips for using selective weedkillers

All selectives work best when the weeds are growing well. This usually occurs between April and September and when moisture levels are good. The types of weed and whether it is fine turf (golf and bowls) or outfield (fairways and sports fields) dictates the product to be used. Using a spray marker dye will ensure accurate application avoiding missed areas and possible turf damage due to overlap. Avoid using selective weedkillers in drought or frosty conditions.

Use plant protection products safely. Always read the label and product information before use.



Holster XL[®]

Speedwell control

Holster XL is a combination product containing 105g/l fluroxypyr, 285g/l 2 4-D and 52.5g/l dicamba. It is registered for use for the control of a range of broad leaved weeds in managed amenity turf including fine turf and amenity grassland.

Excellent performance against slender speedwell in amenity turfgrass:



- Apply in spring and early summer before weeds begin to flower
- Apply when weeds are small and actively growing
- Also covers a wide range of broad-leaved weeds
- Apply at a maximum rate of 2L/ha
- Ensure water PH is in the range of 4 to 7 for optimum results
- Spray on to a dry target leaf

Remember:

- Good control relies on adequate soil moisture
- Do not spray three days either side of mowing
- More than one application may be required

Be aware of:

- Drift on to susceptible crops and non-target species
- Frost or conditions when grass is suffering from stress
- Avoid water contamination

Total & Residual Weedkillers

Barclay Gallup Biograde Amenity

Glyphosate.

A non-irritant 360 g/ltr total translocated glyphosate herbicide which controls both annual and deep rooted perennial weeds.

5 ltr Coverage various MAPP No. 17674

Barclay Gallup Hi-Aktiv

Glyphosate.

High strength 490 g/ltr total translocated glyphosate herbicide which controls both annual and perennial weeds.

5 ltr Coverage various MAPP No. 17646

Barclay Gallup Home & Garden

Glyphosate.

A foliar applied total herbicide to control annual and perennial grass and weeds. It contains 360g/ltr of glyphosate and it is inactivated on contact with the soil and broken down by soil organisms to leave no lasting residual effects, allowing replanting in the area it has been applied after the weed has desiccated.

1 ltr Coverage 2,000 sq.m MAPP No. 17672

Barclay Kerb Granules

Propyzamide.

A pre or post emergence residual herbicide that provides long term residual control of annual and perennial grasses and a wide range of other weeds. It can be used in forestry and woodlands, ornamental trees, rose beds and recreation sites.

4 x 3.85 kg Coverage 2 x 2,000 trees MAPP No. 14213

Barclay Propyz

Propyzamide.

A pre or post emergence residual herbicide that provides efficient control of annual and perennial grasses and a wide range of broad leaved weeds. It can be used in forestry and woodlands, ornamental trees, rose beds and recreation sites.

1 ltr Coverage 11,760 - 13,330 sq.m MAPP No. 15083

Belchim Chikara

Flazasulfuron.

Broad spectrum herbicide for use in non crop situations. If weeds are emerged a tank mixture with an amenity glyphosate is recommended to give both initial control and persistent residual control for up to 5 months.

50 g Coverage 3,333 sq.m MAPP No. 14189

Also available in 200g



Gallup Biograde Amenity



Gallup Home & Garden



Barclay Propyz



Belchim Chikara



Total & Residual Weedkillers

Clayton Apt

Flazasulfuron.

Broad spectrum herbicide for use in non crop situations. If weeds are emerged a tank mixture with an amenity glyphosate is recommended to give both initial control and persistent residual control for up to 5 months.

50g Coverage 3,333 sq.m MAPP No. 15157

Also available in 200g

Ecoplug Max

Glyphosate.

Ecoplug Max is an effective non-selective herbicide tree stump control application method which kills the whole root system of targeted trees with no effect on surrounding trees.

Pack 100 plug Coverage various MAPP No. 17581

Ecoplug Drill Bit

A drill bit to ensure to drill to the correct depth when using Ecoplugs.

ICL ProShield

Diflufenican and glyphosate.

A non-selective total herbicide for the control of a wide range of annual and perennial broad leaved weeds and grasses.

5 ltr Coverage 11,000 sq.m MAPP No. 17451

Monsanto Roundup ProActive 360

Glyphosate.

A non-irritant 360 g/ltr biograde total translocated herbicide.

5 ltr Coverage 5,000 - 33,000 sq.m MAPP No. 17380

Monsanto Roundup ProVantage 480

Glyphosate.

High strength 480 g/ltr non-irritant total translocated glyphosate herbicide which controls both annual and perennial weeds.

5 ltr Coverage 13,333 - 22,222 sq.m MAPP No. 15534

NoMix Dual CDA

Glyphosate and sulfosulfuron.h

A non-irritant, non-selective translocated, residual weedkiller for use through a NoMix Compact CDA lance.

4 x 750 ml Outer coverage 3,000 sq.m MAPP No. 13420

NoMix Hilite CDA

Glyphosate.

A non-irritant, non-selective translocated, non-residual herbicide for use through a NoMix Compact CDA lance.

4 x 750 ml Outer coverage 3,000 sq.m MAPP No. 13871



Clayton Apt



Ecoplug Max



Roundup ProActive 360



NoMix Hilite CDA



For accurate weed control.



When you need accurate and reliable weed control, Barclay has the solution.

PROPYZ[®] delivers simple, efficient control of annual and perennial grasses, plus a wide range of broadleaved weeds. When long-term results are crucial, it's dependable.

What's more, its high-tech formulation promises excellent plant safety. Peace of mind when using it around trees and shrubs, reducing all that time-consuming and labour-intensive strimming and mowing.

But its adaptability for both pre- and post-emergence situations is what really marks it out from the crowd: PROPYZ[®] gives you a flexibility other amenity products can only dream about.



Demand results. Use PROPYZ[®].



PROPYZ[®] is a registered trade mark of Barclay Chemicals Manufacturing Ltd. MAPP 15083. Use plant protection products safely. Always read the label and product information before use. For details of warning phrases and symbols relating to PROPYZ[®], and any further product information, please use www.barclay.ie



01328 700600



sales@collier-turf-care.co.uk



www.collier-turf-care.co.uk

50

Ecoplug Max

Drill inserts to prevent tree stump regrowth.

- Minimises root and stump sprouting
- 95 - 100% efficacy on treated stumps

www.icl-sf.co.uk

Please contact your local sales representative for more information.

One Pack contains
100
plugs



ICL
Where needs take us

EcoPlug Max contains glyphosate. Max™ is a trade mark of Monsanto Technology LLC. Ecoplug Max® is a registered trademark of Ecoplug Sweden AB. Use plant protection products safely. Always read the label and product information before use.

Insecticides

AgroPharm Pyrethrum 5EC

Pyrethrins (naturally occurring).

A broad spectrum contact insecticide suitable for edible and non-edible crops. It controls a wide range of pests including aphids, whitefly, thrips, caterpillars and leaf feeding insects.

1 ltr Coverage various MAPP No. 12685

Fargro DiPel DF

Bacillus thuringiensis.

A biological insecticide used for the control of caterpillars in ornamentals and amenity vegetation. Can be used to control brown tail moth in amenity situations. It is totally safe and kills the caterpillar with death occurring in a few days. It is essential to get good coverage with water rates of 400 - 1,000 litres per hectare. Application rate 750 g per hectare.

500 g Coverage 6,666 sq.m MAPP No. 11184

Mole Traps

These scissor mole traps are poison free, fast and efficient mole control products. The traps have a strong spring action and are easy to set with a simple straight-forward mechanism.

Nippon Ant Killer Powder

Permethrin.

Highly effective control of common black ants and crawling insects.

12 x 500 g Coverage various

Nippon Wasp Nest Destroyer Foam

Permethrin and Tetramethrin.

Powerful spray aerosol that will destroy a wasp nest from a distance of up to 3 metres.

12 x 300 ml Coverage various

Vitax Slug Gone

Wool Pellets

A natural organic way to keep slugs and snails away from plants.

10 ltrs Coverage various

Pest Controls

Rabbit Control

Grazers

A non pesticide trace element based spray which is safe to pets, wildlife and the environment. The effective easy solution to damage caused by grazing rabbits, pigeons, deer and geese. Lasts up to six weeks.

1 ltr Coverage Amenity 2.5 acres

1 ltr Coverage Agriculture 10 acres

Use plant protection products safely. Always read the label and product information before use.



DiPel DF



Mole Traps



Vitax Slug Gone



Grazers





Aquatrols®



ZIPLINE®

FAST FIRM FINE TURF
with Soil Resource Enhancement



UNLOCK YOUR TURF'S TRUE POTENTIAL

Zipline, the new soil surfactant from Aquatrols, contains a blend of two high performance proven chemistries to aid with water management. Powered by AquaVita™, it also contains a proprietary technology specifically designed to aid turf care professionals to consistently deliver Fast, Firm, Fine Turf with soil resource enhancement.

Zipline promotes balanced hydration, unlocks bound nutritional elements and delivers consistent results on all turf types.

Learn more at aquatrols.com/Zipline

KEY BENEFITS



Promotes balanced hydration



Unlocks existing bound nutritional elements



Delivers consistent results

ICL H2Pro AquaSmart

Specially formulated for use on fairways and outfield areas. It protects turf quality through periods of dry conditions and improves water use efficiency.

5 ltr Coverage 10,000 sq.m

Also available 200 ltr

ICL H2Pro Dewsmart

Dewsmart is designed to prevent or reduce the formation of dew on the grass leaf. This is ideal for use as part of an ITM approach to help minimise the risk of disease outbreaks and improve surface quality.

10 ltr Coverage 10,000 sq.m

ICL H2Pro FlowSmart

Helps surface water penetrate quickly providing a drier surface in wet conditions. Maximises the effectiveness of irrigation treatments and assists with flushing of carbonates and salts from root zones.

10 ltr Coverage 10,000 sq.m

Also available in 200 ltr

ICL H2Pro SaltSmart

A unique calcium penetrant wetting agent designed to effectively flush salts from the rootzone. The combined penetrant and Ca formulation efficiently flushes water through the rootzone whilst exchanging problem salts (Na +) with Ca.

5 ltr Coverage 2,500 sq.m

ICL H2Pro TriSmart

A premium wetting agent that can be used monthly. Best applied before drought conditions arise it offers preventative and curative action against dry patch.

5 ltr Coverage 2,000 - 5,000 sq.m

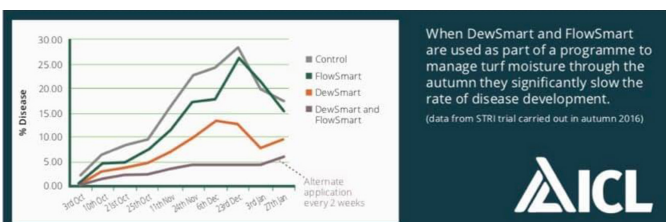
Also available in 200 ltr

ICL Qualibra

The next generation wetting agent giving dynamic penetration with efficient water movement and distribution. Should be applied at 4 weekly intervals.

10 ltr Coverage 5,000 sq.m

Also available in 200 ltr and 500 ltr



**NEW
PRODUCT**



AquaSmart



DewSmart



FlowSmart



TriSmart



Liquid Wetting Agents

Prestige Super Infiltrate Liquid

Is a special blend of penetrants and wetting agents which remove excess moisture from the playing surface moving it down through the root zone. This produces a drier, firmer surface, helps with disease prevention and creates air channels within water logged pore spaces.

10 ltr Coverage 10,000 sq.m

Prestige Super Fairway Liquid

Has three modes of action giving excellent wetting and water retention, optimising penetration and lateral water movement in the root zone. Lasts up to 4 weeks and can be tank mixed with Prestige Super Fairway plus iron.

10 ltr Coverage 5,000 sq.m

Also available in 200 ltr

Prestige Super Replenish Liquid Wetting Agent

A "Tri-block copolymer formulation" liquid wetting agent featuring an advanced surfactant technology formulation. This gives excellent wetting, optimising penetration and lateral water movement in the rootzone. Apply in early spring prior to dry patch symptoms then apply every 30 days for best results.

10 ltr Coverage 5,000 sq.m

Prestige Super Replenish +

A unique monthly applied surfactant based on a new co block polymer formulation. Excellent water penetration to enhance the management of water, moisture content and air within the rootzone.

10 ltr Coverage 5,000 sq.m

**NEW
PRODUCT**

Vitax Clearing

An effective treatment specially designed for fairy ring control. Best used in late spring or early autumn when there is moisture and the fairy ring is active.

2.5 ltr Coverage 625 sq.m

Vitax Early Start

A highly efficient dew dispersant which lasts for approximately 3 weeks. Used in the autumn and winter it is very effective in removing dew from the surface thus reducing the need to manually switch the greens surface.

2 ltr Coverage 10,000 sq.m

Vitax Ultraflo Advance

A superior long term non-ionic wetting agent with a new and improved formulation which remains effective for longer and increases turf grass safety.

10 ltr Coverage 2,000 - 4,000 sq.m



Prestige Super Replenish



Vitax Clearing



Vitax Early Start



Vitax Ultraflo Advance



Granular Wetting Agents

Aquatrols Aquaduct Flex

Aquaduct Flex is a fast acting dual action granular wetting agent that treats and prevents localised dry spot in sportsturf and residential lawns and that is also safe to use on ornamental gardens, landscapes, trees and shrubs.

Coverage Curative and Preseeder 1,600 sq.m
Preventative 4,000 sq.m

ICL H2Pro Conserve Granular

This granular product is free flowing and dust free, after application it releases the H2Pro and quickly breaks down. Best applied on a bimonthly application.

10 kg Coverage 500 sq.m

Prestige Super Replenish Granular Wetting Agent

A new Tri-Block Copolymer formulation featuring advanced surfactant technology. Make the first application in early April and repeat approximately 3 months later. A single application will give a long lasting effect of up to 3 months.

15 kg Coverage 500 sq.m

Pelleted Wetting Agents

Aquatrols Advantage Plus Pellets

Easy to use pellets featuring superior Advantage Plus formulation to improve hand watering.

Pack 6 pellets Coverage various

Aquatrols Advantage Plus Pellets Plus Seaweed

Easy to use pellets featuring superior Advantage Plus formulation with high quality seaweed extract to stimulate root and healthy vigorous turf growth.

Pack 6 pellets Coverage various

ICL H2Pro Conserve Tablet

A 100% active tablet containing H2Pro wetting agent for immediate relief of plant stress caused by hydrophobic soil conditions.

Pack 6 tablets Coverage 6 x 500 sq.m

Prestige Super Replenish Concentrated BIG Tablet

A large 3 kg concentrated slowly soluble surfactant big tablet for use in irrigation storage tanks. Add a tablet to your irrigation tank and this will help combat dry patch as well as lubricating pop up sprinklers.

Pack 1 pellet Coverage 1 big tablet mixes with 2,500 litres of irrigation tank water

Prestige Super Replenish Hose End Pellets

Wetting and penetrating agent in easy to use tablet form. They are designed to be applied using an applicator gun, for the treatment of dry patch and water repellent soils in amenity turf. Apply via H2Pro applicator gun.

Pack 6 pellets



Conserve Granular



Aquaduct Flex



Advantage Plus Pellets



Conserve Tablets



Applicator Guns

Aquatrols Liquid Pro Applicator

A lightweight siphon mixing system that is ideal for applying Aqueduct liquid, a fantastic tool for touching up dry patch.

Aquatrols Advantage Pellet Applicator Gun

A specially designed gun for applying Aquatrols Advantage Plus Pellets and Prestige Super Hose End Pellets

H2Pro Applicator Gun

This hose end gun attaches to the hose pipe for ease of use. For a quick application of wetting agent to dry spots. It also has a rose nozzle.



Liquid Pro Applicator



Advantage Pellet Applicator Gun



H2Pro Applicator Gun

**Use applicator guns safely.
Always read the product
instructions before use.**

Collier Turf Care Identification and Nutritional Educational Charts

COLLIER TURF CARE Specialists COLLIER SPORTS

IDENTIFICATION CHART

Barclay's BARENBRUG AICL

TURF DISEASES

TURF WEEDS

GRASS SEEDS

TURF PESTS

Get our Grass Guys Weekly Disease Blog delivered to your inbox every Monday! Email sales@collier-turf-care.co.uk or speak to your Local Area Technical Sales Representative.

For professional advice and product recommendations on turf disease, weeds, pests and grass seed, please contact the Grass Guys.

Follow us on social media

01328 700600 | sales@collier-turf-care.co.uk | www.collier-turf-care.co.uk

COLLIER TURF CARE Specialists COLLIER SPORTS

NUTRITIONAL CHART

Aquatrols Barclay's BARENBRUG AICL Vitex

Nutrients

Soil Texture Chart

Grass Nutrient Deficiencies

Nitrogen Cycle

Effects of pH on Nutrient Availability

Spreader Settings

Nutrient Inputs

For professional advice on plant nutrition or for soil, water and turf disease testing and bespoke nutritional programmes, please contact our Turf Care specialists team.

Get our Grass Guys Weekly Disease Blog delivered to your inbox every Monday! Email sales@collier-turf-care.co.uk or speak to your Local Area Technical Sales Representative.

Follow us on social media

01328 700600 | sales@collier-turf-care.co.uk

£10 ex. VAT each or FREE to account customers

Spray Dye Indicators

Aquatrols Blue Spray Dye

A high quality blue dye allowing the operator to apply the product both accurately and uniformly.

4 ltr Mix 100 - 250 ml in 100 litres of spray solution

ICL ColourPro

Advanced spray pattern indicator to assist spraying and minimise spray drift.

1 ltr Mix 1 - 2.5 litres in 1,000 litres of water

Prestige Super Blue Spray Dye

A unique blue water soluble spray designed to highlight sprayed areas, therefore reducing spray overlap or missed areas.

1 ltr Mix 200 - 500 ml in 200 litres of spray solution

Also available in 10 ltrs

Prestige Super Green Spray Dye

A unique green water soluble spray designed to highlight sprayed areas, therefore reducing spray overlap or missed areas.

1 ltr Mix 200 - 500 ml in 200 litres of spray solution

Also available in 10 ltrs

Turf Pigment

ICL Ryder

Highly concentrated and stable green pigment designed for use on Managed Amenity Turf to improve its appearance and help protect against UV radiation and high light intensities.

1 ltr Mix 0.75 - 2 litres in 250 - 500 litres of water



ICL ColourPro



Prestige Super Blue Dye



Prestige Super Green Dye



ICL Ryder

Spray Dye Indicators

Spray dye indicators are an essential part of the spraying operation. Whether using a herbicide, fungicide, growth regulator, liquid fertiliser or iron product, it is essential that you apply the product both accurately and uniformly. Spray dyes help to indicate any missed or overlapped areas and will also identify blocked or damaged spray nozzles. Inaccurate spraying particularly with overlapping will increase the cost of chemicals and may also lead to scorch. Missing areas will mean that the pest, weed or disease will not be controlled.



Aquatic Products

Barclay Gallup Biograde Amenity

Glyphosate.

A non irritant 360 g/ltr translocated glyphosate herbicide for the control of both aquatic emerged and floating weeds. This is the only chemical legally allowed for use in waterways but permission must be obtained from the environment agency.

5 ltr Coverage various MAPP No. 17674

ICL Pro Crystal

A fast-acting aquatic algicide for use in static and slow moving water. It improves water clarity and controls swimming/floating unicellular and filamentous algae. Hydrosoluble single dose sachets make application easy.

Bucket (9 x 454 g sachets) Application rate various

Before using weedkillers in waterways you should consult the environment agency and must obtain their agreement before using the product.

Use plant protection products safely. Always read the label and product information before use.



Spraying Aids

All Clear Extra

A highly effective liquid cleaner to use after application of any amenity chemicals.

General cleaning mix 500 ml with 100 litres of water

5 ltr

Barclay Assist

Assist is a blend of water conditioning agents and acidifiers. It removes carbonates and bicarbonates and modifies pH of spray solutions.

Mix 62.5 ml with 25 litres of spray solution

Mix 250 ml with 100 litres of spray solution

(0.25% of total spray volume)

5 ltr

Barclay Stamina

Specially developed for the industrial vegetation and amenity contractors. Stamina is to be used where an improvement in the uptake and efficacy of approved three way selective turf herbicides is required.

Mix 150 ml with 100 litres of spray solution

3 ltr

ICL Phixer

Specialist sprayer water conditioner with a built-in pH colour indicator which turns pink when the water has achieved the ideal pH range.

5 ltr Pack coverage various

ICL Spotless

Spray tank cleaning agent and general purpose cleaner.

Mix 250/500 ml with 100 litres of water

5 ltr

NoMix Universal Cleaner CDA

To clean NoMix CDA 700 series compact lances. Ready to use, quick and safe it keeps your NoMix lance clean and avoids blockages.

4 x 750 ml

Tank and Equipment Cleaner

A highly effective cleanser for use after application of any amenity chemicals. As well as being a general cleaner it can also be used to clean stubborn long term stains. Use to clean tanks, booms, hoses, filters and nozzles.

General cleaning mix 50 g with 50 litres of water

Stubborn cleaning mix 30 g with 10 litres of water

500 g

Trail Trax Boutmarker

Trail Trax Boutmarker is a 100% proprietary liquid blend of surfactants. It is a superior spray boutmarker and it produces a high quality, thick-bodied long lasting foam.

Mix 1 litre with 100 litres of spray solution

3 ltr



All Clear Extra



ICL Phixer



ICL Spotless



NoMix Universal Cleaner



Trail Trax Boutmarker



Prestige Spraying Aids

Prestige Super Penetrant

An organosilicone penetrant specifically designed for tank mixing. It ensures the maximum penetration of the chemicals down in to the rootzone especially where a thatch layer is present.

Mix 25 ml with 25 litres of spray solution

Mix 100 - 200 ml with 200 litres of spray solution

1 ltr

Prestige Super pH Buffer

A water conditioner and buffering agent. It enhances the efficacy of chemicals particularly when the water pH is above 7.

Mix 62.5 ml with 25 litres of spray solution

Mix 250 ml with 100 litres of spray solution

1 ltr

Prestige Super Recovery (AdgiFe)

Is a registered adjuvant designed to be added to fungicides and herbicides to assist in the recovery of the grass.

- Fully tank mixable
- Contains amino acids, trace elements and surfactants
- Contains 2.4% ferric iron to provide a visual green up
- Green up masks the blackening of the weeds
- Surfactant contains a sticker and spreader
- Surfactant enhances efficiency of the iron
- Improves the mobility of nutrient products within the tank mix
- Improves rain fastness

5 ltr

Pack coverage 5,000 sq.m

AD No. A0797

Prestige Super Sticker

Super Sticker should be used where an improvement in the uptake and efficacy of approved three way selective turf herbicides is required. It ensures maximum effect at lower dose rates for the control of broadleaved weeds and makes the chemicals more rainfast as well.

Mix 35 ml with 25 litres of spray solution

Mix 150 ml with 100 litres of spray solution

1 ltr

Prestige Super Tank Cleaner

Tank cleaner is a specially formulated liquid which removes pesticides, deposits and other debris including oily substances from tanks, booms, hoses, filters and nozzles.

1 litre is sufficient to clean a 200 litre tank

5 ltr

Prestige Super Tank De-foamer

Use when necessary to reduce foaming in the spray tank, this should be done when the spray tank is at least half full and before foam overflows the tank chamber.

Use one squirt in 100 - 200 litres of spray solution

1 ltr



Super Penetrant



Super Recovery



Super Tank Cleaner



PRESTIGE[®]



Sprayers & Spray Equipment



TurfGuard Pro Plus Professional Sprayer

TurfGuard Pro Plus Professional Sprayer

This unique, proven pedestrian sprayer now features a new tubular frame, ball bearing wheels and revised electrical charging point. This unique 25 litre electric sprayer with removable tank, battery and battery charger is now easier to assemble and maintain. The 3 nozzle boom comes complete with 2 sets of nozzles, and is suitable for professional users such as bowls clubs, cricket squares, golf and sports clubs.



TurfGuard Spare Tanks

spare tank complete with fittings.

25 ltr

TurfGuard Spare Nozzle Sets

Standard red nozzles

Pneu (bubble jet) red nozzles

Pack of 3

Pack of 3

Spares available for the newer models of TurfGuard Pro Plus Sprayer. Contact your local area representative or our office for any enquiries on spares.

Nomix 700 Weed System Lance

The Nomix CDA lance is easy to use, fast and more convenient than traditional knapsack systems. Use with Nomix range of Safeguard CDA chemicals which eliminates the need for mixing and measuring.

Syngenta Hardi Nozzle Adapters

pack of 13

Syngenta Boom height indicator

Syngenta Podcast / DVD

Syngenta Nozzle application set

Syngenta Foliar XC Nozzle

Launched in 2014, these nozzles ensure extra coverage of turf surfaces with improved results of all applications.

Soil XC 08 White Nozzles

pack of 13

Foliar XC 04 Red Nozzles

pack of 13

Foliar XC 25 Lilac Nozzles

pack of 13



Syngenta XC Nozzles

EarthWay S15 Sprayer

The ultimate compact push sprayer featuring EarthWay's patented gear pump which is driven by the wheels. The S15 is a boomless sprayer and is fitted with a widespray TF-VP nozzle which can spray from 60 cm to 1.5 m.

22 ltr wheeled sprayer

Knapsack Sprayers

Magnum Pro Series Sprayers

Magnum 1000 Commercial sprayer

15 ltr

Magnum 2000 Professional sprayer

15 ltr

Spare parts for Magnum sprayers are available.

Sundry Spraying Equipment

Measuring jug (calibrated)

2 ltr

ICL Drum pump for 200 ltr drums

Further nozzle information available on page 80 showing nozzle colours, sizes and outputs.

Applicators

Injector Dos

1 ltr

InjectorDos Pro is an injection applicator with the facility to 'dial-in' a pre-determined metered volume of spray liquid to be dispensed. The InjectorDos Pro is suitable for injecting herbicide (usually one containing glyphosate e.g Roundup Pro Biactive), into the stem of weeds with hollow stems such as Japanese Knotweed, Giant Hogweed and Horsetail.

Weedball

828 ml

An innovative liquid application system for easy, economical and efficient weed control.

MAGNUM

SPRAYERS

Best Value
Professional
Knapsacks on
the UK Market
Today



Magnum 1000

15 Litre Tank
Internal Piston pump,
Max 150 Psi
Agitation paddles to
improve wettable powders
Viton no leak seals
Poly lance
Powder coated chassis
Padded comfort straps

Encapsulated seal for no
drips
Fully perforated filter basket
Fully serviceable, replace
seals in less than 10
minutes



Magnum 2000

15 Litre Tank
Internal Piston pump,
Max 150 Psi
Agitation paddles to
improve wettable powders
Viton no leak seals
Stainless steel lance
Stainless steel chassis

Padded comfort straps with
back padding
Encapsulated seal for no
drips
Fully perforated filter basket
Fold Away handle
Fully serviceable, replace
seals in less than 10
minutes

Safety Equipment

Safety Wear and First Aid

| | |
|---|--------------------|
| North N7700 Twin Filter Half Mask Respirator Each | |
| North N7500 Filter Cartridges For N7700 respirator 2 per respirator. Pack of 2 | |
| 3M 8835 Disposable Respirators Pack of 5 | 116304 |
| Pulsafe Clearways Brow Guard CB20 Headband with ratchet for a comfortable fit. No fitted visor | 340100 |
| Pulsafe Clear Acetate Visor CV84a 8 inch visor for CB20 | 340700 |
| Microchem 3000 Coverall & Hood Is one of the lightest and most comfortable chemical protective spray suits on the market today. Featuring double zip closure and elasticated hood, wrists and ankles, it is a yellow light weight spray suit (re-usable). | |
| S, M, L, XL, XXL | 1775200 |
| Microchem 4000 Coverall & Hood Green heavy weight spray suit, new top barrier layer increases chemical repellence (re-usable) | |
| S, M, L, XL, XXL | 1783007 |
| Chemical Boilersuit PVC Coated M, L XL | 1843600 1843700 |
| Gloves Buffalo Sp/Leather Rigger Pair | 1255100 |
| Gloves Spray Nitrile (chemicals) Pair | 001001 |
| Gauntlet Nitrile (chemicals) Pair | 1438510 |

First Aid

| | |
|--|--------|
| Standard Kit Per kit (10 Persons) | 443000 |
| Combination First Aid/Eyewash Kit Per kit (10 Persons) | 4F0700 |
| Eye-Wash Station Per station | 380100 |
| Eye-Wash Refill 500 ml | 380200 |

Records

| | |
|---|------|
| Chemical Recording Literature | |
| Spray chemical usage duplicate record refills | (10) |
| Spray stock record sheets | (10) |

Chemical Storage



Specialist Safety Equipment

Chemical Storage Units

Chemsafe

With sufficient capacity to store 200 litres of liquid chemicals or 200 kg of granular pesticide. Manufactured from 2 mm steel with drain point secure lock and gas filled stays for assisted opening and closing.

200 ltr capacity

Chemical Storage Safe

| | |
|-------------------------|---------|
| 350mm x 350mm x 300mm | 15 ltr |
| 350mm x 600mm x 300mm | 25 ltr |
| 700mm x 900mm x 600mm | 150 ltr |
| 1000mm x 1400mm x 950mm | 400 ltr |

Fuel Storage Safe

500mm x 750mm x 400mm

Fuel storage boxes, designed for the purpose of the safe storage of fuel. The boxes can be fixed to the floor of a van or building and are ideal for all fuel storage needs.



Fuel Storage Safe



ICL Fertiliser Spreaders

ICL Accupro 2000

A new improved rotary spreader with larger Turf Saver pneumatic wheels. Patented Helical Cone for a uniform, consistent spread pattern.

Rotary 25 kg capacity

ICL SR 2000

All features as Accupro 2000 plus new and improved larger diameter stainless steel frame. Positive on-off side deflector provides effective product delivery control.

Rotary 25 kg capacity

ICL SS2 Dropspreader

Stainless steel frame, hopper and fasteners provide outstanding durability and corrosion resistance. Now with larger Turf Saver pneumatic wheels for easier operator use.

Dropspreader 50 kg capacity

ICL Accu Green Dropspreader

Ideal for distributing grass seed or (uncoated) fertiliser over large lawns. This spreader has a plastic hopper that can hold enough fertiliser (32 kilos) for up to 950m².

Dropspreader 32 kg capacity

Ev-n-Spred Fertiliser Spreaders

EV-N-SPRED FLEX-SELECT

With continual research and development, innovation and design EarthWay have become leaders in the pedestrian broadcast spreader market. The new revolutionary EarthWay Ev-n-Spred FLEX-SELECT range is engineered to provide a unique spreader experience enabling users to benefit from one spreader capable of spreading a wide range of materials accurately, economically and effectively.

Intelligent design of the NEW delivery systems provides up to a 50% increase in the spreading width, making the FLEX-SELECT the most efficient spreader EarthWay have ever produced.

Ev-n-Spred F80PD Professional

Professional high quality new flex-select options for golf courses, sports and football pitches. Has strong tubular professional frame with comfort handlebar. Comes complete with standard output fertiliser red 3-hole drop tray. (Optional high output sand & salt blue tray and optional low output grass seed black trays are available).

Rotary 36 kg capacity

Ev-n-Spred F80D Commercial

Commercial high quality spreader with diamond chassis. New flex-select options for large gardens, sports and football pitches. Comes complete with standard output fertiliser red 3-hole drop tray. (Optional high output sand & salt blue tray and optional low output grass seed black trays are available).

Rotary 36 kg capacity



ICL Accupro 2000



ICL SS2 Dropspreader



Ev-N-Spred F80PD Professional



Ev-n-Spred Spreaders

Ev-n-Spred 2040pi Salt Spreader

For spreading salt, this machine features a heavy duty strengthened gearbox with large pneumatic tyres and an extra large hopper.

Rotary 30 kg capacity

Ev-n-Spred 2600A Plus

Ideal for the smaller garden and even a small bowling green, this broadcast spreader has a medium sized plastic hopper, pneumatic wheels and a solid metal on/off linkage.

Rotary 18 kg capacity

Ev-n-Spred 2050P

Ideal for the larger garden this broadcast spreader has pneumatic tyres (can be used on rugged ground), commercial heavy duty gear box and will apply all granular fertilisers.

Rotary 36 kg capacity

Ev-n-Spred 2150

This semi professional broadcast spreader is ideal for use on a bowling green, it has large pneumatic tyres and an adjustable handle bar height. It has a large plastic hopper, heavy duty frame and precision rate control lever.

Rotary 23 kg capacity

Ev-n-Spred 2750

A handheld semi-professional spreader with shoulder strap. This hand cranked broadcast spreader is for those difficult areas where a wheeled machine cannot go.

Rotary 9 kg capacity

Ev-n-Spred M80ECM

The M80ECM is the largest 12v broadcast Ev-n-Spred spreader available today. With a 112 kg heavy duty, rust proof hopper and sturdy load bearing stainless steel chasis, this machine is designed to bolt to any vertical or horizontal surface.

Rotary 112 kg capacity

Vitax Supaturf Spreaders

Supaturf SSR50 Spreader

Designed for the efficient, cost effective and accurate application of granular and powder fertilisers, and other dry treatments to sports pitches and managed amenity turf.

Rotary 25 kg capacity

Supaturf SSD 60 Drop Spreader

A simple and economic solution to salt spreading. This spreader is ideal for pathways, small areas, and suitable for rock salt, processed salt and Vitax Ice Free.

27 kg capacity



Ev-n-Spred 2040pi Salt Spreader



Ev-n-Spred 2150



Vitax Supaturf SSD 60 Drop Spreader



Line Marking Liquids

Prestige Col-Mark Product Guide

The quality properties of the Prestige Col-Mark liquids allow fast, clean and easy dilution into clean water. Prestige Col-Mark Premium is also suitable for use on shale as well as many other surfaces. The quick drying properties enable the liquid to create a durable bright line that is rain resistant.

Prestige Col-Mark Premium

Premium grade line marking liquid offers excellent brightness and performance on a wide range of surfaces. Recommended rates are dilute up to 1 part paint and 9 parts clean water. This is depending upon pitch conditions or line requirements.

- Free-flowing formula
- Outstanding white performance
- Suitable for multi surface types
- Ideal for spray marker machines
- Excellence performance over several weeks

12.5 ltr drum

Prestige Col-Mark Sport

Col-Mark Sport grade has been designed for use when a balance has to be struck between performance and cost. Ideal for a weekly marking of sport pitches. The recommended rates are dilute up to 1 part paint and 6 parts clean water. This is depending upon pitch conditions or line requirements.

- Outstanding white marking product
- Cost effective performance
- Ideal for municipal owned pitches
- For use with spray markers
- Excellence weekly performance

12.5 ltr drum

Prestige Col-Mark Transfer

Col-Mark Transfer is the perfect compound for the traditional box/transfer wheel marker. Can be used neat or diluted up to 1 part paint and 3 parts clean water. This is depending upon pitch conditions or line requirements.

- Cost effective in use
- High whiteness achieved
- Adheres to grass leaf
- Box/transfer wheel marker use only
- For frequent applications

12.5 ltr drum

Aerosols



Topline Stadia Colours

Use on grass surfaces this paint can be used in both transfer wheel and spray machines. It is available in a variety of colours and can be used to create logos and advertising.

Blue, green, red and yellow 12.5 ltr

Permanent Marking Fluid

Paint for hard surface marking such as playgrounds and car parks. Prices on different colours available upon request.

Marking Chalk White

Traditional powder mixed with water for applying through a transfer wheel marker. Mix 2 kg per 1 ltr of water.

25 kg

Aerosols

These aerosols can be used inside or outside, on grass or hard surfaces of all types. They are designed to produce strong and lasting marks and lines with economy and safety. Aerosols are quick and easy to use and are usually touch dry within 15 - 30 mins.

Prestige Aerosols

White, yellow, red and blue

750 ml

Supaflush Topline

Supaflush is a specially formulated surfactant which greatly assists in the process of thoroughly cleaning and protecting the internal components on Topline spraying machines. Mix 50 ml with every 2 litres of water.

1 ltr

Concentrate Required at Different Dilution Rates

| | | | | | | |
|----------------------|---------|---------|---------|---------|---------|---------|
| Small Pitch (585 m) | 1:4 | 1:5 | 1:6 | 1:7 | 1:8 | 1:9 |
| Slow Speed 1.5 mph | 2.3 ltr | 2.0 ltr | 1.7 ltr | 1.5 ltr | 1.3 ltr | 1.2 ltr |
| Medium Speed 2 mph | 1.8 ltr | 1.5 ltr | 1.3 ltr | 1.1 ltr | 1.0 ltr | 0.9 ltr |
| Medium Pitch (665 m) | 1:4 | 1:5 | 1:6 | 1:7 | 1:8 | 1:9 |
| Slow Speed 1.5 mph | 2.7 ltr | 2.2 ltr | 1.9 ltr | 1.7 ltr | 1.5 ltr | 1.3 ltr |
| Medium Speed 2 mph | 2.0 ltr | 1.7 ltr | 1.4 ltr | 1.2 ltr | 1.1 ltr | 1.0 ltr |
| Large Pitch (745 m) | 1:4 | 1:5 | 1:6 | 1:7 | 1:8 | 1:9 |
| Slow Speed 1.5 mph | 3.0 ltr | 2.5 ltr | 2.1 ltr | 1.9 ltr | 1.7 ltr | 1.5 ltr |
| Medium Speed 2 mph | 2.2 ltr | 1.9 ltr | 1.6 ltr | 1.4 ltr | 1.2 ltr | 1.1 ltr |

| Products | WI | HP | WR | S | Dilution Rates | | Pack Size |
|----------------------------|-------|-------|----|---|----------------|------------|-----------|
| | | | | | Wheel | Spray | |
| Prestige Col-Mark Premium | 88.0% | 95.5% | 8 | 4 | neat to 1:4 | 1:4 to 1:9 | 12.5 ltr |
| Prestige Col-Mark Sport | 85.0% | 91.0% | 8 | 3 | neat to 1:2 | 1:3 to 1:6 | 12.5 ltr |
| Prestige Col-Mark Transfer | 65.0% | 95.0% | 35 | 3 | neat to 1:3 | N/A | 12.5 ltr |





AID TURF RECOVERY

A comprehensive range of fertilisers developed for all types of sports and amenity turf

Enhance Autumn and Winter granular 5-2-15 including Amino-Sorb and Bacillus Subtilis

Enhance Liquid Autumn and Winter 4-1.5-12 including Amino-Sorb : liquid and granular fertilisers including a full application of Amino-Sorb.

Amino-Sorb R : Essential amino acids for a strong healthy sward to fight disease.

Seaturf Iron Extra : Turf hardener increasing disease resistance.

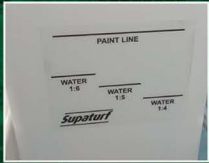
Swardphite : Contains phosphites for a healthy sward.

Early Start : Dew dispersant.



TFS25 (Tank Free System)

Tank free system complete with 2 x 12.5 litre drums, one having dilution marking and one for clean water to flush the system once finished. Robust, perfectly balanced and effortless to operate. Reduces waste, an easily flushed system. Simple to use marking guides can be adjusted from 50mm to 120mm.



TXE353 and TXE606

The battery powered TXE, already one of the world's most popular line markers, has been upgraded with a series of design enhancements which improve performance and operation still further. Available with a choice of battery packs, the TXE come as standard or with an integrated flush tank.

TXE606 - 18 amp/hr battery
TXE353 - 7 amp/hr battery



Accessories

Marking Disc

Ensures the sharpest lines. Just a few minutes to fit. Fully adjustable to change line widths.



Athletics Attachment

Produces three parallel lines in a single pass. Ideal for producing athletic track lines.



Spray Boom

Converts your line marking machine into an efficient power sprayer.



Marking Out Pins

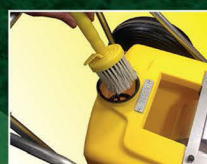
Purpose-designed for line marking. Double-point to secure in wet soil. Tread bar to help penetrate firm ground.



Briteliner Arrow

The revolutionary transfer-wheel marking machine. Once set, the lighter, tougher Arrow will produce the same high quality line time after time. The ideal choice of machine when budgets are restricted but also the perfect tool creating stand-out lines for big games at major venues.

Range of wheel width options available: 50mm, 75mm, 100mm and 120mm.



Line Marking Equipment

BriteLiner Arrow

A completely re-designed and re-engineered transfer wheel line marker. Lighter, tougher, easier to use and clean, this state of the art machine actually costs less than the previous version.

75 mm wheel 24 ltr capacity
100 mm wheel 24 ltr capacity
125 mm wheel 24 ltr capacity

Vitax Aerosol Applicators

These applicators are for use with the Prestige range of aerosols.

Aerosol GUR 2 wheeled applicator
Aerosol Supermarker Pro 4 wheel

The New TXE 353 and 606 Models

For many years, TXE line marking machines have been recognised as the industry standard. New in 2017, the TXE 353 and 606 machines offer even greater functionality and performance, combined with simplified maintenance and easier cleaning.

TXE353 Model

25 litre tank, 2 hour rechargeable battery (enough for approximately 6 pitches)

TXE353 Pro Model

Same as the 353, but complete with factory fitted 2.5 litre flush tank, with a back to tank system.

TXE606 Model

25 litre tank, 5 hour rechargeable battery (enough for approximately 15 pitches)

TXE606 Pro Model

Same as the 606, but complete with factory fitted 2.5 litre flush tank, with a back to tank system.

TFS25 (Tank Free System)

New TFS25 line marking machine is robust, efficient and effortless to operate. Comes with two drums, the first for marking liquid and second for clean water. This will flush the system once you have finished marking.

Topline TXE Flush Tank Kit Mk2

For TXE 252 and 505 models. This allows you to flush the paint filter, pump and spray nozzle with clean water without removing the paint.

Flush tank

Topline Marking Attachments

These attachments fit all the TXE line marking machines.

Front marker attachment
Athletic marker attachment

Spare parts are available for all the marking machines we sell, please ask for details.

Turf Care & Golf Course Equipment

Aeration and Seeding

The Weasel BMS
The Hedgehog BMS
The 'Wentworth' wonder tool BMS

BMS Telescopic Dew Switch

New improved tip complete with anti-wear sleeve and stop with aluminium shaft and fibreglass rod for removing dew. No screw thread which breaks the fibreglass rod.

Big Banana Dew switch complete BMS

Big Banana Dew spare switch BMS
Dew-Turf switch standard spare BMS

Cricket Crease Marking Frame

Fibreglass Cricket crease marking frame BMS

Dragbrushes

Dragbrush 6 foot wide CMW

Levelawns

Levelawn 36 inch Greenkeeper BMS
Levelawn 40 inch De-luxe BMS
Levelawn 48 inch Superub BMS

Seed Slotters

Rotary hand seed slotter CMW
Static seed slotter BMS

Specialist

Dew brush 3 m Big Dewie CMW
Dew brush 3 m Folding CMW
Roller squeegee 1 m CMW

Top Dressing Shovels

Ideal for quickly moving light materials such as sand and loose soil. The large pans allow you to shift up to twice as much as conventional shovels, yet they are approximately half the weight.

Aluminium square mouth top dress shovel CMW
Snow shovel 45 x 45 cm BMS

In addition CTC supply golf furniture from a variety of manufacturers including Amtech Range, BMS, CMW, Pinseeker, and TJ Golf. Contact us for more details.



Rakes

Aluminium Landscaper Rake

Reinforced lightweight 30 inch rake fitted with 18 x 3 inch teeth, complete with hardwood handle.

Landscape rake RK3820

Bulldog Springbok

Bulldog Springbok 9128 complete with handle

Chelwood Polypropylene

Complete with handle

16P polypropylene 25 inch general purpose

32P polypropylene 25 inch self cleaning

Chelwood Steel

Complete with handle

18E steel 28 inch wide landscaper rake

18K steel 22 inch multi purpose self cleaning

18S steel 28 inch course rake for hard packed soil

Wooden Hay Rake

The original quality wooden bulldog hay rake.

Hose Pipes

Tricoflex Hoses

3-layer reinforced yellow hosepipe which ensures superb kink resistance.

12.5 mm x 50 m

19 mm x 50 m

25 mm x 50 m

12.5 mm x 100 m

19 mm x 100 m

25 mm x 100 m

Hose Fittings

Brass hose end coupling 12.5 mm 19 mm 25 mm

Brass male coupling 12.5 mm 19 mm 25 mm

Brass female coupling 12.5 mm 19 mm 25 mm

Brass blanking cap 12.5 mm 19 mm 25 mm

Brass jubilee hose clamp 12.5 mm 19 mm 25 mm

Irrigation

As well as the standard products we can supply a complete range of sprinkler heads, on sleds, tripods or standpipes to suit your own requirements.

We also offer a complete irrigation design and installation service tailored to your needs. Prices on application.

Tricoflex hosepipe sizes

12.5 mm = 1/2 inch, 19 mm = 3/4 inch, 25 mm = 1 inch

Irrigation & Sprinklers

Sprinklers

Hozelock Sprinkler Hose

12.5 mm x 7.5 m

12.5 mm x 15 m

Sprinkler Heads

Brass male connection 3/4 inch

Sprinkler Head Complete with Base

Metal sled base with brass sprinkler head complete with geka fittings. IR3633

Self Travelling Sprinklers

Hose Trolley (Heavy duty)

Carries up to 120 m x 19 mm or 80 m x 25 mm hose pipe, comes complete with quick couplings.

National Walking Model B3

Heavy duty 2 speed model for estates and parks covers 6 - 12 metres per hour, spraying width up to 15 m wide.

Pope Water Tractor

Single speed small garden model covers area approximately 30 m long x 10 m wide.

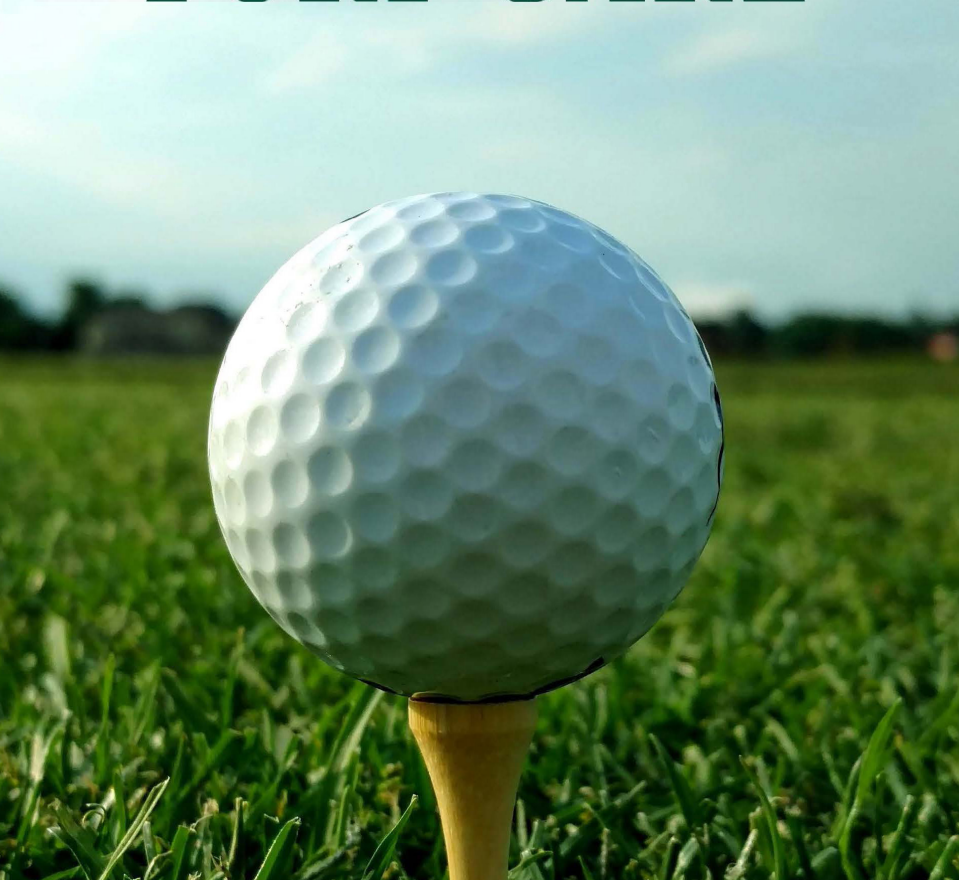
Perrot Roll Cart Travelling Sprinkler

The Perrot Roll Cart travels and irrigates on its own, used mainly for large sports fields, football pitches and large gardens. Travelling speed 10 - 20 metres per hour, with irrigation 120 m long x 28 - 36 m wide.



Hose Trolley (Heavy Duty)

COLLIER[®] TURF CARE



Dumpy Bags

CTC Tru-Turf Top Dressing

A very high quality screened and sterilised medium sand/Norfolk loam top dressing for bowling greens. This easily spreadable mixture has a pH of 7.0 (which is neutral). It is kiln dried, sterilised free flowing top dressing that can be spread through a mechanical dresser.

Dumpy Bag

FTTD

POA

CTC Ornamental Bark

Is produced from pine and is typically sized between 8 and 35mm. It is suitable for decorative flower beds and borders, also suppressing weeds and aiding moisture retention.

Dumpy Bag

Soil Org

POA

CTC Norfolk Fen Soil

A rich dark top soil with a low pH value (6-6.5). Screened and shredded the soils organic nature will help promote microbial activity and encourage root development.

Dumpy Bag

SOIL

POA

CTC Peat Free Compost

A 100% recycled, environmentally friendly peat free compost. This is a superb multi-purpose compost ideal for improving the physical, chemical and biological characteristics of soil.

Dumpy Bag

COMP

POA

CTC Natural Turf Sports Sand

A moist sports sand for use on winter sports pitches.

Dumpy Bag

SAND

POA

CTC Woodchips

This is a cost effective pine based 5 - 40 mm woodchip for suppressing weed development and aiding moisture retention.

Dumpy Bag

SOIL ORGS

POA

All the above products are available in both dumpy bags and bulk deliveries, discounts are available based on number of bags or size of bulk delivery. The dumpy bag is sold based on approx. 1 tonne for sands, top dressings and soils and 750 litres for barks and composts.

Top Dressings and Composts

Bulk and Bagged Deliveries

Within our **existing trading area** we are able to offer a wide range with prices quoted against specification, quantity and delivery point.

- | | |
|--------------------------------|--|
| • Bark products | A complete range including play grade, ornamental and woodchips. |
| • Fine turf top dressings | Varieties of sands, fen and other soils. |
| • Economy dressings | For tees, aprons and fairways. |
| • Pathway aggregates | Redgra and other options available |
| • Rootzone mixes | Any mix as specified for construction work. |
| • Soils | Screened, sterilised or unsterilised, or as dug. |
| • Sedge and sphagnum peats | Various grades including Shamrock Irish peat for USPGA spec. greens. |
| • Dried sands and bunker sands | Various grades and colours. |
| • Cricket wicket dressings | A selection with varying clay content. |
| • Tennis court dressings | For grass and hard courts. |
| • Specialist sports surfaces | For top dressings, surface work and construction base materials. |
| • Cockle shells | High quality from East Anglia's beaches. |
| • Sands | Various grades and qualities for soil amelioration, golf bunkers, top dressings. |

Composts (quantity discounts available)

| | |
|---|---------------|
| Humax Multipurpose Compost | 75 ltr |
| Humax Potting Basket and Tub Compost | 75 ltr |
| Humax John Innes Seed | 25 ltr |
| Humax John Innes No.2 | 25 ltr |

CTC Tru-Turf For Bowls and Golf

A very high quality screened and sterilised medium sand/Norfolk loam top dressing for bowling greens. This easily spreadable mixture has a pH of 7.0 (which is neutral).

25kg

Cricket Wicket Dressings

A comprehensive range of both sterilised and unsterilised clay content dressings. All clay contents are approximate and may vary slightly from that shown.

| | | | |
|--------------------------|------------|--------------|--------------|
| County No. 1 | (32% clay) | sterilised | 25 kg |
| Club No. 2 | (30% clay) | sterilised | 25 kg |
| Kaloam | (31% clay) | unsterilised | 25 kg |
| Ongar Loam | (31% clay) | unsterilised | 25 kg |
| Ongar Loam Plus | (30% clay) | unsterilised | 25 kg |
| Super Surrey Loam | (28% clay) | unsterilised | 25 kg |

Kettering Loam For Tennis

Kettering loam 3 mm sterilised. **25 kg**

Sands

Astro Turf sand type 2EW **25 kg**

TPMC Tree Planting Compost Professional

A peat based planting compost with added NPK fertilisers and special additive giving long life wettability. **75 ltr**

Ornamental Bark

A high quality bagged ornamental spruce bark mulch
5 - 35 ml size **70 ltr**

Bulk loads of both TPMC and Bark are available subject to load size, delivery address and haulage charges.

**Quantity bagged discount prices are available on all top dressings and compost products.
Please contact your local Collier technical representative for prices.**



Landscaping Products

Germination Aids

Tildenet Grow Sheet

Heavy duty black germination cover with webbing and grommets. Life expectancy 10 years plus.

3.66 m x 5.00 m (cricket ends) each

3.66 m x 23.00 m (wicket length) each

Tildenet Grow Sheet

Economy black germination cover. Life expectancy 7 years plus.

3.66 m wide x 25 m each

3.66 m wide x 100 m each

Tildenet Economy Germination Sheet

White economy germination sheet with life expectancy 2 - 3 years.

4 m wide x 250 m each

8.5 m wide x 250 m each

Rubber Grass Mats

High quality rubber moulded mats measuring 1 m x 1.5 m x 23 mm. Ideal for outdoor ground cover and are resistant to all weather conditions.

Weed Control

Covertex Ground Cover

Covertex has a unique porous structure, allowing air, water and nutrients to pass through to the plant roots whilst preventing weed growth.

Landscape roll 1 m x 100 m each

Landscape roll 3.05 m x 100 m each

Landscape roll 5.15 m x 100 m each

Greenstakes Fixing Pegs

Flexible organic green ground stakes which are 100% biodegradable.

4" stake pack of 500

6" stake pack of 500

Plantex

Plantex from DuPont has a unique porous structure, allowing air, water and nutrients to pass through to the plant roots whilst preventing weed growth.

Landscape roll 2 m x 50 m each

Vitax Fixing Pegs

Complete with eyelets. Pack of 12

Wheelbarrows

Wheelbarrow

130 litre polypan steel frame wheelbarrow.

130 ltr capacity



Tildenet Grow Sheet



Rubber Grass Mats



Greenstakes Fixing Pegs



Wheelbarrow



Tree Ties

Rainbow 600 mm Buckle Tree Ties
Pack of 100 C203

Rainbow 600 mm Spiral Tree Guards
Pack of 250 C282

Landscaping Fertilisers

ICL Sierrablen Flora

Controlled release fertiliser for trees and shrubs in granular and tablet form.

ICL Landscaper Pro Tablets

Tablet 15 g x 467 15:9:9 + 3% MgO

7 kg bucket

ICL Sierrablen Flora (Enmag)

11:22:9 + 6% Mg.

This CRF slow release fertiliser for tree and shrub planting lasts approximately eight to nine months and can be used at any time during the growing season.

25 kg

Planting Aids

Tree Stakes

Creosote treated tree stake 1.8 m x 50/75 mm
Creosote treated tree stake 2.4 m x 50/75 mm

Galvanised Rabbit Netting

600 mm x 31 m x 50 m (BS)
1050 mm x 31 m x 50 m (BS)

Railway Sleepers

New Oak Sleepers

Available in either brown or green these are treated with CCA preservative which conforms to the latest regulations. Each sleeper weighs approx. 65 kg.

Length 2.44 m x width 200 mm x depth 100 mm

Reclaimed Sleepers

We can offer used, reclaimed hardwood railway sleepers, which are not impregnated with tar. Each sleeper weighs approx. 70 kg.

Length 2.59 m x width 250 mm x depth 150 mm

On both of these types of railway sleepers we can only guarantee two flat sides. Sizes of sleepers are subject to small changes depending on supplier. Please check before ordering.

Sleeper Grips

Tough, durable polyester resin sheets which are bonded and screwed down onto sleepers. This creates a safe, non slip surface.

Length 600 mm x width 150 mm x depth 4 mm



ICL Sierrablen Flora



Galvanised Rabbit Netting



Sleeper Grips



Salt Products

Ice Ban (Liquid Salt)

A fast acting liquid de-icer which is an environmentally friendly and non-corrosive alternative to salt.

Pack coverage 550 sq.m
10 ltr

Ice Melt

A fast acting granular de-icer which is an environmentally friendly and non-corrosive alternative to salt.

10 kg

Salt Bin

Yellow heavy duty impact resistant salt bin.
Large Heavy Duty 400 ltr capacity

Polyshovel 18"

18" poly shovel with wooden handle

Polar Tuff Scraper 36"

36" scraper with fibreglass handle

Polar Tuff Plough 39"

Bi-directional snow plough simple and easy to use.

Penguin Snoboss

A specially designed ergonomic snow shovel with a 19.5" wide head

Salt Granular (Broste De-icing) White

Non-staining white rock salt which is for use on car parks, footpaths, walkways, tee mats and driveways.

Application rate various
25 kg

Grit Salt

A traditional 50% brown rock salt mixed with 50% grit which is for use on roads, footpaths, driveways and car parks.

Application rate various
20 kg



Ice Ban (Liquid Salt)



Ice Melt



Polar Tuff Plough 39"



Polar Tuff Scraper 36"



Penguin SnoBoss



(Broste De-icing) White Salt



Drainage Products

Rainbow Rite Pavé Landscape

The most cost effective and simple installed pathway/car parking for general landscaping use. Made from 100% recycled UK materials and designed for strength. It is totally porous, will retain soil, grass and gravel without washout.

Size: 50 cm x 50 cm (56 m² per pallet)

Drainage Pipes

A full range of drainage pipes and accessories is available, prices on request

Polybed Sports Pitch/Golf Course Drainage

The installation of a sub-surface drainage system is imperative to ensure the longevity of sports fields and golf courses. Sports fields generally require a greater concentration of sub-surface drainage pipe, installed at shallow depths. Golf course fairways, bunkers and greens also require intensive irrigation and drainage.

Polyagg 3 m x 300 mm dia. FD1230
lightweight fill

Polybed 3 m x 300 mm dia. FD1231G
geotex wrapped with drainage pipe

Linking Collar FD 1206

Enviroflow Plank

Enviroflow is a macro-porous/ micro-porous matrix, unique drainage product manufactured solely from 100% waste plastics. It drains water very quickly but also retains essential water reserves.

Size: 1m (L) x 220mm (W) x 45mm (D)

Artificial Grass

Verde Teeturf

Is an artificial grass designed for teeing areas that allows the golfer to drive from any preferred position. This construction is superior to all other designs, allowing sand and rubber crumb to be brushed into the pile with absolutely minimal effort.

For more information on Verde Teeturf and other artificial grasses, please contact one of our technical representatives.



Polybed 3m



Enviroflow Plank



Polyagg 3 m x 300 mm dia.



Polybed Linking Collar

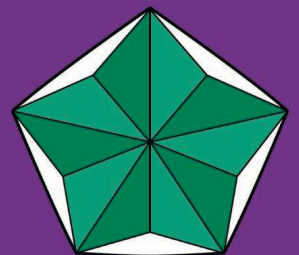


PRESTIGE BUNKER SAND LINER 250

- Designed for use in bunkers
- Prevents sand from being contaminated by the soil beneath the liner
- Improves drainage and aesthetics



The Prestige Bunker Liner is specifically engineered to be installed in bunkers to stop contamination from the soil beneath, whilst improving drainage down to the installed drains.



PRESTIGE[®]



Bunker Liners

Bunker Liners

Prestige Bunker Sand Liner 250

Specifically engineered to be installed in bunkers to stop contamination from the soil beneath whilst improving drainage down to the installed drains.

2 m x 50 m (100 sq.m)

Prestige Bunker Sand Liner Staples

6" heavy duty steel staples.

Pack of 500

Hy-Tex Terralys

Traditional bunker lining fabric LF1716

4.5 m x 100 m each

Measuring Tapes

Stanley Powerwinder Tape Measures

Open frame 30 m 3131851

Open frame 50 m 3131861

Open frame 100 m 3131871

Road Measuring Wheel

Accuracy Road Measuring Wheel 766449

Weight: 1.6 kg, supplied with nylon carrying case

Soil Samplers

Standard 1 inch soil sampler

Soil Profile Sampler (wedge shape)

Monitoring

Environmental Monitoring

Pocket Soil Thermometer

Professional Soil Moisture Meter

A water resistant heavy duty probe featuring and all-in-one easy operation, which has a range measurement of 0-100% moisture content.



Professional Soil Moisture Meter

Delta ML3 ThetaKit Soil Moisture Portable Kit

The ML3 ThetaKit provides greenkeepers and agronomists with a portable tool for highly accurate, near instantaneous measurement of moisture levels in soils and substrates.



Delta ML3 ThetaKit Soil Moisture Portable Kit

Nozzle Type & Output Information

Standard 110° Flat Fan Nozzle

| Code | Colour | Flow l/m @ 2 bar |
|----------|------------------------|------------------|
| 110SF01 | Orange | 0.40 |
| 110SF015 | Green | 0.49 |
| 110SF02 | Yellow | 0.66 |
| 110SF025 | Lilac | 0.81 |
| 110SF03 | Blue | 0.98 |
| 110SF04 | Red (Turfguard nozzle) | 1.31 |
| 110SF05 | Brown | 1.63 |
| 110SF06 | Grey | 1.96 |

Air Induction (Bubble Jet) Nozzles

| Code | Colour | Flow l/m @ 2 bar |
|----------|------------------------|------------------|
| 110PJ01 | Orange | 0.33 |
| 110PJ015 | Green | 0.49 |
| 110PJ02 | Yellow | 0.66 |
| 110PJ025 | Lilac | 0.82 |
| 110PJ03 | Blue | 0.98 |
| 110PJ04 | Red (Turfguard nozzle) | 1.31 |
| 110PJ05 | Brown | 1.63 |
| 110PJ06 | Grey | 1.96 |

Prestige Spring Summer Fine Turf:

- Fine Turf Traditional - 12:0:9
- Fine Turf Longevity - 14:2:6
- Fine Turf All Season - 6:6:12
- Fine Turf Initiate - 4:0:8
- Sure Start - 16:0:16

Prestige Organic:

- Fine Turf All Season - 5:3:8
- Microbial Organic Based TE - 8:0:0
- Microbial Organic Based TE (NO IRON) - 8:0:0

Prestige Powders:

- No.1 Lawn Sand - 4:6:0:0
- Standard Lawn Sand - 5:0:0
- No.1 Turf Hardener - 2:0:8

Prestige Sportsfield:

- Sportsfield Longevity - 12:2:10

Prestige Organic Sportsfield:

- TE Spring and Summer - 12:6:6



Available from

COLLIER
TURF CARE

PRESTIGE GRANULAR FERTILISER



TERMS & CONDITIONS

1. INTERPRETATION

1.1 Definitions. In these Conditions, the following definitions apply: "Business Day" a day (other than a Saturday, Sunday or public holiday) when banks in London are open for business.

"Conditions" the terms and conditions set out in this document.

"Contract" the contract between the Company and the Customer for the sale and purchase of the Goods in accordance with these Conditions.

"Customer" the person or firm who purchases the Goods from the Company. "Force Majeure Event" has the meaning given in clause 9.

"Goods" the goods (or any part of them) set out in the Order.

"Order" the Customer's order for the Goods, as set out the Customer's purchase order, the Customer's written acceptance of the Company's quotation, or overleaf, or as notified to the Company by email, telephone, fax or post as the case may be.

"Specification" any tailored specification for Goods that is agreed in writing by the Customer and the Company.

1.2 If you are dealing with the Company as a consumer no restrictions or limitations in these terms affect your legal rights in relation to Goods that are faulty or not as described. Advice about your legal rights is available from your local Citizens' Advice Bureau or Trading Standards office.

2. BASIS OF CONTRACT

2.1 These Conditions govern all transactions between the Customer and the Company or any division of it except as otherwise specifically agreed in writing by the Company.

2.2 The Order constitutes an offer by the Customer to purchase the Goods in accordance with these Conditions. The Customer is responsible for ensuring that the terms of the Order and any applicable Specification submitted by the Customer are complete and accurate.

2.3 Orders are accepted subject to stock availability. The Company reserve the right to suspend in part or full or cancel any Contract at any time should it not be able to fulfil the Contract. The Company shall use its best endeavours to notify the Customer within 14 days of receipt of an Order if it intends to reject or suspend the Order or any part of it.

2.4 Any samples, drawings, descriptive matter, or advertising produced by the Company and any descriptions or illustrations contained in the Company's catalogues or brochures are produced for the sole purpose of giving an approximate idea of the Goods described in them. They shall not form part of the Contract or have any contractual force.

2.5 A quotation for the Goods given by the Company shall not constitute an offer. A quotation shall only be valid for a period of one month from its date of issue. Quotations may be subject to alteration if there is any increase in the manufacturer's price.

3. DELIVERY

3.1 Delivery of the Goods shall be completed on the Goods' arrival at the Delivery Location. Delivery will be deemed to have occurred if it has been left by the delivery personnel in accordance with the instructions of the Customer. It is the responsibility of the Customer to ensure such location is secure and weatherproof.

3.2 Any dates quoted for delivery are approximate only, and the time of delivery is not of the essence.

3.3 The Company shall not be liable for any delay or failure in delivery of the Goods that is caused by a Force Majeure Event or the Customer's failure to provide the Company with adequate delivery instructions or any other instructions that are relevant to the supply of the Goods. If the Company fails to deliver the Goods, its liability shall be limited to the costs and expenses incurred by the Customer in obtaining replacement goods of similar description and quality in the cheapest market available, less the price of the Goods.

3.4 Kerbside deliveries only where no vehicular access exists, unless otherwise arranged with the Company prior to delivery. Bulk deliveries will be made to hard standing only, unless otherwise arranged prior to delivery at the Customer's risk and cost.

3.5 If delivery vehicles are required or requested to leave the public highway on to the property of the Customer to effect delivery then this is at the Customer's risk and cost.

3.6 Collection of Goods from the Company's warehouse can be made with prior arrangement. Identification documentation will be required to collect.

3.7 If Goods have not been received within 7 Business Days from the date of invoice the Company must be notified immediately in writing (otherwise no responsibility can be accepted).

4. QUALITY

4.1 In the event that the Goods are received damaged or have been delivered incorrectly this must be reported to the carrier immediately and to the Company in writing within 48 hours of delivery. Goods signed "not checked" or "unexamined" or similar will be regarded as having been given a clear signature. It is the responsibility of the Customer to check the Goods have been delivered correctly at the time of delivery and shall have no responsibility for wrongly delivered Goods unless it is notified to the Company within 48 hours of delivery.

4.2 It is the responsibility of the user to check the correct Goods have been delivered prior to use or application, and no responsibility will be accepted by the Company for wrongly delivered Goods once they have been opened or used.

4.3 Any advice, recommendations or programs provided by the Company for the use or application of any Goods are provided in good faith but are recommendations only and it is the responsibility of the Customer to read all labels and instructions provided with the Goods and to take professional advice and ask the Company for specific advice relating to the Goods if it has any queries as to the correct product to apply or the application process which should be followed. The Company accepts no responsibility for any loss as a result of any misapplication of any Goods. Responsibility for the application is with the Customer, who should comply with all statutory requirements and recommendations when dealing with the Goods.

5. RETURNS

5.1 No Goods will be exchanged or refunded unless they are in of inadequate quality in accordance with the full terms and conditions of the Company with the prior consent of the Company. The Company reserve the right to apply a minimum 20% handling charge on the price of any returned or exchanged Goods. Goods must be returned in their original condition.

5.2 Goods for return or exchange must be returned to the Company's place of business (or as directed by the Company) at the Customer's cost. If the Company collects or arranges collection of the Goods for return at the request of the Customer then the Company may invoice the Customer for all carriage costs. These charges do not apply where there is a justifiable complaint against the quality of the Goods and in which case any costs of return will be refunded by the Company.

5.3 Special Order Items For the avoidance of doubt, the Company will not offer any exchange or refund in respect of any Special Order Items (which are items produced specifically to customer's requirements and/or items not listed in our Product and Price Guide) unless such Special Order Items are defective.

6. TITLE AND RISK

6.1 The risk in the Goods shall pass to the Customer on completion of delivery.

Title to the Goods shall not pass to the Customer until the Company has received payment in full (in cash or cleared funds) for: a) the Goods; and b) any other goods or services that the Company has supplied to the Customer in respect of which payment has become due. Until title to the Goods has passed to the Customer, the Customer shall: a) hold the Goods on a trustee basis as the Company's bailee; b) store the Goods separately from all other goods held by the Customer so that they remain readily identifiable as the Company's property; c) not remove, deface or obscure any identifying mark or packaging on or relating to the Goods; d) maintain the Goods in satisfactory condition and keep them insured against all risks for their full price from the date of delivery; e) notify the Company immediately if it becomes subject to any insolvency event listed in the full terms and conditions; and f) give the Company such information relating to the Goods as the Company may require from time to time but the Customer may resell or use the Goods in the ordinary course of its business.

7. PRICE AND PAYMENT

7.1 The price of the Goods shall be the price set out in the Company's published price list in force as at the date of delivery. It is the Company's intention to maintain the prices in its catalogue for as long as possible, but the Company reserves the right to change its prices without prior notice. It is the responsibility of the Customer to enquire when placing an Order. Bulk (invoiced at weighbridge weight) supplies and large orders may be subject to special quotation upon request. Special offers and discounts may be applied from time to time at the discretion of the Company.

7.2 Orders of £250 and over (exclusive of VAT) include standard delivery costs within the United Kingdom except for items marked with * in the catalogue, which are subject to the extra carriage charges which will be notified to the Customer upon enquiry. A surcharge is made on carriage of football and rugby posts and other large items to destinations in Devon, Cornwall, Wales and Scotland and all destinations outside mainland U.K. Additional delivery charges may apply to the Scottish Highlands, islands and other remote areas or destinations outside mainland U.K., which will be advised upon notification of the delivery address by the Customer. Next Day delivery may be arranged at additional cost upon enquiry.

7.3 Orders below £250 will incur a surcharge of £20.00 (exclusive of VAT) due to administrative, handling and carriage costs. Orders placed on the website below £250 (exclusive of VAT) will not incur a surcharge, but will be charged carriage based on the weight and size of the items ordered. See website for more information.

7.4 Trade accounts (as notified to the Customer and marked as TD) will be charged delivery at cost or as quoted at the time of Order.

7.5 The price of the Goods is exclusive of amounts in respect of value added tax (VAT), unless stated otherwise. The Customer shall, on receipt of a valid VAT invoice from the Company, pay to the Company such additional amounts in respect of VAT as are chargeable on the supply of the Goods where applicable. (Please note grass seed is zero rated)

7.6 The Company may invoice the Customer for the Goods on or at any time after dispatch of the Goods. The Company will send additional monthly statements to its account customers.

7.7 The Customer shall pay the invoices on the following terms:

7.7.1 New Accounts and Approved Accounts without Credit Terms - payment with Order;

7.7.2 Approved Accounts with Credit Terms – Payment in full and in cleared funds within 21 days of despatch of Goods unless other credit terms agreed in writing with the Company.

7.7.3 Payment can be made by cheque, bank transfer or using most debit or credit cards (not including American Express or Diners Club). Payments by credit card will incur a surcharge of up to 3% of the total price (incl VAT). Time of payment is of the essence.

7.7.4 BACS payments should be made to Natwest Bank PLC, Sort Code: 53-61-38, Account No: 66503469.

8. LIMITATION OF LIABILITY - THE CUSTOMER'S ATTENTION IS DRAWN TO THIS CLAUSE

8.1 Nothing in these Conditions shall limit or exclude the Company's liability for death or personal injury caused by its negligence, or the negligence of its employees, agents or subcontractors (as applicable), fraud or fraudulent misrepresentation, breach of the terms implied by section 12 of the Sale of Goods Act 1979, defective products under the Consumer Protection Act 1987; or any matter in respect of which it would be unlawful for the Company to exclude or restrict liability.

8.2 Subject to clause 8.1:

8.2.1 the Company shall under no circumstances whatever be liable to the Customer, whether in contract, tort (including negligence), breach of statutory duty, or otherwise, for any loss of profit, or any indirect or consequential loss arising under or in connection with the Contract in excess of the sum of £10,000; and

8.2.2 the Company's total liability to the Customer in respect of all other losses arising under or in connection with the Contract, whether in contract, tort (including negligence), breach of statutory duty, or otherwise, shall in no circumstances exceed £100,000.

9. FORCE MAJEURE

Neither party shall be liable for any failure or delay in performing its obligations under the Contract to the extent that such failure or delay is caused by a Force Majeure Event. A Force Majeure Event means any event beyond a party's reasonable control, which by its nature could not have been foreseen, or, if it could have been foreseen, was unavoidable, including strikes, lock-outs or other industrial disputes (whether involving its own workforce or a third party's), failure of energy sources or transport network, acts of God, war, terrorism, riot, civil commotion, interference by civil or military authorities, national or international calamity, armed conflict, malicious damage, breakdown of plant or machinery, nuclear, chemical or biological contamination, sonic boom, explosions, collapse of building structures, fires, floods, storms, earthquakes, loss at sea, epidemics or similar events, natural disasters or extreme adverse weather conditions, or default of Company's subcontractors.

TERMS OF TRADING (January 2019) - Collier Turf Care Limited ("The Company") incorporating Collier Sports and Collier Lawn & Leisure, (Registered in England with no. 3613013) registered office Drury Square, Beeston, Kings Lynn, Norfolk, PE32 2NA.

An extract of the key terms and conditions of trade are set out above. All Goods are supplied subject to the full terms and conditions of the Company. Full terms are available from www.collier-turf-care.co.uk or copies can be provided upon request. E & OE. January 2019.

The Turf Care **Specialists**

- ✓ Biologicals
- ✓ Biostimulants
- ✓ Contract Spraying
- ✓ Fertilisers
- ✓ Fungicides
- ✓ Golf Equipment
- ✓ Grass Seeds
- ✓ Growth Regulators
- ✓ Insect/Grub Control
- ✓ Irons
- ✓ Irrigation
- ✓ Landscape Supplies
- ✓ Line Marking
- ✓ Moss Control
- ✓ Nozzles
- ✓ PPE
- ✓ Salt
- ✓ Selective Herbicides
- ✓ Spray Additives
- ✓ Sprayers
- ✓ Spreaders
- ✓ Top Dressing
- ✓ Total Herbicides
- ✓ Turf
- ✓ Wetting Agents
- ✓ Worm Cast Control



01328 700600



sales@collier-turf-care.co.uk



www.collier-turf-care.co.uk