

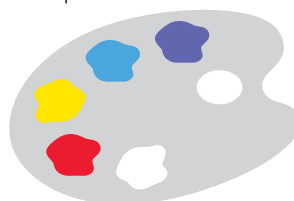
# Pro Flora 1 - Cornfield Annuals



**Corn Poppy**  
(*Papaver rhoeas*)

A traditional range of cornfield annuals, suitable for sowing in the spring or autumn, and providing a colourful show in the first year. Suited to a range of soil types, **Pro Flora 1** can be harrowed and re-sown in subsequent years, or alternatively, the grasses can be left and managed with either a 'long grass' policy or incorporated into a more regular mowing regime.

Colour palette:



## 20% Wild Flowers

- 40% **Corn Cockle**  
(*Agrostemma githago*)
- 20% **Cornflower**  
(*Centurea cyanus*)
- 10% **Corn Marigold**  
(*Chrysanthemum segetum*)
- 10% **Corn Poppy**  
(*Papaver rhoeas*)
- 15% **Night Flowering Catchfly**  
(*Silene noctiflora*)
- 5% **Corn Chamomile**  
(*Anthemis arvensis*)

## 80% Grasses

- 5% **Browntop Bentgrass**  
(*Agrostis capillaris*)
- 25% **Crested Dogtail**  
(*Cynosurus cristatus*)
- 20% **Hard Fescue**  
(*Festuca trachyphylla*)
- 10% **Sheep's Fescue**  
(*Festuca ovina*)
- 30% **Red Fescue**  
(*Festuca rubra*)
- 10% **Smooth Stalked Meadow Grass**  
(*Poa pratensis*)

Jan	Feb	Mar	Apr	May	Jun	Jul	Aug	Sep	Oct	Nov	Dec

Flowering Period

Flower height: **5cm to 1.2m**

Sowing rate: **5g/m<sup>2</sup>**

