

STEP[®] Hi-Mag

Special Trace Element Package



Product description

STEP Hi-Mag is a mini granular trace element package containing all the necessary nutrients for turf in an easy to apply form. Use whenever trace elements are low or deficient.

Product advantages

1. Contains all of the necessary trace elements for healthy turf growth.
2. Prevents trace element deficiencies.
3. Contains a high proportion of Magnesium to enhance turf health and colour.
4. Can be used on existing or newly sown greens, tees and sports fields.
5. Ideal supplement to existing fertilizer programmes.

Technology

Poly-S	Pace	TMax	MU ₂	SIK	Pro-Lite	STEP

Use

Green	Tee	Fairway	Sportsfield	Amenity
✓✓	✓✓	✓	✓✓	✓

Recommended Period for use

J	F	M	A	M	J	J	A	S	O	N	D
---	---	---	---	---	---	---	---	---	---	---	---

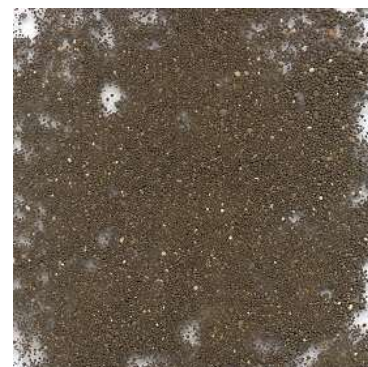
Performance*

Granule dispersal: 4-5 days

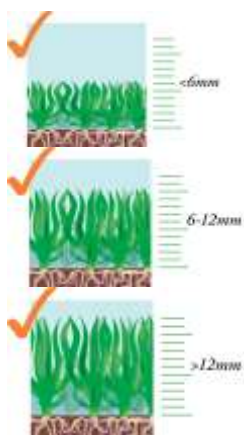
Turf response: 7 days

Longevity: 6 weeks

* depending on environmental factors



New packaging 2013



Product characteristics

Bag size: 20kg
Application Rate: 7-11g/m²
Bag coverage: 1,818-2,857m²
Particle size: 0.7-2.0mm
Granule count: 1,900 granules/g

Nutrient levels applied (kg/ha)

7g/m ²					11 g/m ²				
MgO	Cu	Fe	Mn	Zn	MgO	Cu	Fe	Mn	Zn
13.9	0.4	5.6	2.1	0.7	21.9	0.6	8.8	3.3	1.1

Directions for use

- Apply to dry foliage and irrigate after 1-2 days if no rain has fallen.
- Irrigation will aid dispersion and minimize any risk of mower pick-up on close mown surfaces.
- Avoid applications during frosty or drought conditions.
- Watering-in after application will minimize foot printing risk.
- If spilt on paving slabs, concrete, clothes etc. brush off immediately, as product may cause discolouration.
- Delay verti-cutting and/or grooming for 3 days after application to allow the granules to disperse.
- The treatment can be applied at six week intervals

Storage

Keep away from heat and sources of ignition. Keep away from food, drink and animal feeding stuffs. For quality reasons: Keep out of reach of direct sunlight, store under dry conditions, partly used bags should be closed well. Keep at temperatures between 0°C and 40°C.

Health & Safety

A Material Safety Data Sheet is available on request.

Guaranteed analysis

19.9% MAGNESIUM OXIDE (MgO)
12.0% magnesium (Mg)
19.71% SULPHUR TRIOXIDE TOTAL (SO₃)
7.9% sulphur total (S)
0.5% Copper total (Cu)
8.0% Iron total (Fe)
6.0% Iron (Fe) water soluble
3.0% Manganese total (Mn)
1.2% water soluble (Fe)
1.0% Zinc total (Zn)
1.0% water soluble

Spreader Settings

Spreader type	Application method	Cone setting	Spreader width (m)	Application rate (g/m ²)		
				5	10	15
Rotary Spreader SR-2000 or Accupro 2000	1 x pass	7	4.3	H	1 ½	K ½
	2 x pass	7	4.3	G ½	H	I
Drop Spreader SS-2	1 x pass	n/a	0.91	2	2 ¾	3 ¼
	2 x pass	n/a	0.91	1 ¼	2	2 ¼

Everris Limited

Epsilon House, West Road, Ipswich IP3 9FJ
T +44 (0)844 8094470 F +44 (0)1473 237128
E prof.sales@everris.com W www.everris.co.uk



Everris International B.V. is certified according to ISO 9001, ISO 14001 and GHSAS 18001.

®/TM Trade Marks of Everris International © Copyrights Everris.

