

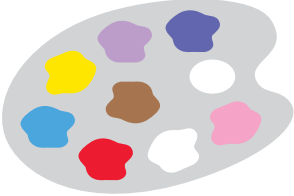
Pro Flora 16 - Coastal



Birdsfoot Trefoil
(*Lotus corniculatus*)

Many of our coastal areas are under threat from the sea and the activities of humans. **Pro Flora 16** provides a solution for land managers, either restoring areas near the coast or improving areas of poor quality land. Regenerating these areas can also help with erosion control and improve biodiversity, providing habitats for coastal-dwelling insects and invertebrate species. With the careful selection of location, this mix also provides an opportunity for coastal golf courses to create habitats and improve biodiversity.

Colour palette:



Jan	Feb	Mar	Apr	May	Jun	Jul	Aug	Sep	Oct	Nov	Dec

Flower height: **5cm to 1.2m**
Sowing rate: **5g/m²**

20% Wild Flowers

- 5% **Birdsfoot Trefoil**
(*Lotus corniculatus*)
- 1% **Bladder Campion**
(*Silene vulgaris*)
- 15% **Black Knapweed**
(*Centaurea nigra*)
- 0.5% **Catsear**
(*Hypochaeris radicata*)
- 1% **Common St John's Wort**
(*Hypericum perforatum*)
- 1% **Evening Primrose**
(*Oenothera biennis*)
- 2% **Greater Knapweed**
(*Centaurea scabiosa*)
- 7.5% **Kidney Vetch**
(*Anthyllis vulneraria*)
- 3% **Lady's Bedstraw**
(*Galium verum*)
- 15% **Ox-Eye Daisy**
(*Leucanthemum vulgare*)
- 0.5% **Red Clover**
(*Trifolium pratensis*)
- 10% **Ribwort Plantain**
(*Plantago lanceolata*)
- 18% **Selfheal**
(*Prunella vulgaris*)
- 7% **Sheeps Sorrel**
(*Rumex acetosella*)
- 2.5% **Viper's Bugloss**
(*Echium vulgare*)
- 5% **Wild Carrot**
(*Daucus carota*)
- 6% **White Campion**
(*Silene alba*)

80% Grasses

- 19% **Crested Dogtail**
(*Cynosurus risticatus*)
- 6% **Creeping Bent**
(*Agrostis stolonifera*)
- 18% **Sheeps Fescue**
(*Festuca ovina*)
- 25% **Slender Red Fescue**
(*Festuca rubra litoralis*)
- 12% **Small Timothy**
(*Phleum bertolonii*)
- 10% **Saltmarsh Grass**
(*Puccinellia maritima*)
- 10% **Smooth Stalked Meadow Grass**
(*Poa pratensis*)

