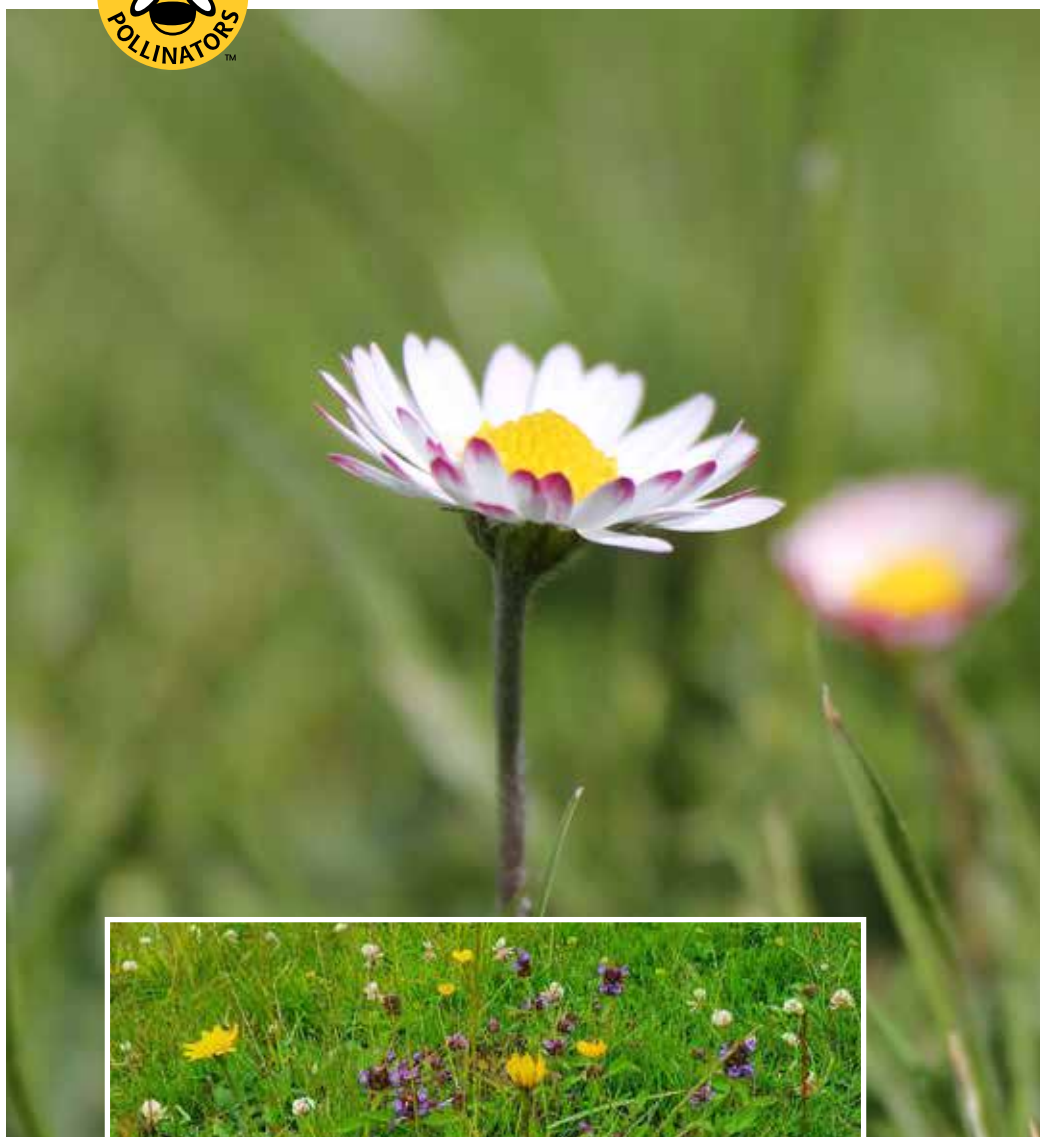


Pro Flora 13 - Species Rich Lawn & Landscape

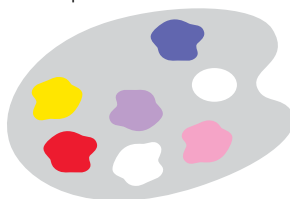


Selfheal
(*Prunella vulgaris*)

With demand for improved biodiversity on all major landscape projects, increasing the species count in what can be the largest soft landscaped surface of the scheme can sometimes be overlooked.

Pro Flora 13 is suited to a varied management regime in terms of cutting height and frequency. This flexibility allows mowing every couple of weeks at 75-100mm in a more intensively managed area, right through to a conventionally managed, species rich, grassland receiving just one or two cuts a year. The greater amount of time between cuts, the greater the number of species will flower providing additional benefits to pollinating insects.

Colour palette:



Jan	Feb	Mar	Apr	May	Jun	Jul	Aug	Sep	Oct	Nov	Dec

Flowering Period

Flower height: **5cm to 1m**

Sowing rate: **5-10 g/m²**

20% Wild Flowers

- 2% **Autumn Hawkbit**
(*Leontodon autumnalis*)
- 3% **Black Medick**
(*Medicago lupulina*)
- 2% **Birdsfoot Trefoil**
(*Lotus corniculatus*)
- 7% **Bulbous Buttercup**
(*Ranunculus bulbosus*)
- 2% **Common Cat's-ear**
(*Hypochaeris radicata*)
- 1% **Common Mouse-ear**
(*Cerastium fontanum*)
- 1% **Cowslip**
(*Primula veris*)
- 1% **Field Pansy**
(*Viola arvensis*)
- 7% **Hoary Plantain**
(*Plantago media*)
- 8% **Kidney Vetch**
(*Anthyllis vulneraria*)
- 11% **Lady's Bedstraw**
(*Galium verum*)
- 14% **Meadow Buttercup**
(*Ranunculus acris*)
- 2% **Native Red Clover**
(*Trifolium pratense*)
- 2% **Native White Clover**
(*Trifolium repens*)
- 9% **Oxeye Daisy**
(*Leucanthemum vulgare*)
- 2% **Rough Hawkbit**
(*Leontodon hispidus*)
- 14% **Selfheal**
(*Prunella vulgaris*)
- 5% **Sorrel**
(*Rumex acetosa*)
- 7% **Yarrow**
(*Achillea millefolium*)

80% Grasses

- 4% **Browntop Bentgrass**
(*Agrostis capillaris*)
- 27% **Crested Dogtail**
(*Cynosurus cristatus*)
- 25% **Sheep's Fescue**
(*Festuca ovina*)
- 20% **Slender Creeping Red Fescue**
(*Festuca rubra litoralis*)
- 5% **Small Timothy**
(*Pheleum bertolonii*)
- 15% **Smooth Stalked Meadowgrass**
(*Poa pratensis*)
- 4% **Sweet Vernal**
(*Anthoxanthum odoratum*)