

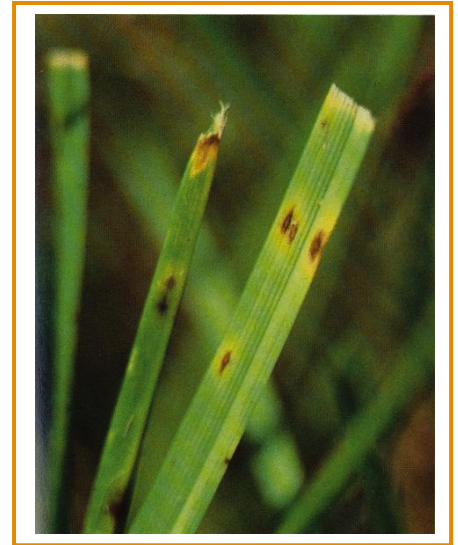
Leaf Spot/Melting Out

Background

- Occurs during warmer seasons, high humidity, drought conditions, wet foliage, high shade levels, conditions typical of a stadium environment.
- Moves across the surface on water film.
- Mainly prevalent on Lolium spp, but can also be found on Festuca spp and Agrostis spp.
- Leaf Spot phase does not usually damage plants significantly.
- Crown infected plants turn yellow and die as temperatures increase; this is referred to as the melting-out phase of the disease.

Approach

1. Minimise surface wetness.
2. Increase airflow.
3. Balanced nutrition promotes harder turf more resistant to disease attack.
4. Remove excess thatch in an integrated programme.
5. Use resistant cultivars.
6. Raise height of cut to avoid stress if less than 50mm.
7. Use fungicides as part of an IPM programme and be aware of causing resistance to one chemical group by its regular use.



i-Turf Solutions

| Product type | Why | Everris solution |
|-------------------------|--------------------------|-------------------------------|
| Penetrant wetting agent | Remove surface moisture. | H ₂ Pro Maximise |
| Approved fungicide | Control disease. | Heritage Maxx Medallion TL |

For solutions and treatments of Leaf Spot, please visit the dedicated solution pages at www.everris.com